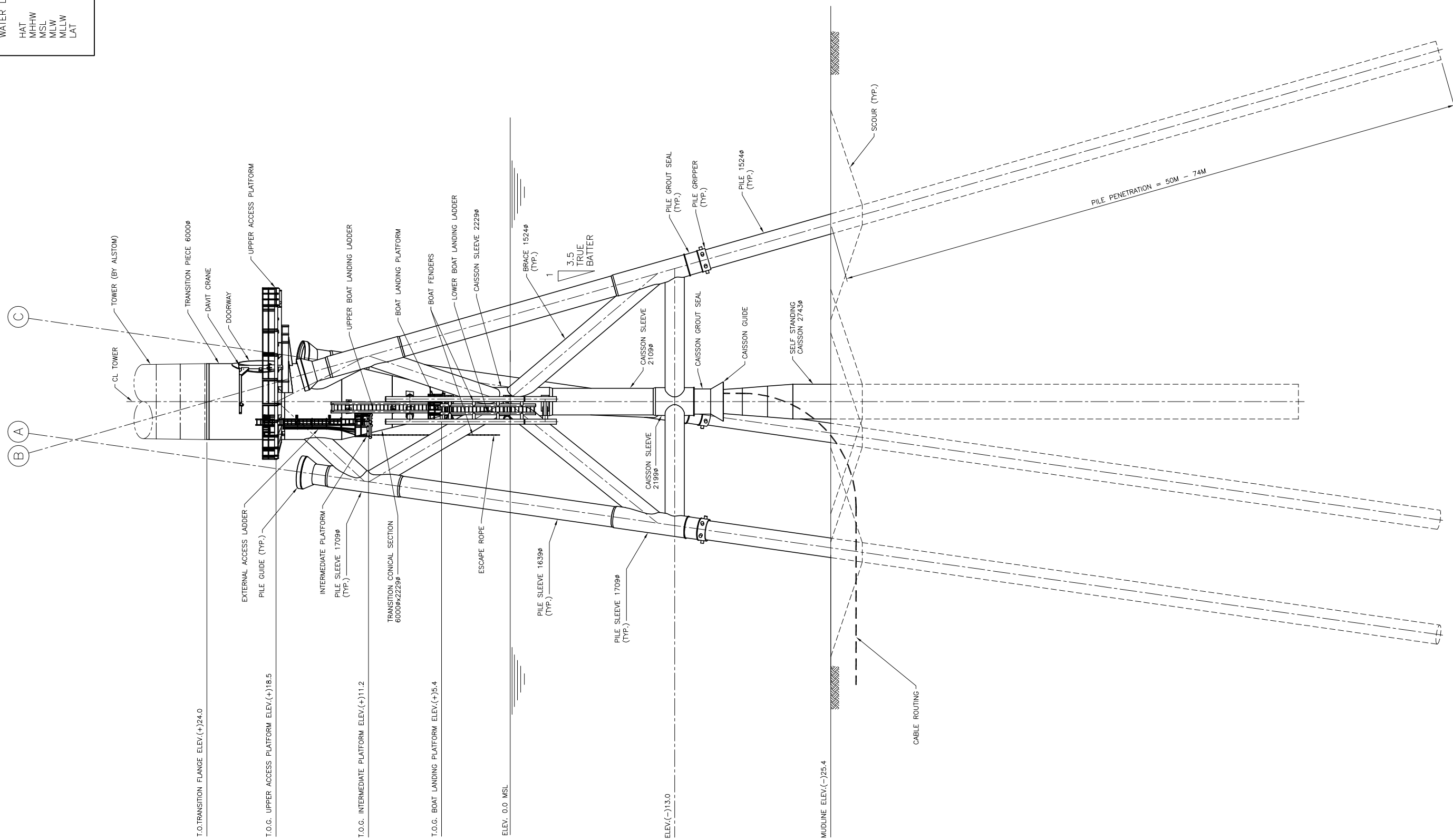


Appendix D-1 – Typical Construction Drawings




WATER LEVELS (ESTIMATED)	
HAT	+0.79M
MHHW	+0.55M
MSL	ZERO
MLW	-0.40M
MLLW	-0.51M
LAT	-0.67M

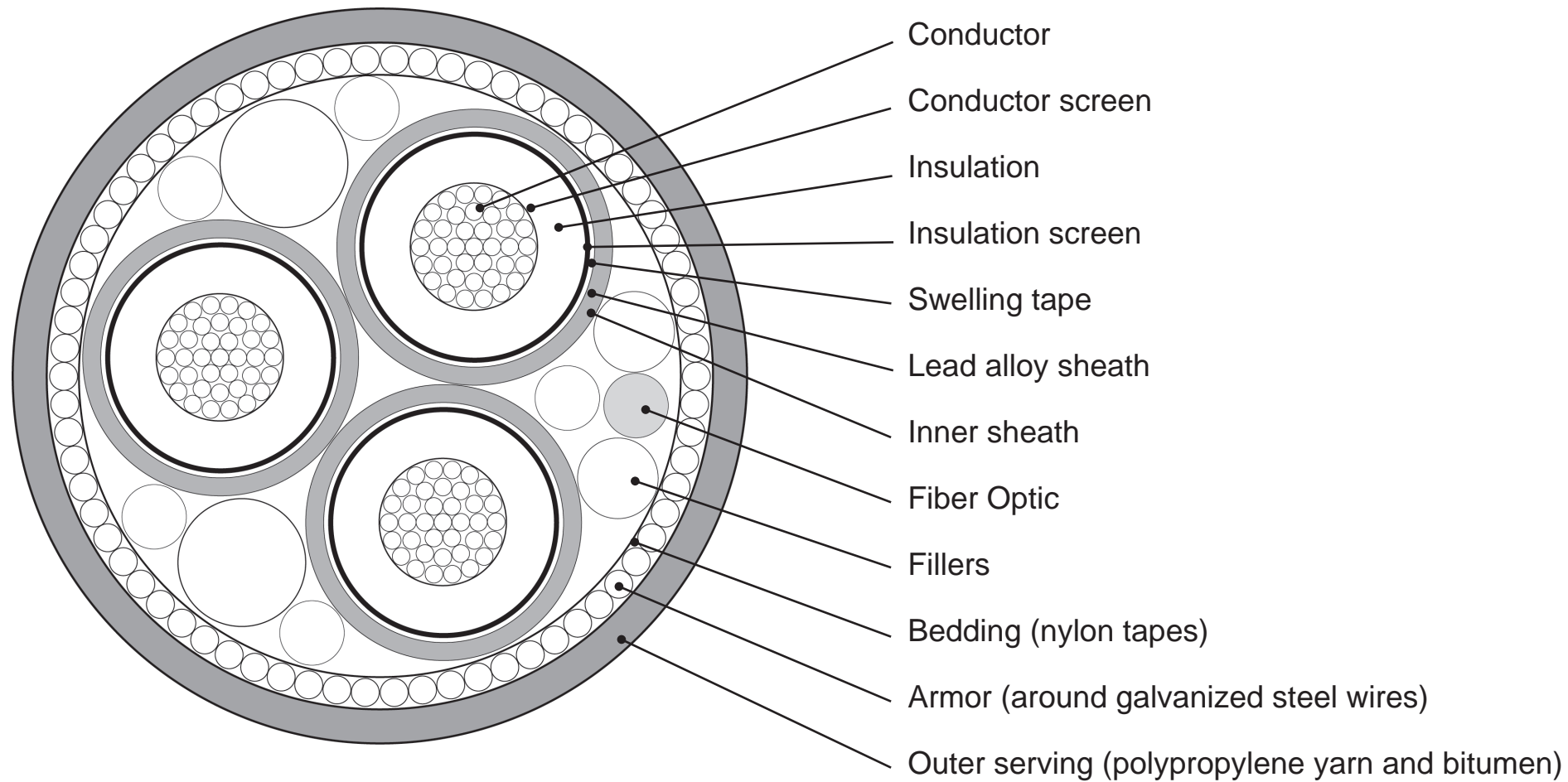


ASSEMBLY ELEVATION LOOKING SOUTH
SCALE: 1:150

PRELIMINARY
NOT FOR CONSTRUCTION

Appendix D-1
Figure 1

REV	3	ISSUED FOR SUBMISSION	20FEB14	FJF	KPD	HKM	SCALE 1:150 FOR 420mm x 270mm DWG ONLY		PROJECT NAME	VIRGINIA OFFSHORE WIND TECHNOLOGY ADVANCEMENT PROJECT (VOWTAP)	REV	3
	2	ISSUED FOR SUBMISSION	5FEB14	FJF	KPD	HKM			DRAWING TITLE	ASSEMBLY ELEVATION	DRAWING NO.	DVP-KEI-WT1.2-DWG-0030
	1	ISSUED FOR SUBMISSION	16JAN14	FJF	KPD	HKM						
		REVISIONS	DATE	DRN	CKD	APPD						



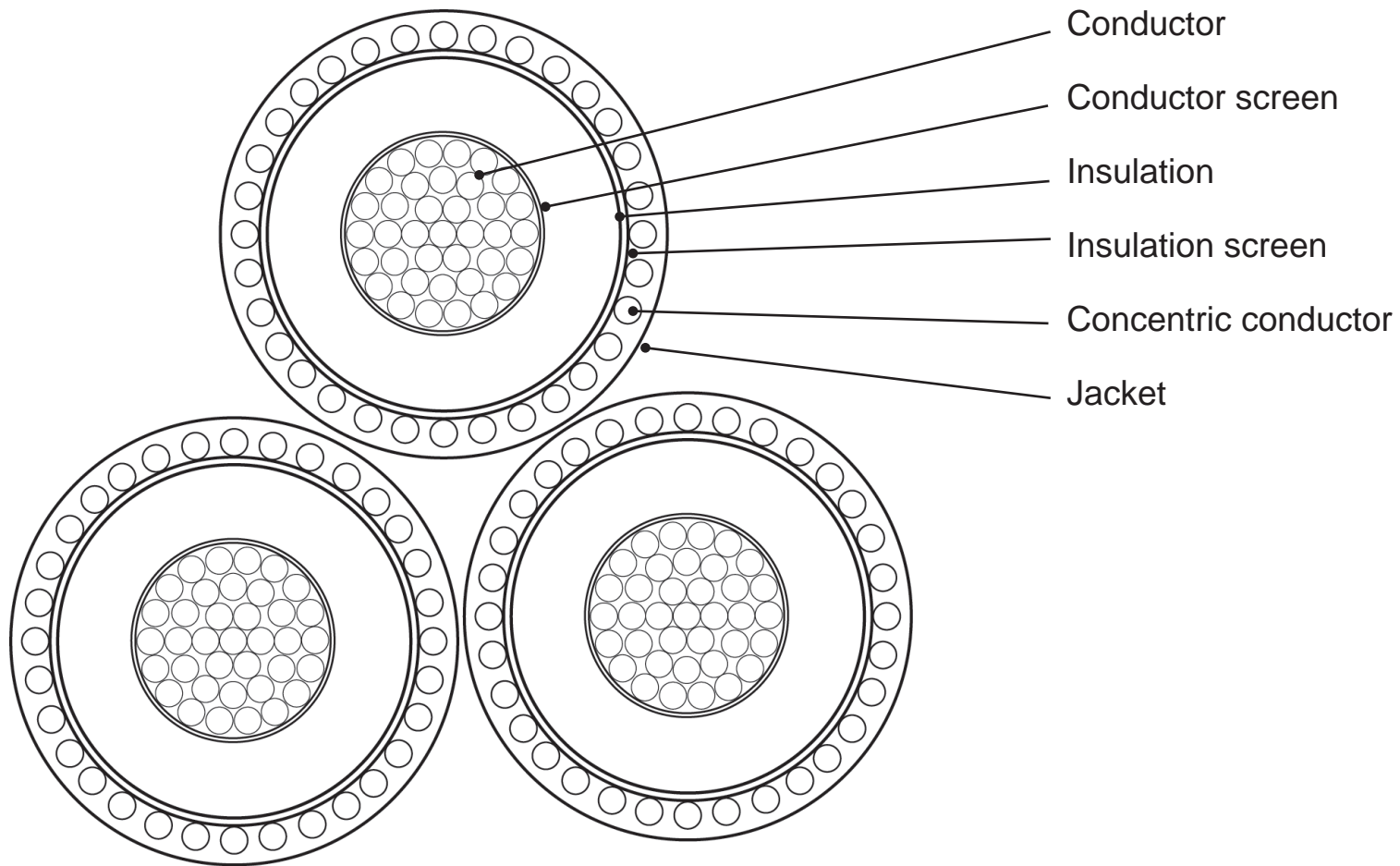
TETRA TECH

Typical 34.5-kV Submarine Transmission Cable



Virginia Offshore Wind Technology Advancement Project
Research Activities Plan

Appendix D-1, Figure 2



TETRA TECH

Typical 34.5-kV Onshore Interconnection Cable



Virginia Offshore Wind Technology Advancement Project
Research Activities Plan

Appendix D-1, Figure 3