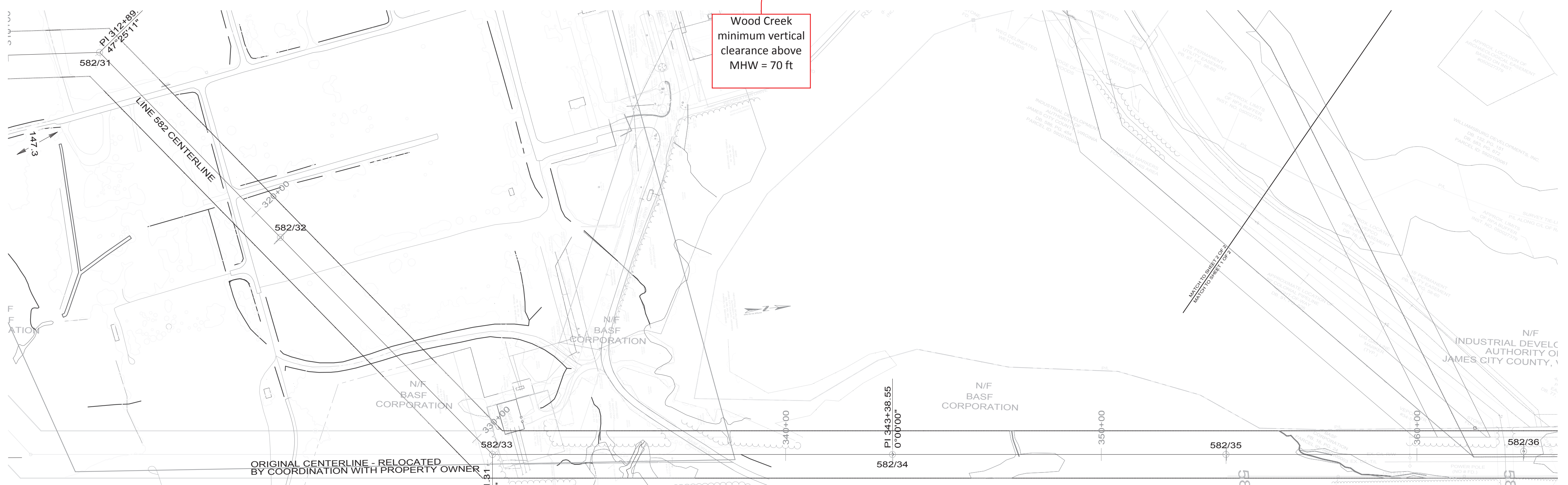
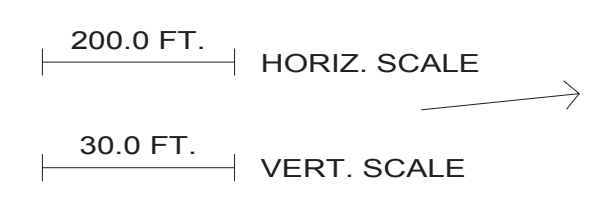


SPAN	RULING SPAN (FEET)	CONDUCTOR	TENSION (LBS)
582/29 - 582/31	839	DNO 9809	60°F INITIAL 3431 MAXIMUM 7750
582/29 - 582/31	850	DNO 9809	60°F INITIAL 3408 MAXIMUM 7750
582/29 - 582/31	844	1351 ACSR 46/7 "DIPPER"	60°F INITIAL 7847 MAXIMUM 14500
582/31 - 582/33	969	DNO 9809	60°F INITIAL 3215 MAXIMUM 7750
582/31 - 582/33	970	DNO 9809	60°F INITIAL 3215 MAXIMUM 7750
582/31 - 582/33	970	1351 ACSR 46/7 "DIPPER"	60°F INITIAL 7664 MAXIMUM 14500

'X' - S = NUMBER OF STATIC DAMPERS
'X' - C = NUMBER OF CONDUCTOR DAMPERS

- EROSION & SEDIMENTATION NOTES:
- EROSION AND SEDIMENTATION CONTROL MEASURES SHALL BE IN ACCORDANCE WITH THE COMPANY'S GENERAL CONSTRUCTION PROVISIONS AND GENERAL EROSION AND SEDIMENTATION CONTROL PLAN.
 - EROSION & SEDIMENTATION MEASURES TAKEN AT EACH STRUCTURE SHALL BE SPECIFIED BY THE PROJECT COORDINATOR AND IMPLEMENTED PRIOR TO EARTH DISTURBING ACTIVITIES.
 - AT A MINIMUM, AREAS MARKED ON THE PLAN AND PROFILE DRAWING BY SHALL BE PROTECTED AGAINST EROSION WHEN ANY EARTH DISTURBING ACTIVITIES OCCUR UPSTREAM OF THESE AREAS.

PROFILE IS ALONG SURVEY LINE
20' RIGHT -----
20' LEFT -----



NO.	DATE	CHECKED BY	APPROVED	DESCRIPTION

(N.E.S.C.) 2007 EDITION DESIGN SPECIFICATIONS	LOADING		N.E.S.C. CLEARANCES				RULING SPAN	CONDUCTOR	INSTALLED SIZE	STRINGING TENSION @ 60°F	MAXIMUM TENSION	SHIELD WIRE	INSTALLED SIZE	STRINGING TENSION @ 60°F	MAXIMUM TENSION	ELECTRONIC PLS CADD DATA	K:\WORK\TRANS\05\058201\058201.XYZ
	ICE	WIND	A°F	WATER	GROUND	ROAD	RAILROAD										
1/2"	4 LBS.	0A°	29.9 FT	27.9 FT	27.9 FT	35.9 FT	SEE TABLE										

Dominion
701 E. Cary Street
Richmond, VA 23219

**500 KV TRANSMISSION LINE 582
SURRY - SKIFFES CREEK
582/31 - 582/35**

DRAWN	NAME	DATE	SCALE	SHEET NO.
KAK	KAK	4/1/14	1" = 30' V	8 OF 16
CHECKED	EK	4/1/14	1" = 200' H	
INSPECTED				

APPROVED	PROJECT NO.	W.O. NO.	B/M NO.	DRAWING NO.
	99-2245	2611		1-582-1-51