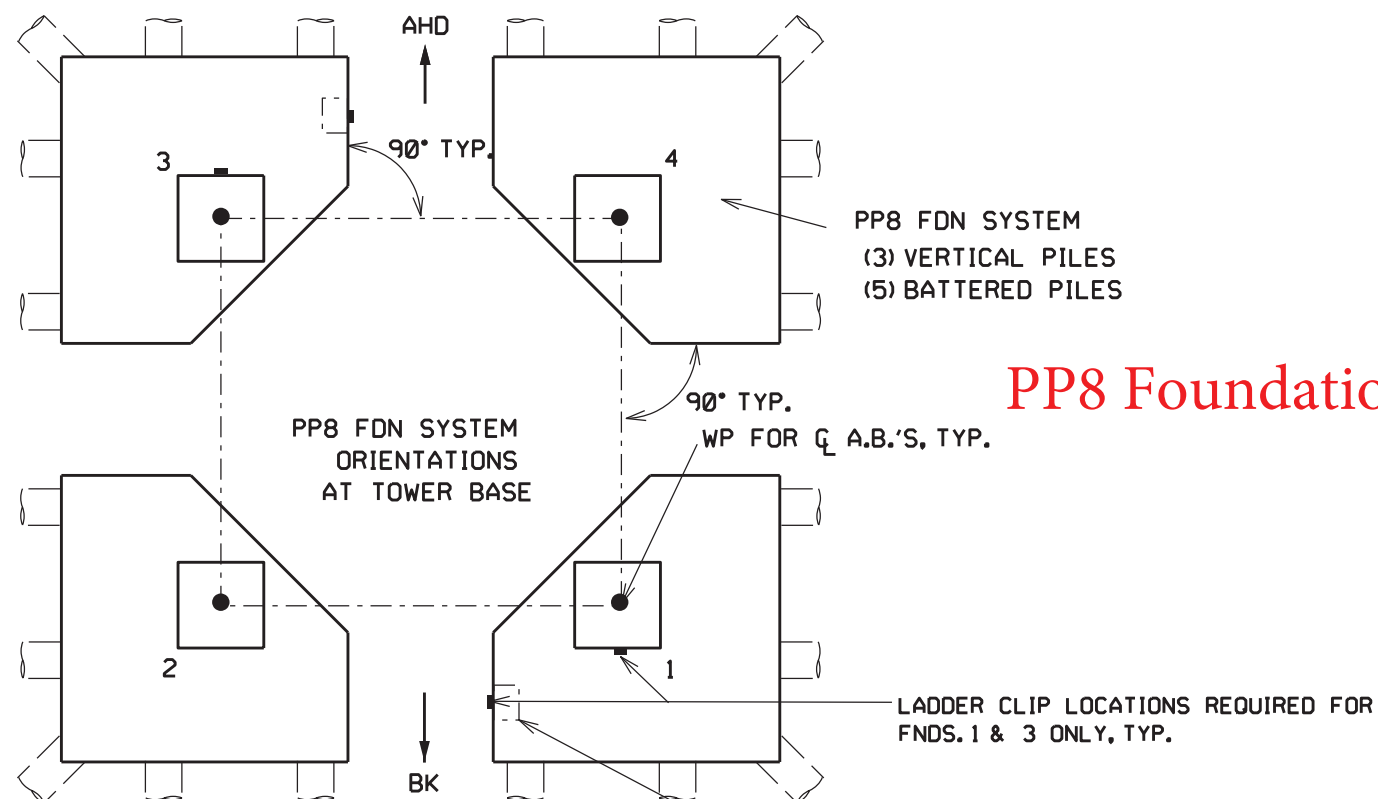
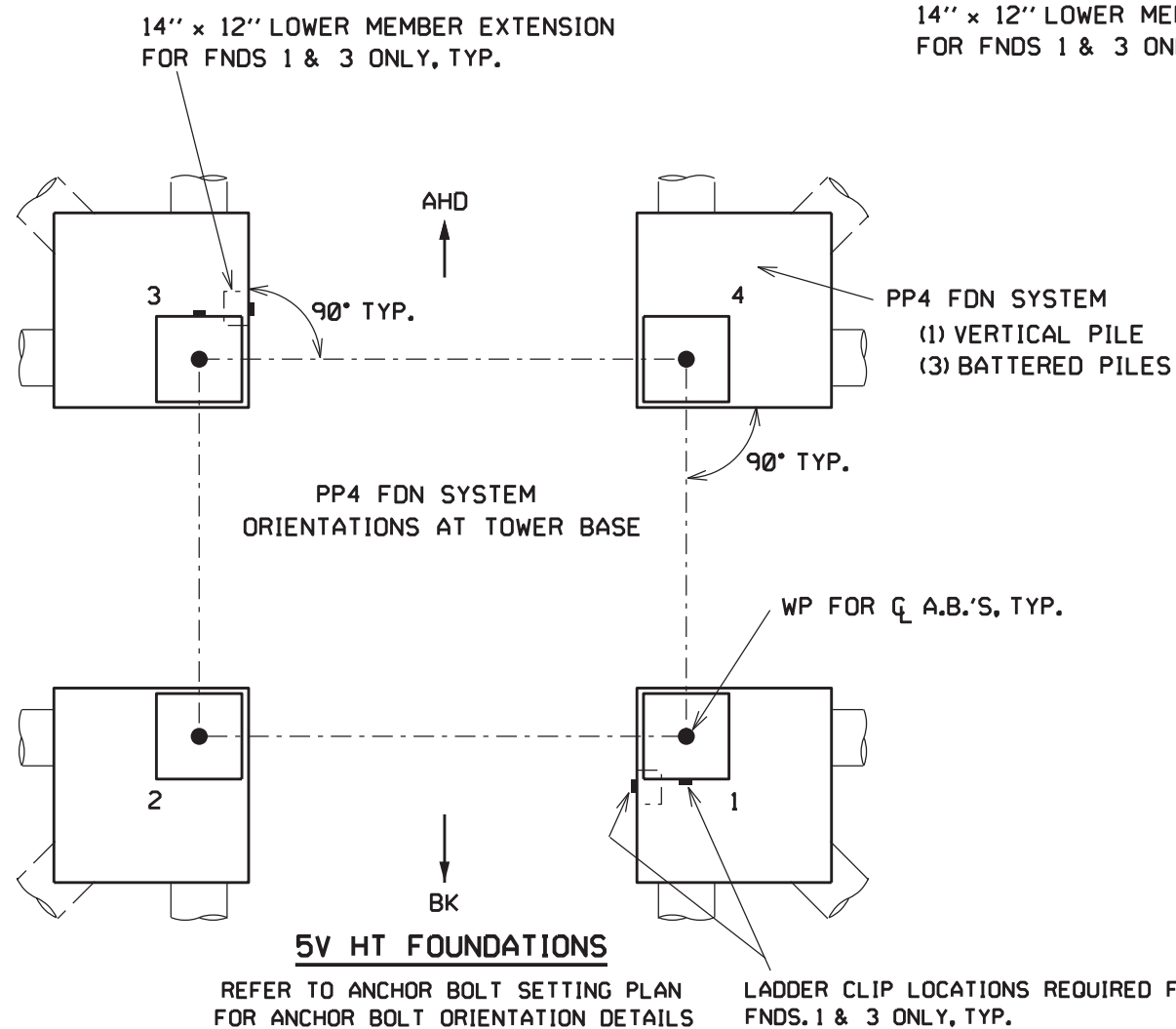


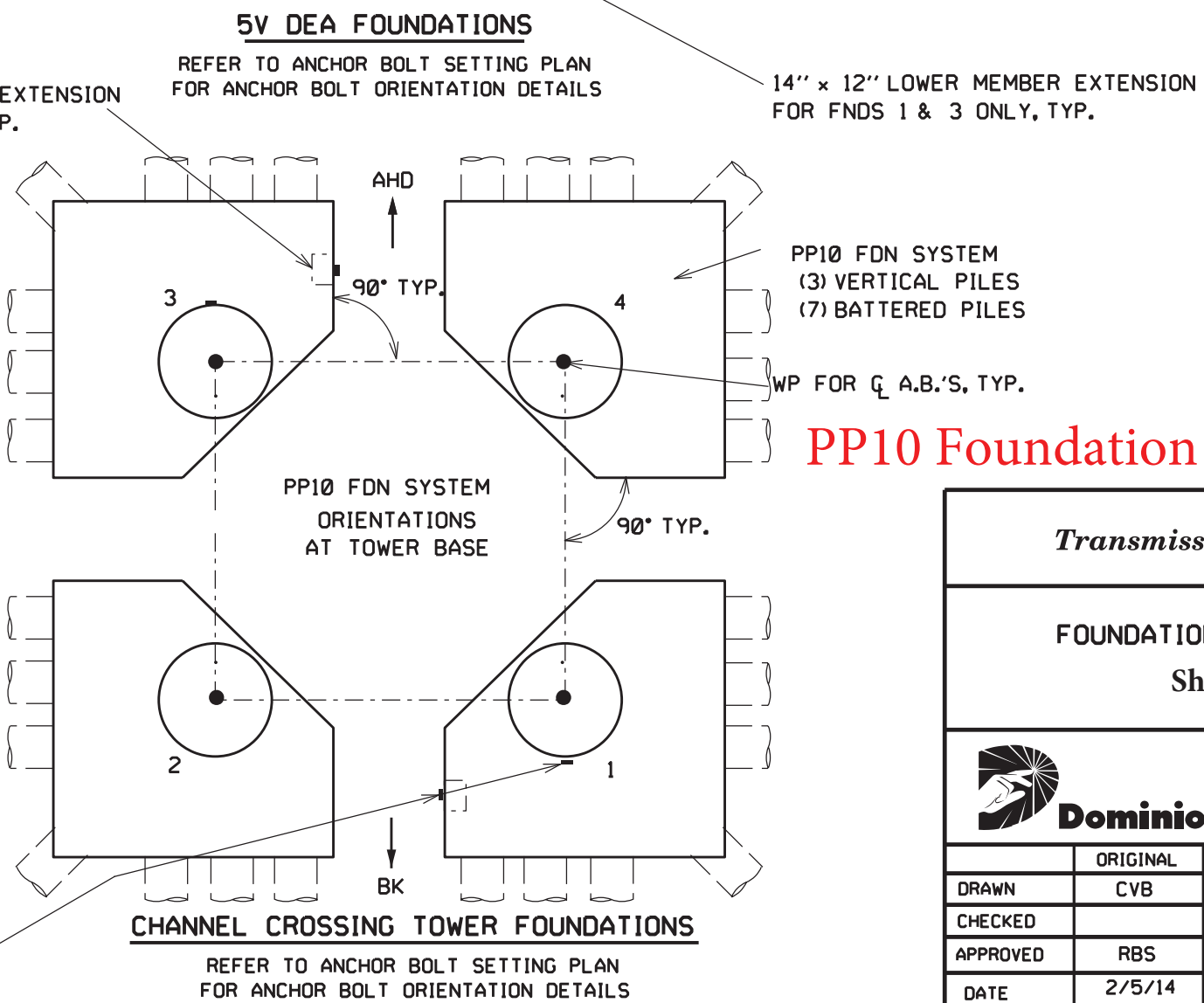
NOTE:

1. LADDER CLIPS TO BE INSTALLED ON FNDS.1 & 3 ONLY.
2. 14" X 12" REINFORCED CONCRETE MEMBER EXTENSION IS REQUIRED ON FNDS.1 & 3 WHERE LADDER CLIPS ARE SPECIFIED.
3. ON A SPECIFIED FOUNDATION, TWO LADDER CLIPS WILL BE REQUIRED ON THE PEDESTAL, CAP AND THE 14" X 12" LOWER MEMBER EXTENSION. A TOTAL OF SIX LADDER CLIPS WILL BE REQUIRED ON A SPECIFIED FOUNDATION.
4. FOR LADDER CLIP INSERT INSTALLATION DETAILS, SEE DWGS.1-582-1-29 & 1-582-1-63. FOR LADDER CLIP INSTALLATION DETAILS, SEE DWG.1-582-1-62.

PP4 Foundation




PP8 Foundation



PP10 Foundation

1	10/23/14
RBS	RBS
ADDED LADDER CLIP LOCATIONS. ADDED 14" X 12" LOWER MEM. EXT. TO FNDS.1 & 3.	

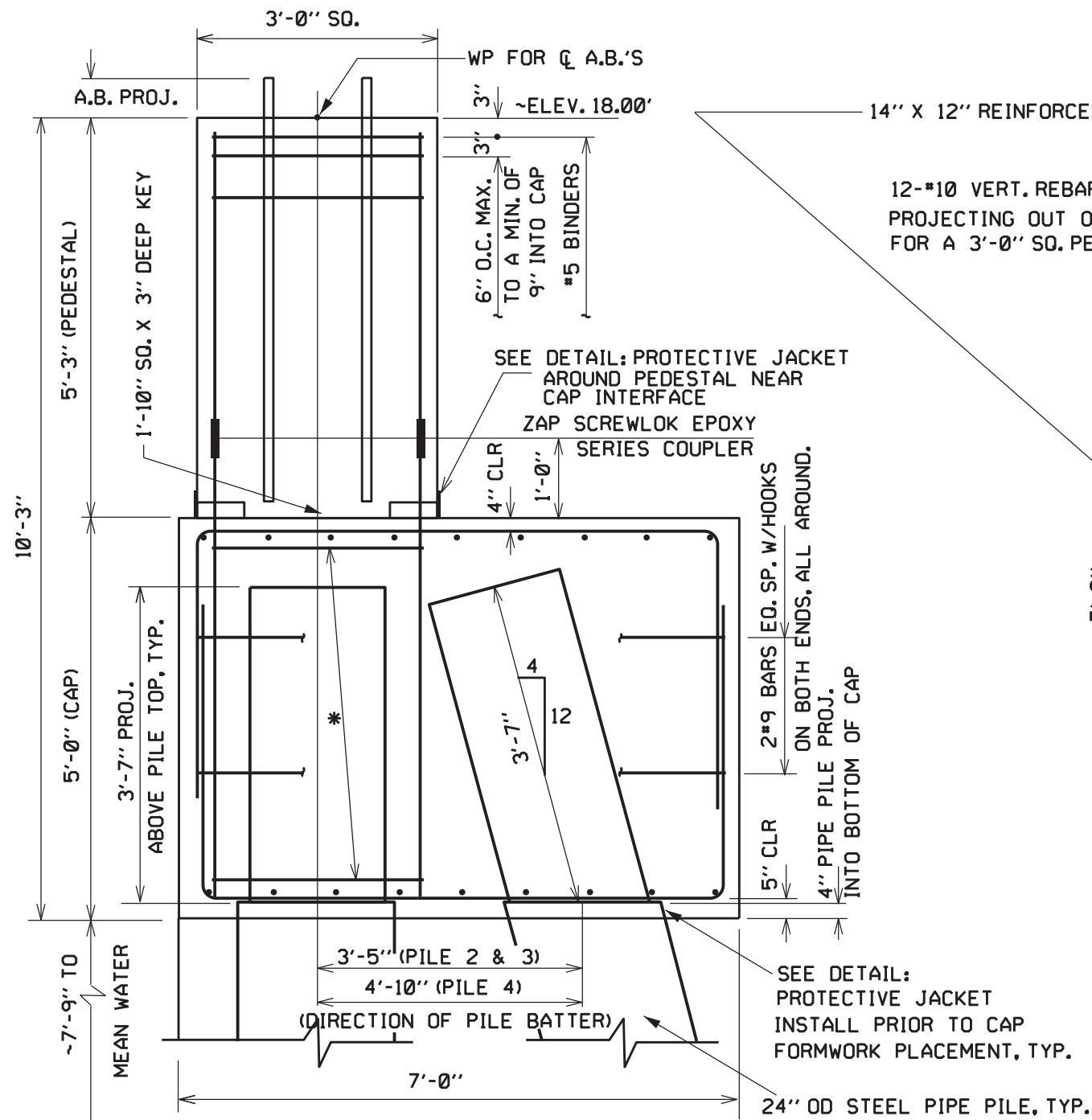
<i>Transmission Construction</i>			
FOUNDATION ORIENTATIONS			
Sheet 1 of 4			
		Dominion 701 E. Cary Street Richmond, VA 23219	
	ORIGINAL	REVISION	DRAWING NO.
DRAWN	CVB		1-582-1-55
CHECKED			
APPROVED	RBS		
DATE	2/5/14		CAD NO. 05820100055

\$SYTIME\$

\$DGNSPEC\$

TES11X17

PP4 Foundation System (10 Towers)

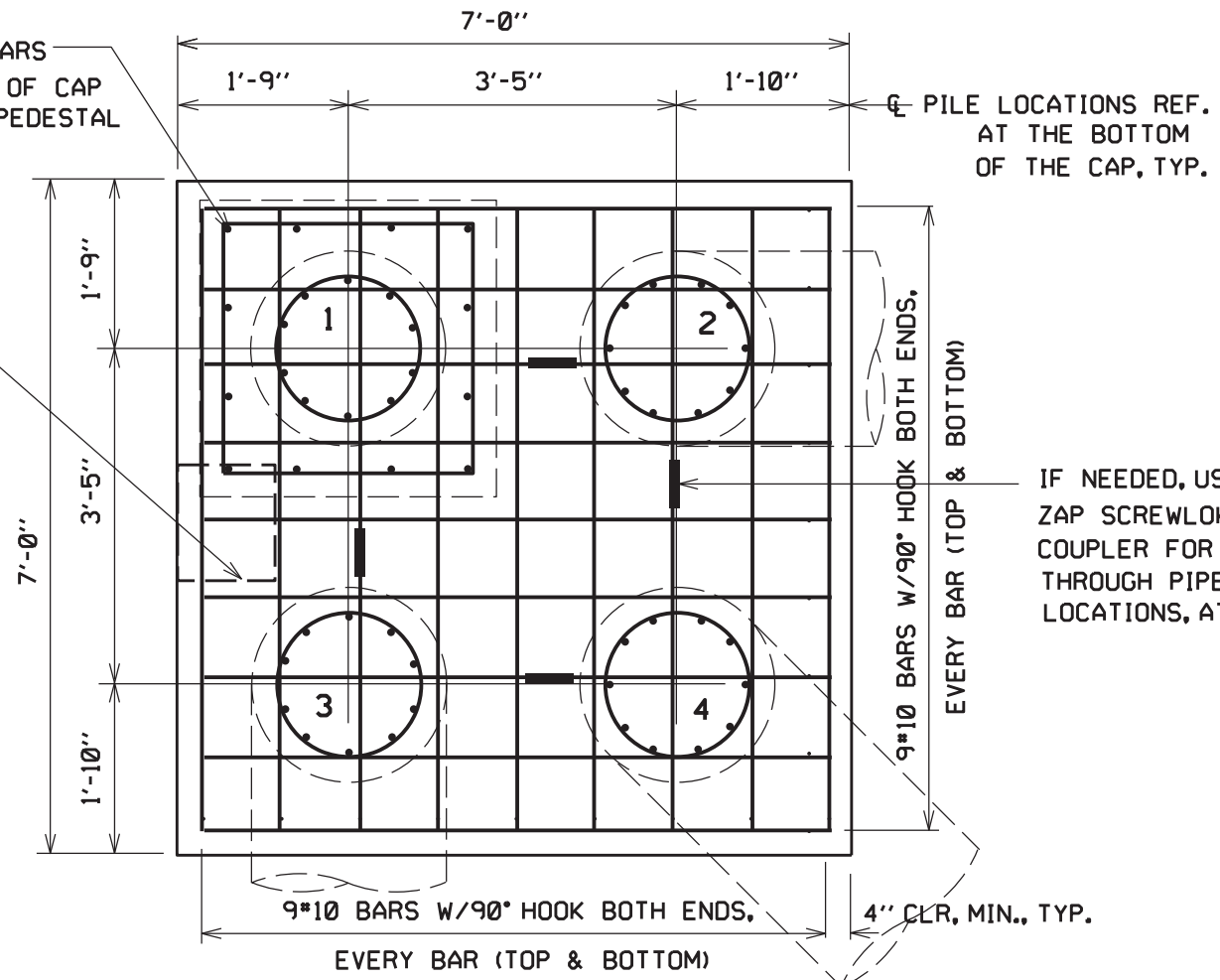


ELEVATION

* USE #5 BINDERS AS REQ'D TO MAINTAIN VERTICAL REBAR SPACING IN CAP

14" X 12" REINFORCED CONCRETE MEMBER EXTENSION REQUIRED FOR FNDS. 1 & 3 ONLY. SEE DWGS. 1-582-1-29, 55 & 63.

12-#10 VERT. REBARS PROJECTING OUT OF CAP FOR A 3'-0" SQ. PEDESTAL



PLAN


NOTE

1. VERTICAL REBARS IN PEDESTAL & EXTENDING INTO CAP TO BE HOT DIP GALV.
2. CAP REBARS TO BE EPOXY COATED.
3. ALL BINDERS TO BE EPOXY COATED.

SEE DWG 1-582-1-55 FOR FDN SYSTEM ORIENTATION AT EACH TOWER LEG.

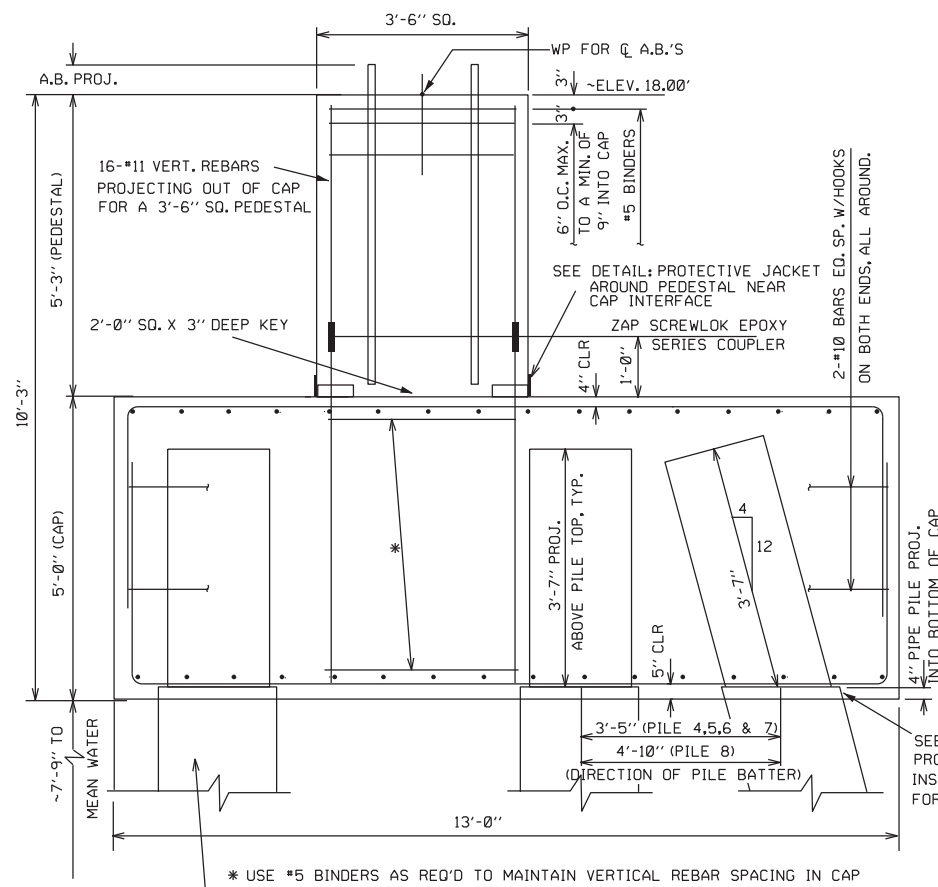
NO.	DATE	1 9-26-14		2 10-23-14		
		CHKD	APPD	RBS	RBS	RBS
DESCRIPTION			PEDESTAL VERT. REBAR CHG'D TO #10 VS #9. CAP HORZ. REBAR CHG'D TO #10 VS #9.		ADDED LOWER MEM. EXT. REQUIREMENT FOR FNDS. 1 & 3.	

BY:	CVB
APD:	RBS
DATE:	2/4/14
W.O.:	
IRE:	99-2245

Transmission Construction	 Dominion	Dominion 701 E. Cary Street Richmond, VA 23219
		5V HT TOWER PP4 FDN SYSTEM PER LEG
		DRAWING NUMBER 1-582-1-23 Sheet 2 of 4

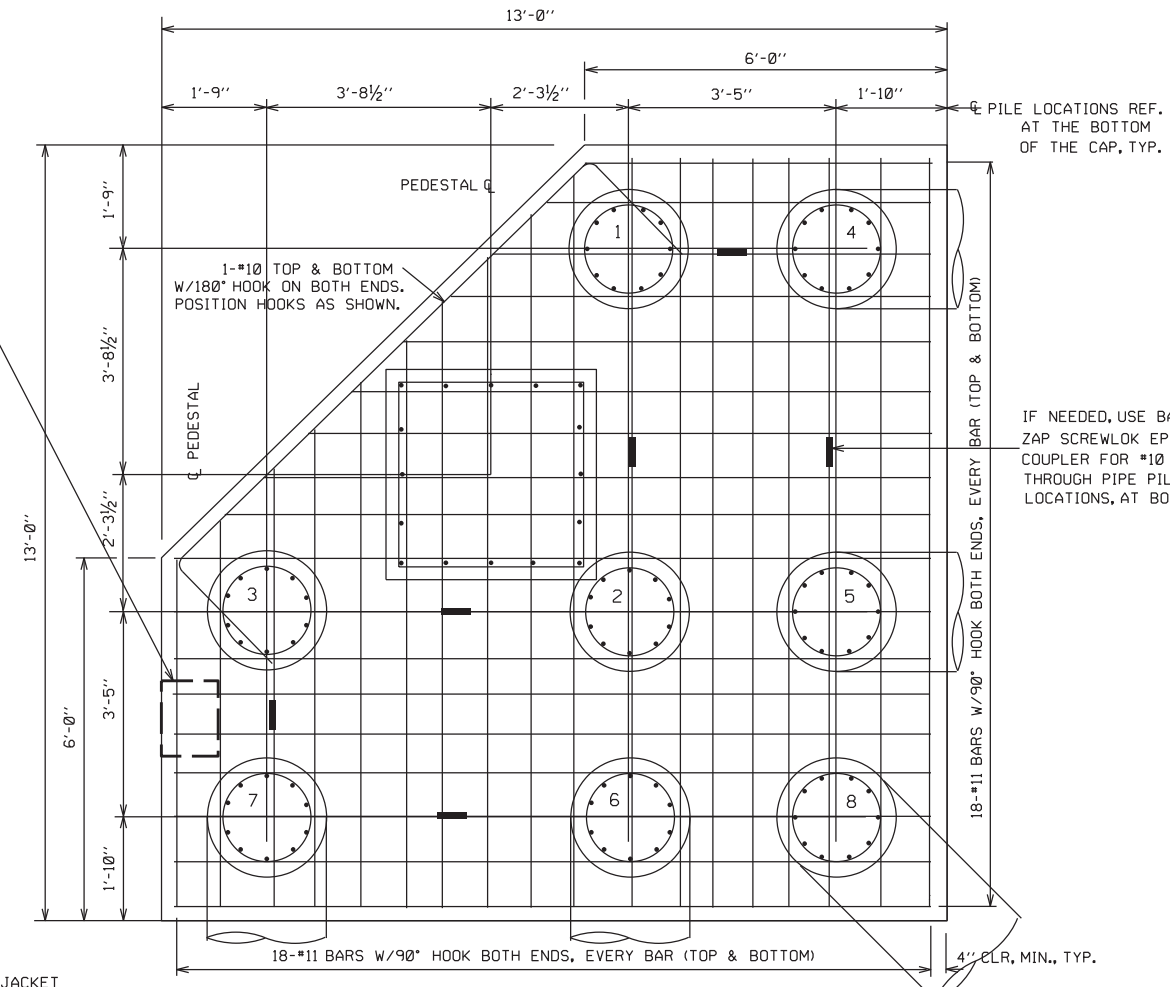
PP8 Foundation System (3 Towers)

14" X 12" REINFORCED CONCRETE MEMBER EXTENSION REQUIRED FOR FND. 1 & 3 ONLY. SEE DWGS. 1-582-1-29, 55 & 63.



ELEVATION

24" OD STEEL PIPE PILE, TYP.



PLAN

- NOTE
1. VERTICAL REBARS IN PEDESTAL & EXTENDING INTO CAP TO BE HOT DIP GALV.
 2. CAP REBARS TO BE EPOXY COATED.
 3. ALL BINDERS TO BE EPOXY COATED.

SEE DWG 1-582-1-55 FOR FDN SYSTEM ORIENTATION AT EACH TOWER LEG.



Dominion
701 E. Cary Street
Richmond, VA 23219

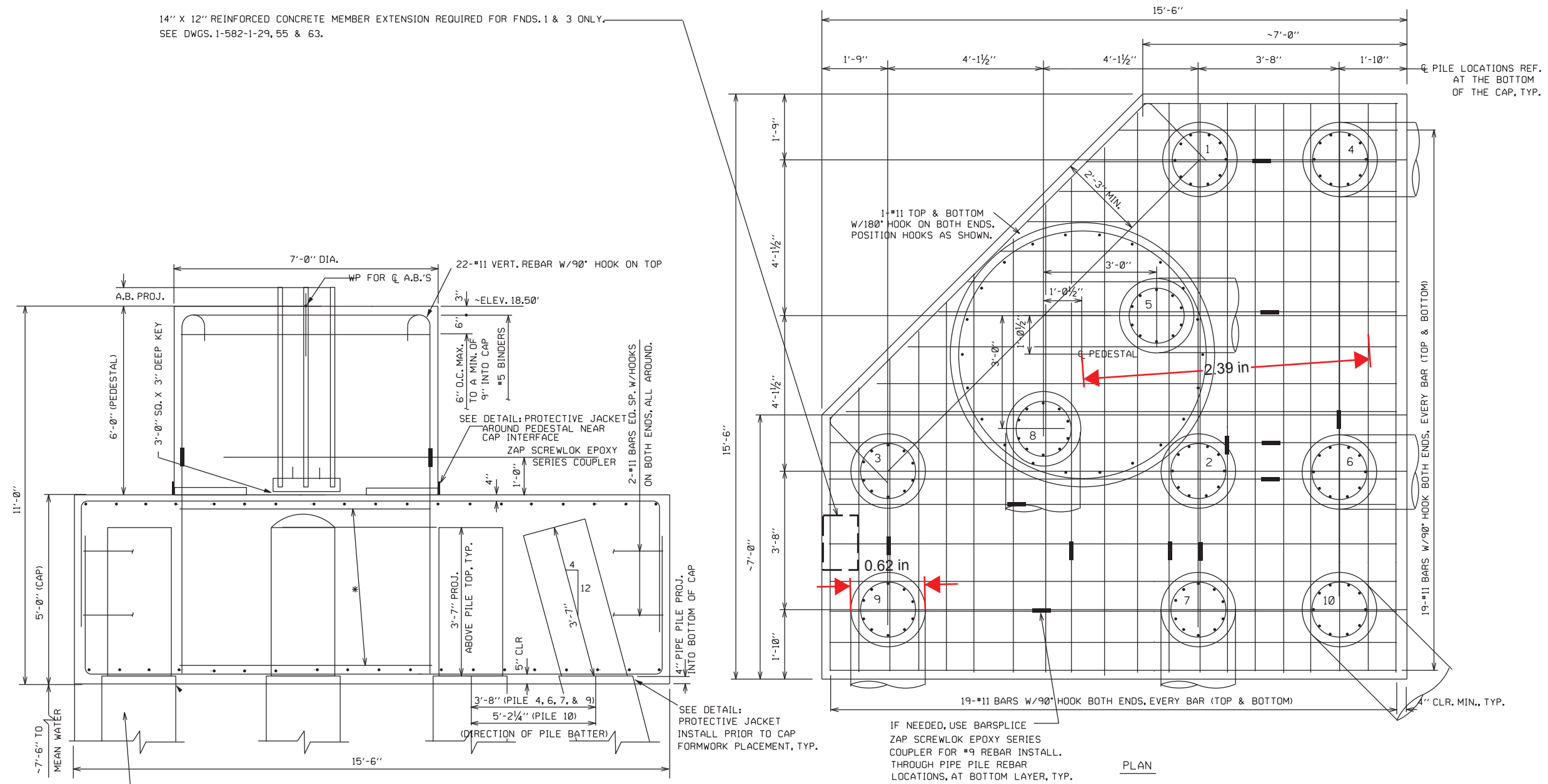
5V HA & DEA TOWER PP8 FDN SYSTEM PER LEG

NAME	DATE	PROJECT NO.	SHEET NO.
DRAWN CVB	2/5/14		Sheet 3 of 4
CHECKED		SCALE	
INSPECTED		1/2"=1'-0"	
CORRECT			REVISIONS
APPROVED RBS	2/5/14		
WORK ORDER	B/M NO.	DRAWING NO.	
		1-582-1-24	

REV	BY	DATE	DESCRIPTION
REV 1	RBS	9-26-14	PEDESTAL VERT. REBAR CHG'D TO #11 VS #10. CAP HORZ. REBAR CHG'D TO 18-#11 VS 16-#10.
REV 2	RBS	10-23-14	ADDED LOWER MEM. EXT. REQUIREMENT FOR FND. 1 & 3.

\$DGN\$PEC\$
 \$SYTIME\$

14" X 12" REINFORCED CONCRETE MEMBER EXTENSION REQUIRED FOR FND. 1 & 3 ONLY.
SEE DWGS. 1-582-1-29, 55 & 63.



* USE #5 BINDERS AS REQ'D TO MAINTAIN VERTICAL REBAR SPACING IN CAP
ELEVATION
24" OD STEEL PIPE PILE, TYP.

PLAN
IF NEEDED, USE BARSPLICE ZAP SCREWLOK EPOXY SERIES COUPLER FOR #9 REBAR INSTALL. THROUGH PIPE PILE REBAR LOCATIONS, AT BOTTOM LAYER, TYP.
NOTE
1. VERTICAL REBARS IN PEDESTAL & EXTENDING INTO CAP TO BE HOT DIP GALV.
2. CAP REBARS TO BE EPOXY COATED.
3. ALL BINDERS TO BE EPOXY COATED.

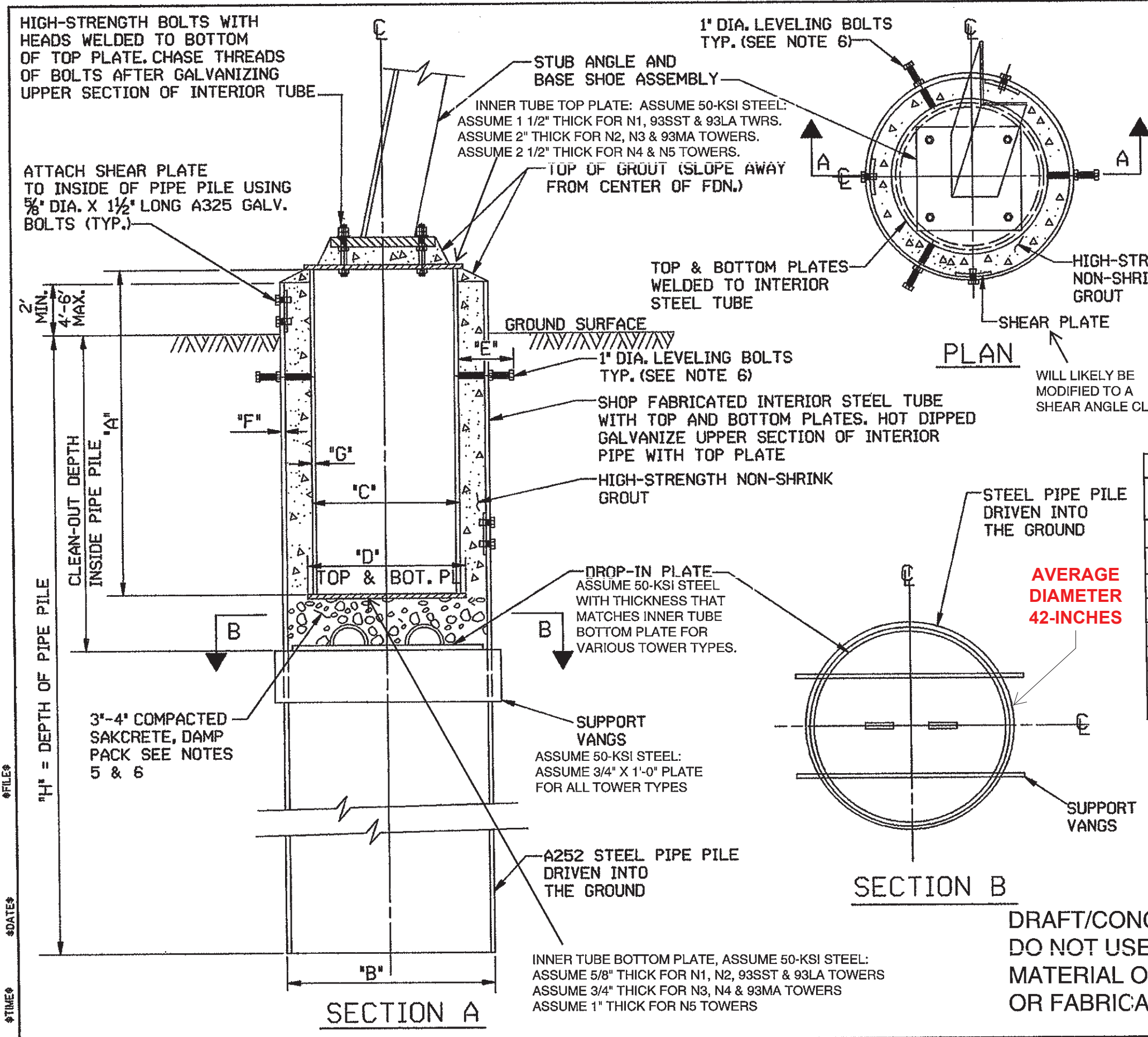
PP10 Foundation System - Channel Crossings (4 Towers)

SEE DWG 1-582-1-55 FOR FDN SYSTEM ORIENTATION AT EACH TOWER LEG.

	Dominion 701 E. Cary Street Richmond, VA 23219		
	CHANNEL CROSSING TOWER PPI0 FDN SYSTEM PER LEG		
DRAWN	NAME	DATE	PROJECT NO.
CHECKED	CVB	1/24/14	SCALE
INSPECTED			1/2"=1'-0"
REVISIONS			
CORRECT			
APPROVED	RBS		
WORK ORDER	B/M NO.	DRAWING NO.	
		1-582-1-26	

REV 1 RBS 9-26-14 PEDESTAL VERT. REBAR CHG'D TO 22-#11 VS 20-#11.	REV 2 RBS 10-23-14 ADDED LOWER MEM. EXT. REQUIREMENT FOR FND. 1 & 3.
--	---

Typical Pipe Pile Foundation Detail



- ### NOTES
1. DRIVE PIPE PILE TO REQUIRED DEPTH.
 2. PRE-EXCAVATE AS REQUIRED PRIOR TO PILE DRIVING TO PREVENT SOIL FROM ENTERING UPPER SECTION OF PIPE PILE.
 3. POSITION INTERIOR STEEL TUBE AT REQUIRED LOCATION AND ELEVATION.
 4. INSTALL BASE SHOE AND STUB ANGLE ASSEMBLY AND LEVEL AS REQUIRED WITH LEVELING NUTS.
 5. DAMP PACK APPROXIMATELY 3' TO 4' OF SAKCRETE OR EQUAL ABOVE THE DROP-IN PLATE TO PROVIDE A LEVEL SURFACE PRIOR TO THE INTERIOR STEEL TUBE INSTALLATION.
 6. POSITION AND ORIENT INTERIOR STEEL TUBE INSIDE THE PIPE PRIOR TO THE SET UP OF THE DAMP PACK SAKCRETE. POSITION INTERIOR STEEL TUBE WITH SPECIFIED LENGTH OF 1' DIA. LEVELING BOLTS AS NOTED BELOW (DIM 'E')

TABLE OF DIMENSIONS

TOWER	"A"	"B"	"C"	"D"	"E"	"F"	"G"	"H"
N1	4'-6"	30"	18"	20"		0.375"	0.375"	
N2	4'-6"	42"	30"	32"		0.375"	0.562"	
N3	4'-6"	42"	30"	32"		0.375"	0.562"	
N4	4'-6"	42"	30"	33"		0.5"	0.562"	
N5	4'-6"	42"	30"	34"		0.75"	0.562"	
93SST	4'-6"	30"	18"	20"		0.375"	0.375"	
93LA	4'-6"	30"	18"	20"		0.5"	0.375"	
93MA	4'-6"	42"	30"	33"		0.375"	0.562"	

Virginia Dominion Power
 Surry - Skiffes Creek - Wheelton

Typical Pipe Pile Foundation Detail

Dominion DOMINION
 701E. CARY STREET
 RICHMOND, VA 23219

DRAWN	GY	DRAWING NO.
CHECKED	BLR	DWG. MODIFIED BY RBS, 07/03/09
APPROVED		
DATE	06/01/09	CAD NO.

DRAFT/CONCEPTUAL
 DO NOT USE FOR
 MATERIAL ORDERING
 OR FABRICATION

FILE
 DATE
 TIME