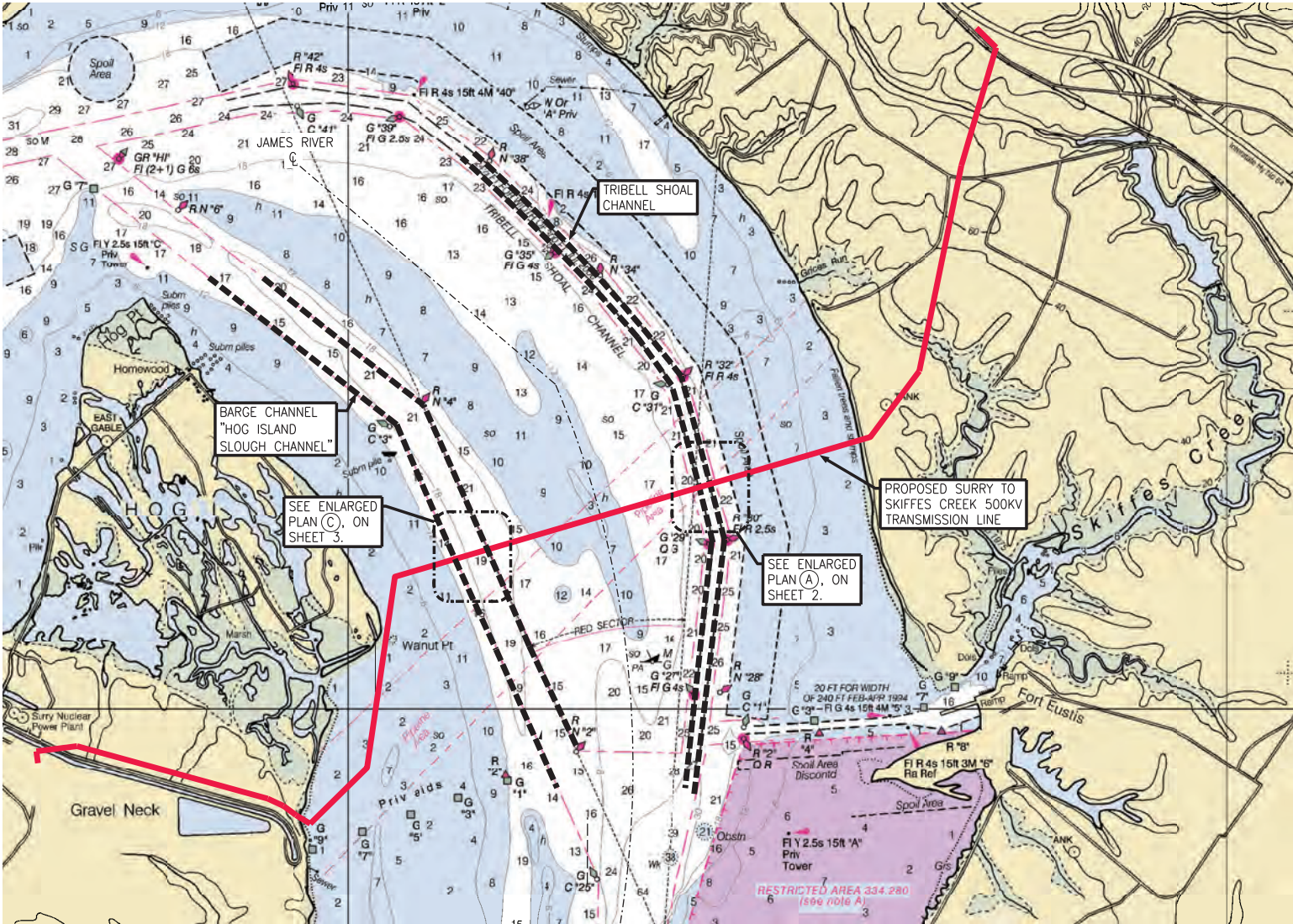
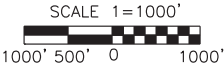


DOMINION POWER
JAMES RIVER FENDER DESIGN
SURRY TO SKIFFES CREEK 500KV TRANSMISSION LINE
SURRY AND JAMES CITY COUNTIES, VIRGINIA



KEY PLAN
INDEX AND DRAWINGS

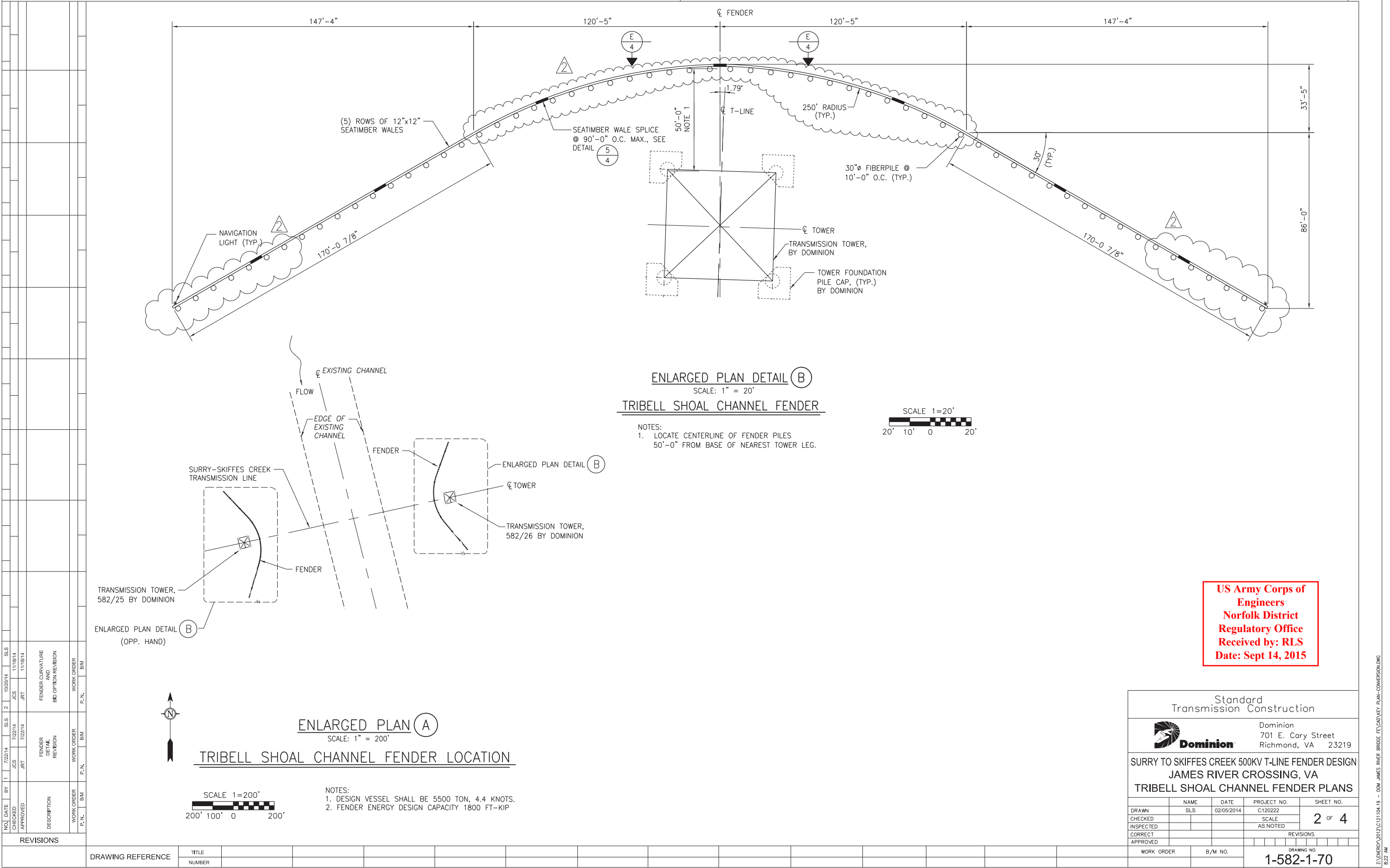
SHEET	DRAWING TITLE
1 OF 4	KEY PLAN AND INDEX DRAWINGS
2 OF 4	ENLARGED FENDER PLANS AT TRIBELL SHOAL CHANNEL
3 OF 4	ENLARGED FENDER PLANS AT BARGE CHANNEL
4 OF 4	FENDER SECTIONS AND DETAILS



US Army Corps of
Engineers
Norfolk District
Regulatory Office
Received by: RLS
Date: Sept 14, 2015


Standard Transmission Construction			
		Dominion 701 E. Cary Street Richmond, VA 23219	
SURRY TO SKIFFES CREEK 500KV T-LINE FENDER DESIGN JAMES RIVER CROSSING, VA KEY PLAN			
DRAWN	NAME	DATE	PROJECT NO.
CHECKED	SLS	02/05/2014	C120222
INSPECTED			SCALE
CORRECT			AS NOTED
APPROVED			REVISIONS
WORK ORDER		B/M NO.	
		DRAWING NO.	
		1-582-1-70	
CAD NO. KEY PLAN.dgn			

NO.	DATE	BY	1	7/22/14	SLS	2	10/20/14	SLS
CHECKED		JCS		7/22/14	JCS		11/18/14	
APPROVED		JRT		7/22/14	JRT		11/18/14	
FENDER CURVATURE AND BID OPTION REVISION								
FENDER DETAIL REVISION								
WORK ORDER								
P.N.								
B/M								
DESCRIPTION								
WORK ORDER								
P.N.								
B/M								
DRAWING REFERENCE								
TITLE								
NUMBER								



US Army Corps of
Engineers
Norfolk District
Regulatory Office
Received by: RLS
Date: Sept 14, 2015

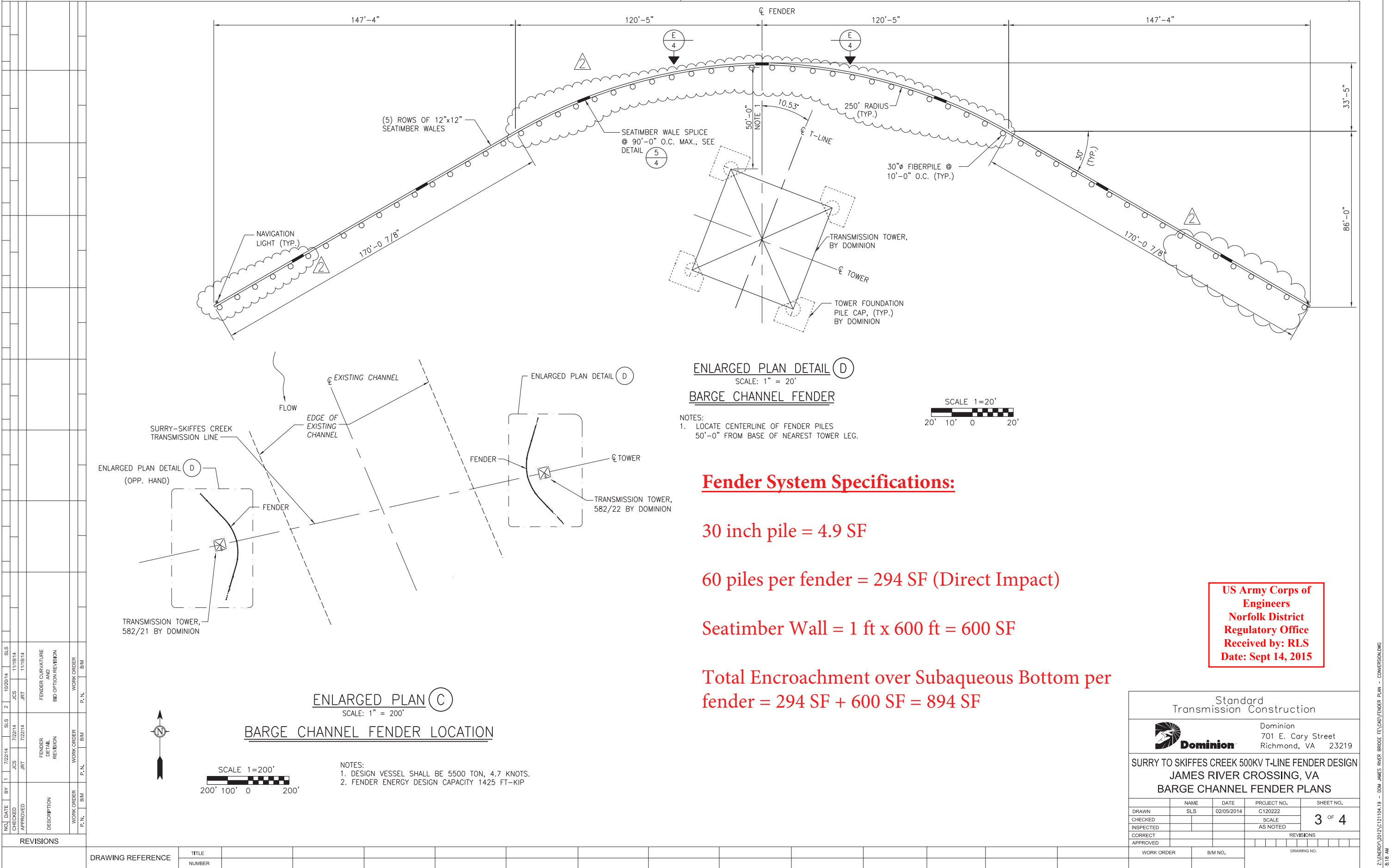
Standard
Transmission Construction



Dominion
701 E. Cary Street
Richmond, VA 23219

SURRY TO SKIFFES CREEK 500KV T-LINE FENDER DESIGN
JAMES RIVER CROSSING, VA
TRIBELL SHOAL CHANNEL FENDER PLANS

	NAME	DATE	PROJECT NO.	SHEET NO.
DRAWN	SLS	02/05/2014	C120222	2 OF 4
CHECKED			SCALE	
INSPECTED			AS NOTED	
CORRECT				
APPROVED				
WORK ORDER	B/M NO.		DRAWING NO.	
			1-582-1-70	
CAD NO.FENDER PLAN - TRIBELL SHOAL.dgn				



Fender System Specifications:

30 inch pile = 4.9 SF


60 piles per fender = 294 SF (Direct Impact)

Seatimber Wall = 1 ft x 600 ft = 600 SF

Total Encroachment over Subaqueous Bottom per fender = 294 SF + 600 SF = 894 SF

US Army Corps of Engineers
Norfolk District
Regulatory Office
Received by: RLS
Date: Sept 14, 2015

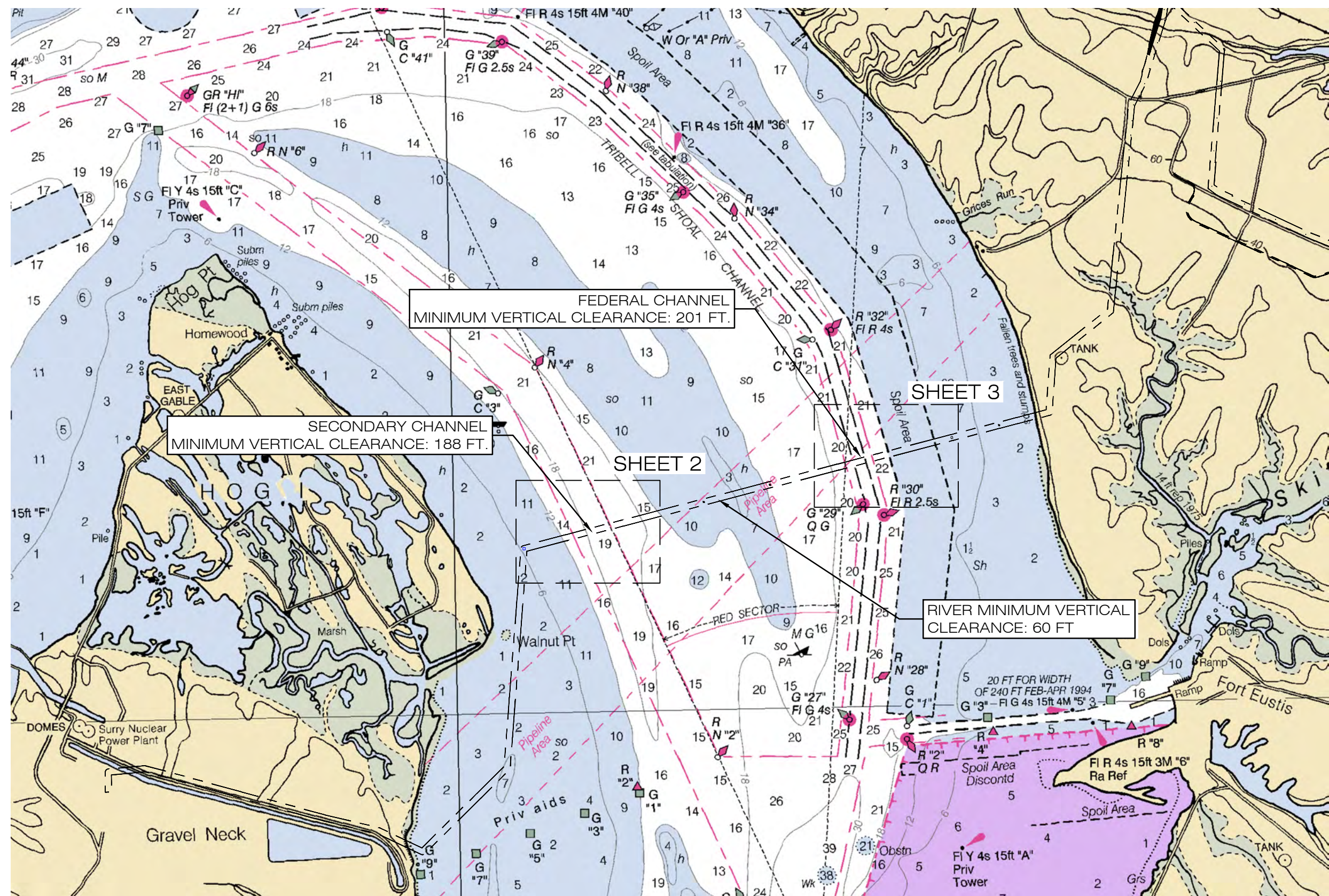
Standard
Transmission Construction



Dominion
701 E. Cary Street
Richmond, VA 23219

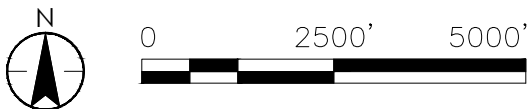
SURRY TO SKIFFES CREEK 500KV T-LINE FENDER DESIGN
JAMES RIVER CROSSING, VA
BARGE CHANNEL FENDER PLANS

NAME	DATE	PROJECT NO.	SHEET NO.
SLS	02/05/2014	C120222	3 OF 4
CHECKED		SCALE	
INSPECTED		AS NOTED	
CORRECT		REVISIONS	
APPROVED			
WORK ORDER	B/M NO.	DRAWING NO.	
CAD NO. FENDER PLAN - BARGE CHANNEL			



US Army Corps of
Engineers
Norfolk District
Regulatory Office
Received by: RLS
Date: Sept 14, 2015

NOTES:
1. COORDINATE SYSTEM NAD 83 STATE PLANE VIRGINIA SOUTH.




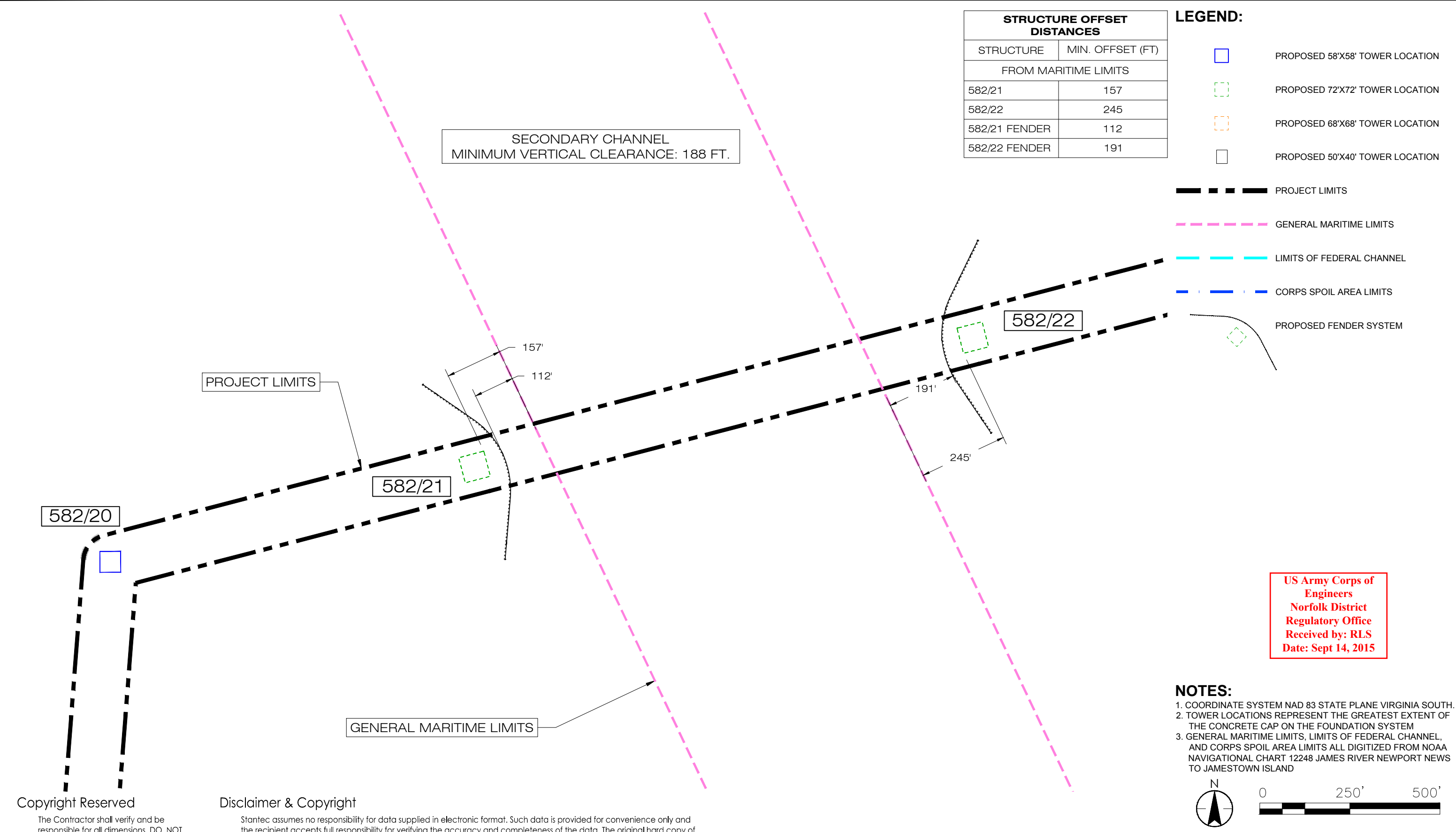
Copyright Reserved

Disclaimer & Copyright

The Contractor shall verify and be responsible for all dimensions. DO NOT scale the drawing - any errors or omissions shall be reported to Stantec without delay. The Copyrights to all designs and drawings are the property of Stantec. Reproduction or use for any purpose other than that authorized by Stantec is forbidden.

Stantec assumes no responsibility for data supplied in electronic format. Such data is provided for convenience only and the recipient accepts full responsibility for verifying the accuracy and completeness of the data. The original hard copy of the data, which has been sealed and signed, shall constitute the official documents of record for working purposes. In the event of inconsistencies between the electronic data and the original hard copy data, the hard copy data shall prevail. The recipient releases Stantec, its officers, employees, consultants and agents, from any and all claims arising in any way from the content or provision of the data. Nothing herein shall reduce or diminish Stantec's ownership of or copyright in the data or its compilation or arrangement. Any analysis, programs, systems, software or formatting in the data shall be the property of Stantec. The recipient of this data is prohibited from redistributing and from using any design or drawing information contained within the data, in whole or in part, for any purpose than that for which it was originally designed without the express written consent of Stantec.

 5209 Center Street Williamsburg, Virginia 23188 PHONE: (757) 220-6869 FAX: (757) 229-4507	FOR: SURRY - SKIFFES CREEK - WHEALTON SURRY COUNTY, JAMES CITY COUNTY, YORK COUNTY, CITY OF NEWPORT NEWS AND CITY OF HAMPTON, VIRGINIA		PROPOSED JAMES RIVER CROSSING NAVIGATIONAL CLEARANCES		FIGURE: 1
	JOB NUMBER: 203446520	DRAWN BY: MGS	CHECKED BY: CPG	APPROVED BY: CFC	DATE: 09-04-2015



STRUCTURE OFFSET DISTANCES	
STRUCTURE	MIN. OFFSET (FT)
FROM MARITIME LIMITS	
582/21	157
582/22	245
582/21 FENDER	112
582/22 FENDER	191

LEGEND:

- PROPOSED 58'X58' TOWER LOCATION
- PROPOSED 72'X72' TOWER LOCATION
- PROPOSED 68'X68' TOWER LOCATION
- PROPOSED 50'X40' TOWER LOCATION
- PROJECT LIMITS
- GENERAL MARITIME LIMITS
- LIMITS OF FEDERAL CHANNEL
- CORPS SPOIL AREA LIMITS
- PROPOSED FENDER SYSTEM

US Army Corps of
Engineers
Norfolk District
Regulatory Office
Received by: RLS
Date: Sept 14, 2015

NOTES:

- COORDINATE SYSTEM NAD 83 STATE PLANE VIRGINIA SOUTH.
- TOWER LOCATIONS REPRESENT THE GREATEST EXTENT OF THE CONCRETE CAP ON THE FOUNDATION SYSTEM
- GENERAL MARITIME LIMITS, LIMITS OF FEDERAL CHANNEL, AND CORPS SPOIL AREA LIMITS ALL DIGITIZED FROM NOAA NAVIGATIONAL CHART 12248 JAMES RIVER NEWPORT NEWS TO JAMESTOWN ISLAND

N

0 250' 500'

Copyright Reserved

Disclaimer & Copyright

The Contractor shall verify and be responsible for all dimensions. DO NOT scale the drawing - any errors or omissions shall be reported to Stantec without delay. The Copyrights to all designs and drawings are the property of Stantec. Reproduction or use for any purpose other than that authorized by Stantec is forbidden.

Stantec assumes no responsibility for data supplied in electronic format. Such data is provided for convenience only and the recipient accepts full responsibility for verifying the accuracy and completeness of the data. The original hard copy of the data, which has been sealed and signed, shall constitute the official documents of record for working purposes. In the event of inconsistencies between the electronic data and the original hard copy data, the hard copy data shall prevail. The recipient releases Stantec, its officers, employees, consultants and agents, from any and all claims arising in any way from the content or provision of the data. Nothing herein shall reduce or diminish Stantec's ownership of or copyright in the data or its compilation or arrangement. Any analysis, programs, systems, software or formatting in the data shall be the property of Stantec. The recipient of this data is prohibited from redistributing and from using any design or drawing information contained within the data, in whole or in part, for any purpose than that for which it was originally designed without the express written consent of Stantec.



5209 Center Street
Williamsburg, Virginia 23188
PHONE: (757) 220-6869 FAX: (757) 229-4507

FOR:
SURREY - SKIFFES CREEK - WHEALTON
SURREY COUNTY, JAMES CITY COUNTY,
YORK COUNTY, CITY OF NEWPORT NEWS
AND CITY OF HAMPTON, VIRGINIA

JOB NUMBER: 203446520
DRAWN BY: MGS

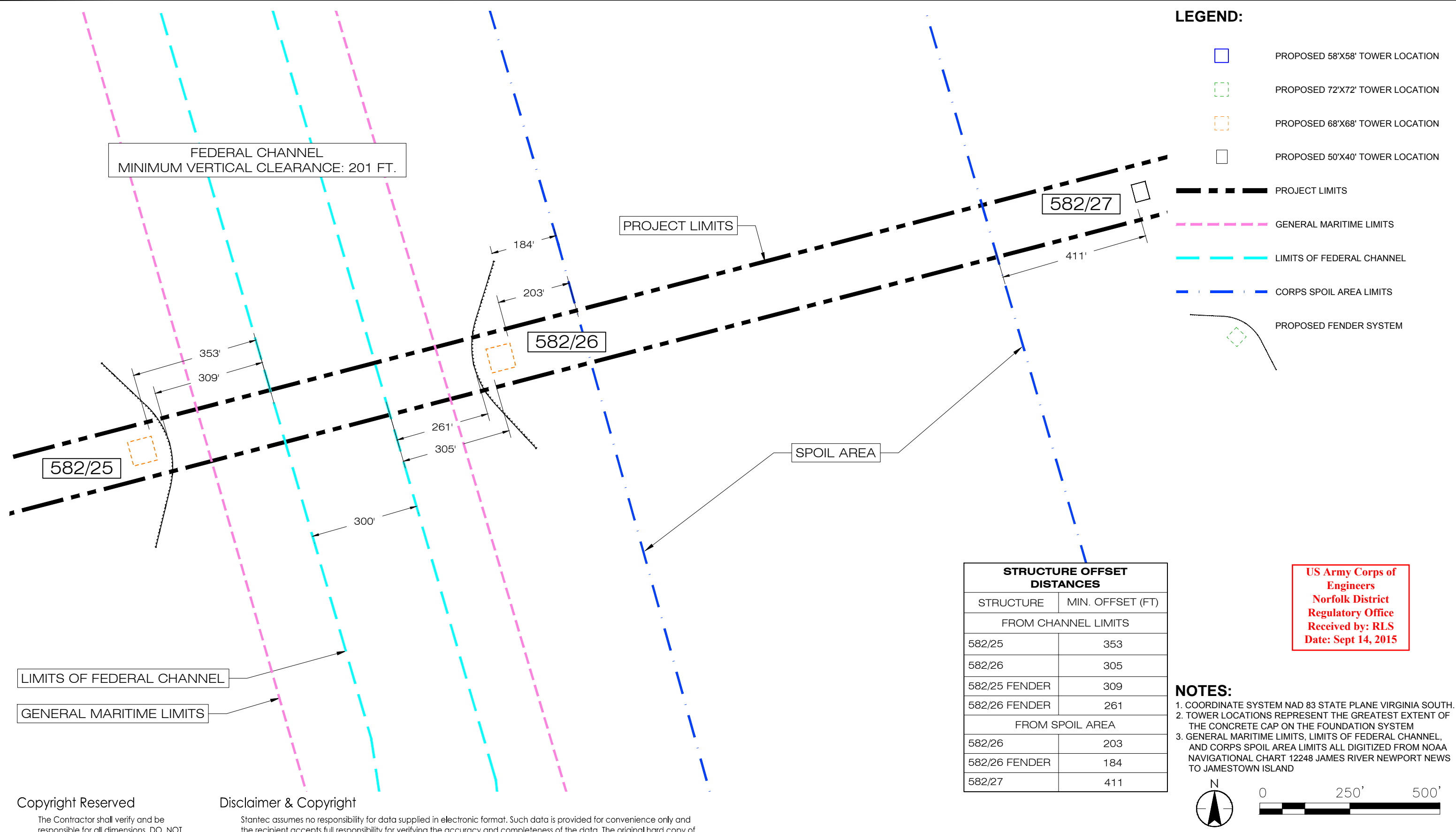
PROPOSED JAMES RIVER CROSSING
NAVIGATIONAL CLEARANCES

CHECKED BY: CPG
APPROVED BY: CFC

FIGURE:

2

DATE: 09-04-2015




Copyright Reserved

The Contractor shall verify and be responsible for all dimensions. DO NOT scale the drawing - any errors or omissions shall be reported to Stantec without delay. The Copyrights to all designs and drawings are the property of Stantec. Reproduction or use for any purpose other than that authorized by Stantec is forbidden.

Disclaimer & Copyright

Stantec assumes no responsibility for data supplied in electronic format. Such data is provided for convenience only and the recipient accepts full responsibility for verifying the accuracy and completeness of the data. The original hard copy of the data, which has been sealed and signed, shall constitute the official documents of record for working purposes. In the event of inconsistencies between the electronic data and the original hard copy data, the hard copy data shall prevail. The recipient releases Stantec, its officers, employees, consultants and agents, from any and all claims arising in any way from the content or provision of the data. Nothing herein shall reduce or diminish Stantec's ownership of or copyright in the data or its compilation or arrangement. Any analysis, programs, systems, software or formatting in the data shall be the property of Stantec. The recipient of this data is prohibited from redistributing and from using any design or drawing information contained within the data, in whole or in part, for any purpose than that for which it was originally designed without the express written consent of Stantec.

US Army Corps of Engineers
Norfolk District
Regulatory Office
Received by: RLS
Date: Sept 14, 2015



5209 Center Street
Williamsburg, Virginia 23188
PHONE: (757) 220-6869 FAX: (757) 229-4507

FOR:
SURREY - SKIFFES CREEK - WHEALTON
SURREY COUNTY, JAMES CITY COUNTY,
YORK COUNTY, CITY OF NEWPORT NEWS
AND CITY OF HAMPTON, VIRGINIA

JOB NUMBER: 203446520
DRAWN BY: MGS

PROPOSED JAMES RIVER CROSSING
NAVIGATIONAL CLEARANCES

CHECKED BY: CPG
APPROVED BY: CFC

FIGURE:
3

DATE:
09-04-2015