

Figure 1. General Location of JEB Little Creek – Fort Story

**RECEIVED**

By Virginia Marine Resources Commission at 6:55 am, Oct 29, 2013

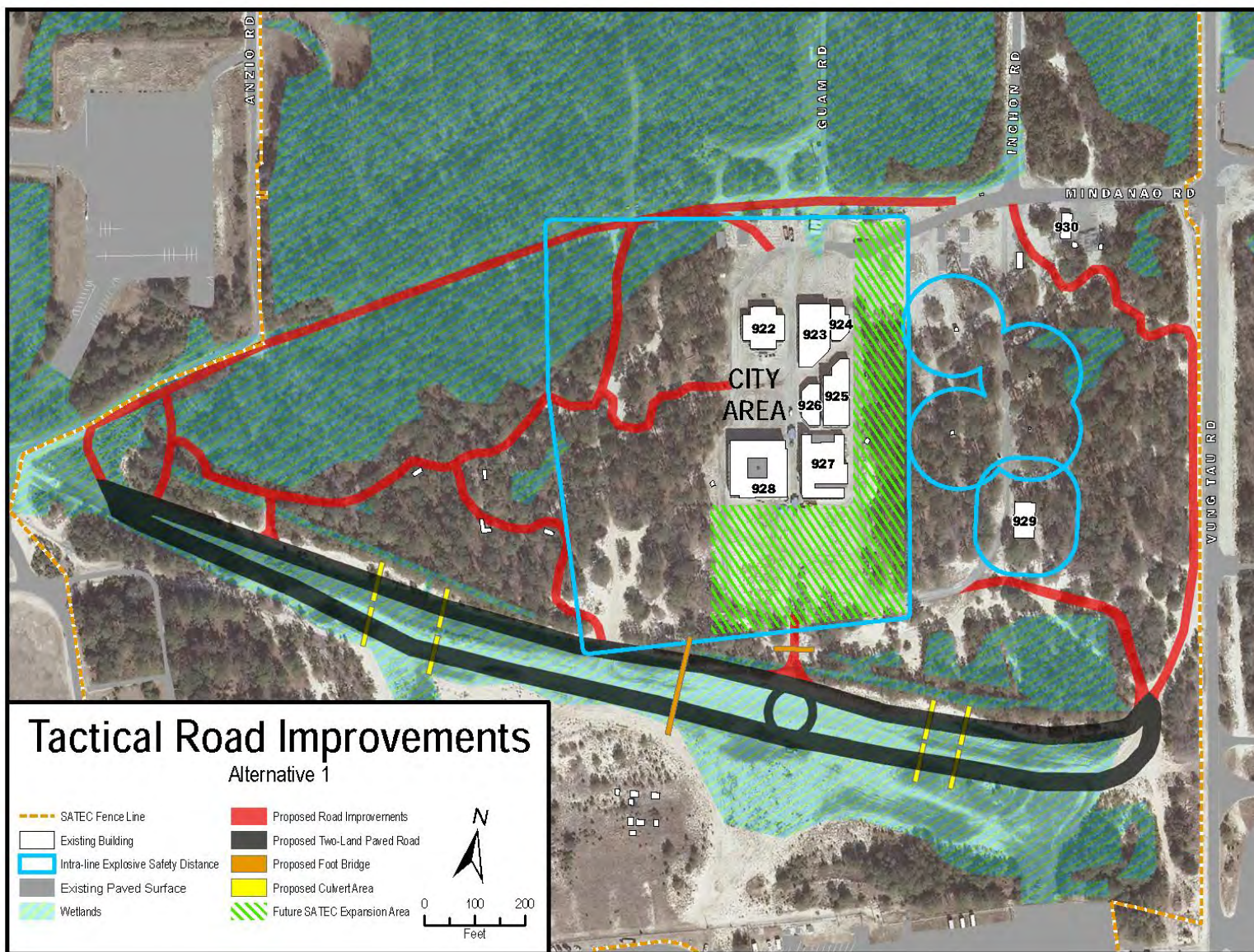


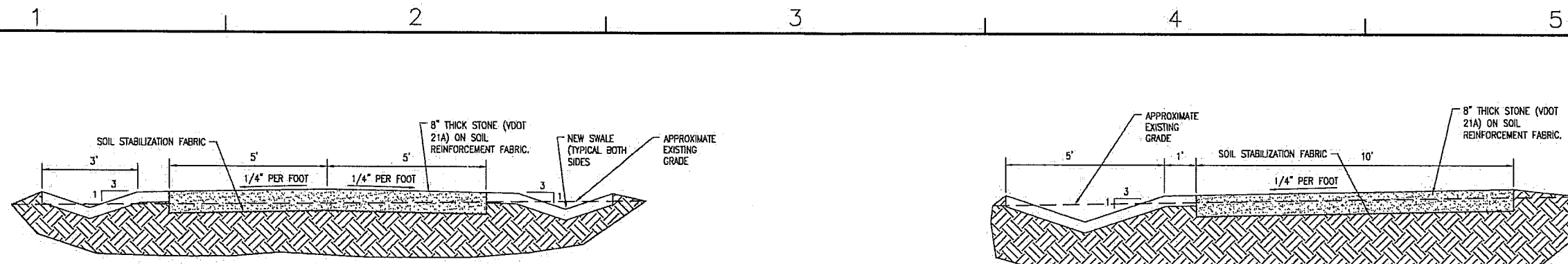
Figure 2. EA Alternative 1 Tactical Vehicle Trail Configuration

**RECEIVED**

By Virginia Marine Resources Commission at 6:55 am, Oct 29, 2013





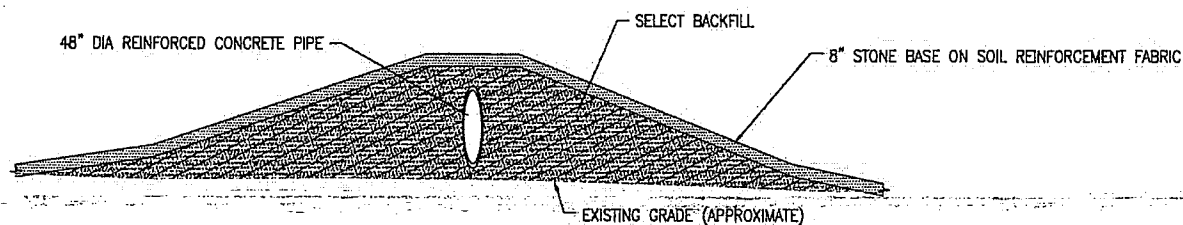


GRAVEL ROAD SECTION - SWALES BOTH SIDES

NOT TO SCALE

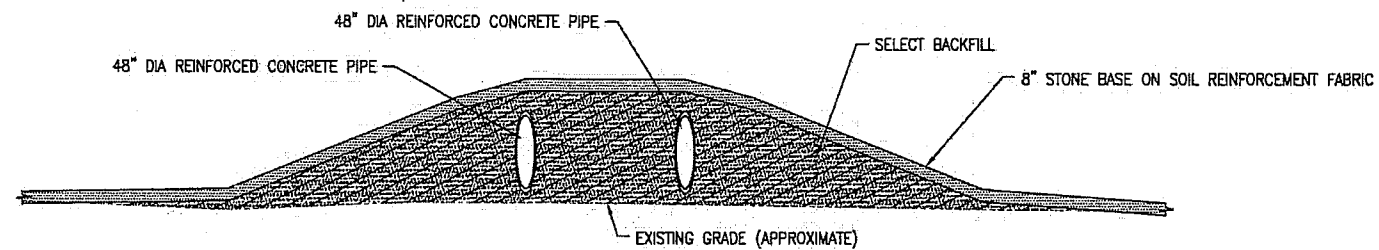
GRAVEL ROAD SECTION - SWALE ONE SIDE

NOT TO SCALE



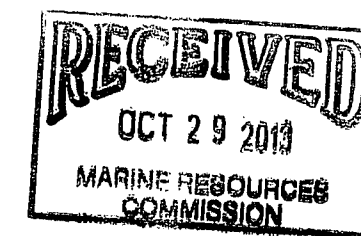
SECTION - SINGLE PIPE @ CENTERLINE OF ROAD

SCALE - 1"=5' (VERTICAL), 1"=20' (HORIZONTAL)



SECTION - DOUBLE PIPE

NOT TO SCALE



PRELIMINARY  
 NOT FOR CONSTRUCTION

DES	SS	DRW	SS	CHK	REN
					S. SUMNER
BRANCH MANAGER					R. E. NEAL, P.E.
CHIEF ENGINEER					S. M. L., P.E.

DEPARTMENT OF THE ARMY  
 NAVAL FACILITIES ENGINEERING COMMAND  
 NAVAL FACILITIES ENGINEERING COMMAND - MID-ATLANTIC  
 HAMPTON ROADS DISTRICT - FORT LITTLE CREEK  
 JEBELCFS - FORT STORY  
 VIRGINIA BEACH, VA  
 NEW GRAVEL ROAD FOR SATEC COMPOUND

SCALE:	AS NOTED
PROJECT NO.:	N/A
CONSTR. CONTR. NO.:	N/A
NAVFAC DRAWING NO.:	N/A
SHEET	2 OF 3

C-501

FILE NAME: D:\Documents and Settings\jvelazquez\My Documents\Natic\1180715-1180715-C-SP\renamed\_8\_13.dwg USER: jvelazquez DATE: 9/24/2013 9:27:00am PLOTTED: Tuesday, September 24, 2013 9:27:00am