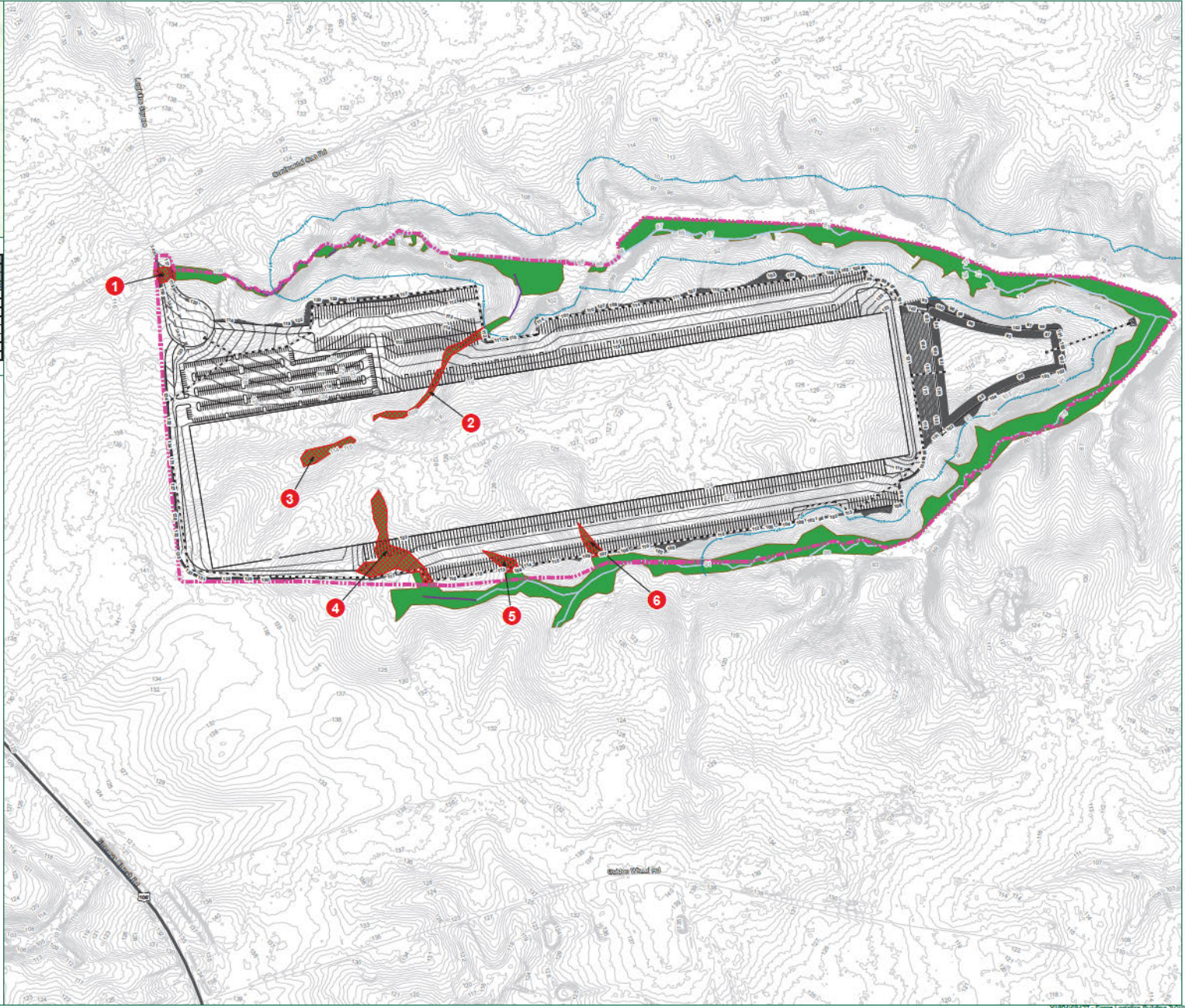




Impact ID	Wetland (sq. ft)				Stream (sq. ft)			
	Temporary	Permanent	Temporary	Permanent	Temporary	Permanent	Temporary	Permanent
1		4,573						
2		14,865						
3		3,276						
4		32,547						
5		5,629						
6		5,139						
Total	0 sq ft 0.00 ac	72,130 sq ft 1.64 ac	0 ft	0 ft	0 sq ft 0.00 ac	0 sq ft 0.00 ac	0 sq ft 0.00 ac	0 sq ft 0.00 ac

Legend

- Project Study Limits - 111.4 Acres
- Limits of Disturbance - 82.4 Acres
- ✗ Wetland Impact
- Perennial Stream (R3)
- Intermittent Stream (R4)
- Permanent Wetland Impact
- Palustrine Emergent (PEM) Wetland
- Palustrine Forested (PFO) Wetland
- Palustrine Scrub-Shrub (PSS) Wetland
- Existing Topography
- Proposed Grading
- Proposed Sanitary Sewer
- Proposed Waterline
- Proposed Stormpipe
- Proposed RIPRAP



TIMMONS GROUP
 YOUR VISION. ACHIEVED THROUGH OURS.
 1011 WESTERN AVE., SUITE 201
 WASHINGTON, VA 22186
 WWW.TIMMONSGROUP.COM

FORGE LOGISTICS BUILDING 3
 NEW KENT COUNTY,
 VIRGINIA

DATE	09/10/2024
PROJECT NO.	69427
PROJECT NAME	FORGE LOGISTICS BUILDING 3
DESIGNED BY	A. MENFOLD

1. Waters of the U.S. within the project study limits have been located using satellite, Bluetooth GPS antennas by Timmons Group.
 2. Waters of the U.S. have not been confirmed by the U.S. Army Corps of Engineers.
 3. Project limits are approximate.
 4. Topography based on USGS LIDAR.
 5. Cowardin Stream Classifications are based solely on field observations. No formal stream assessment methodology was completed to determine these Cowardin Classifications.

These data and associated graphics and the map are provided for informational purposes only and are not intended to be used for any other purpose. The user assumes all liability for any use of these data and graphics for any purpose other than that intended by the provider.

NO.	DATE	DESCRIPTION

FIGURE 5:
 PRELIMINARY JURISDICTIONAL WATERS OF THE U.S. IMPACTS MAP

REVISIONS

SCALE (FEET)

0 200 400
 1" = 200'
 1"