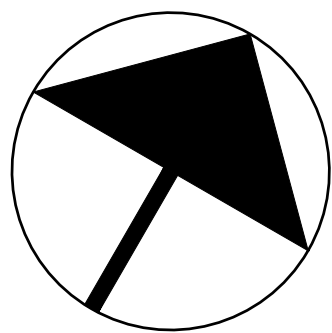


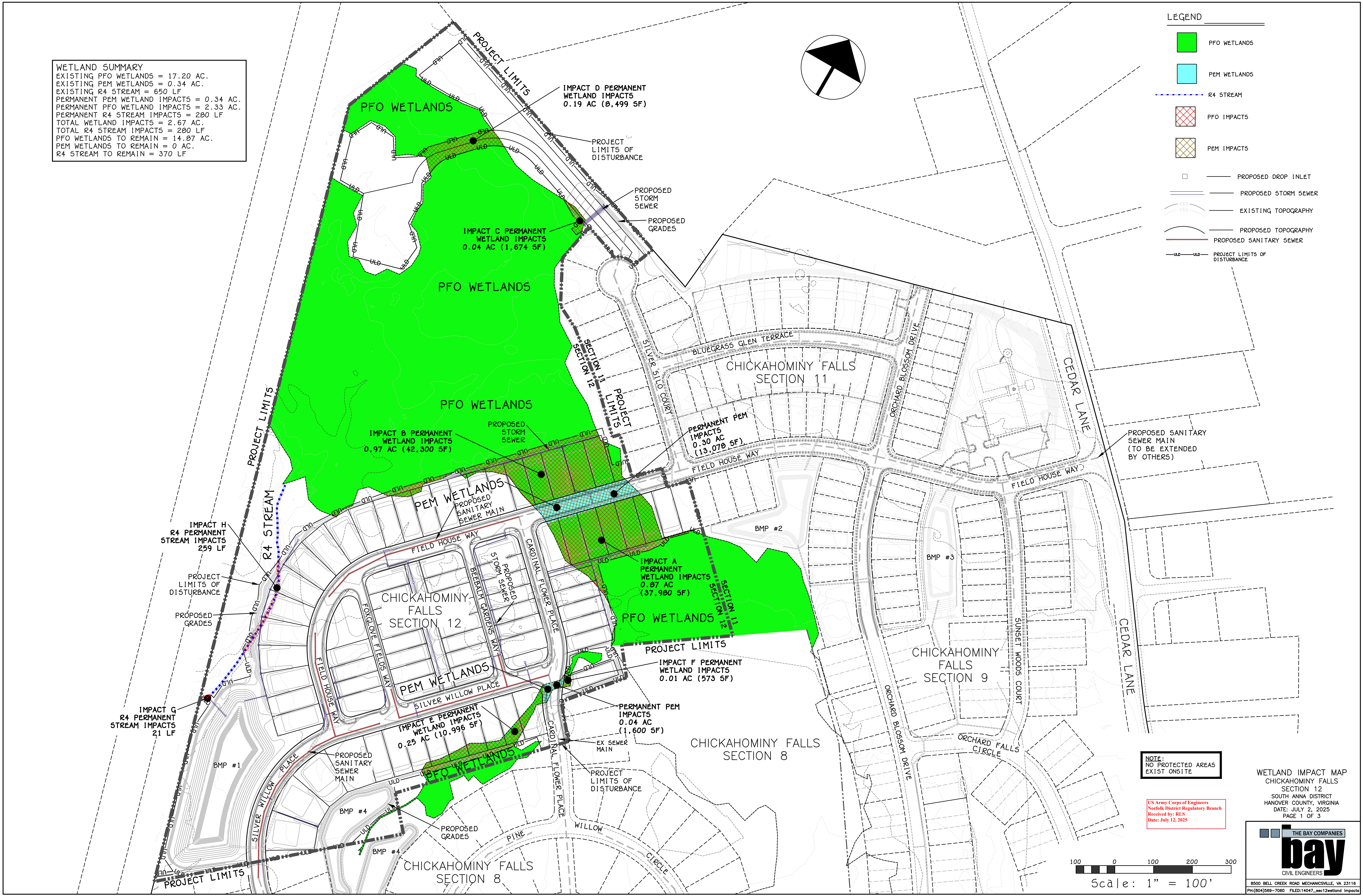
WETLAND SUMMARY
EXISTING PFO WETLANDS = 17.20 AC.
EXISTING PEM WETLANDS = 0.34 AC.
EXISTING R4 STREAM = 650 LF
PERMANENT PEM WETLAND IMPACTS = 0.34 AC.
PERMANENT PFO WETLAND IMPACTS = 2.33 AC.
PERMANENT R4 STREAM IMPACTS = 280 LF
TOTAL WETLAND IMPACTS = 2.67 AC.
TOTAL R4 STREAM IMPACTS = 280 LF
PFO WETLANDS TO REMAIN = 14.87 AC.
PEM WETLANDS TO REMAIN = 0 AC.
R4 STREAM TO REMAIN = 370 LF



LEGEND

- PFO WETLANDS
- PEM WETLANDS
- R4 STREAM
- PFO IMPACTS
- PEM IMPACTS

- PROPOSED DROP INLET
- PROPOSED STORM SEWER
- EXISTING TOPOGRAPHY
- PROPOSED TOPOGRAPHY
- PROPOSED SANITARY SEWER
- PROJECT LIMITS OF DISTURBANCE



NOTE:
NO PROTECTED AREAS
EXIST ONSITE

US Army Corps of Engineers
Norfolk District Regulatory Branch
Received by: RLS
Date: July 12, 2025

Scale: 1" = 100'

WETLAND IMPACT MAP
CHICKAHOMINY FALLS
SECTION 12
SOUTH ANNA DISTRICT
HANOVER COUNTY, VIRGINIA
DATE: JULY 2, 2025
PAGE 1 OF 3

