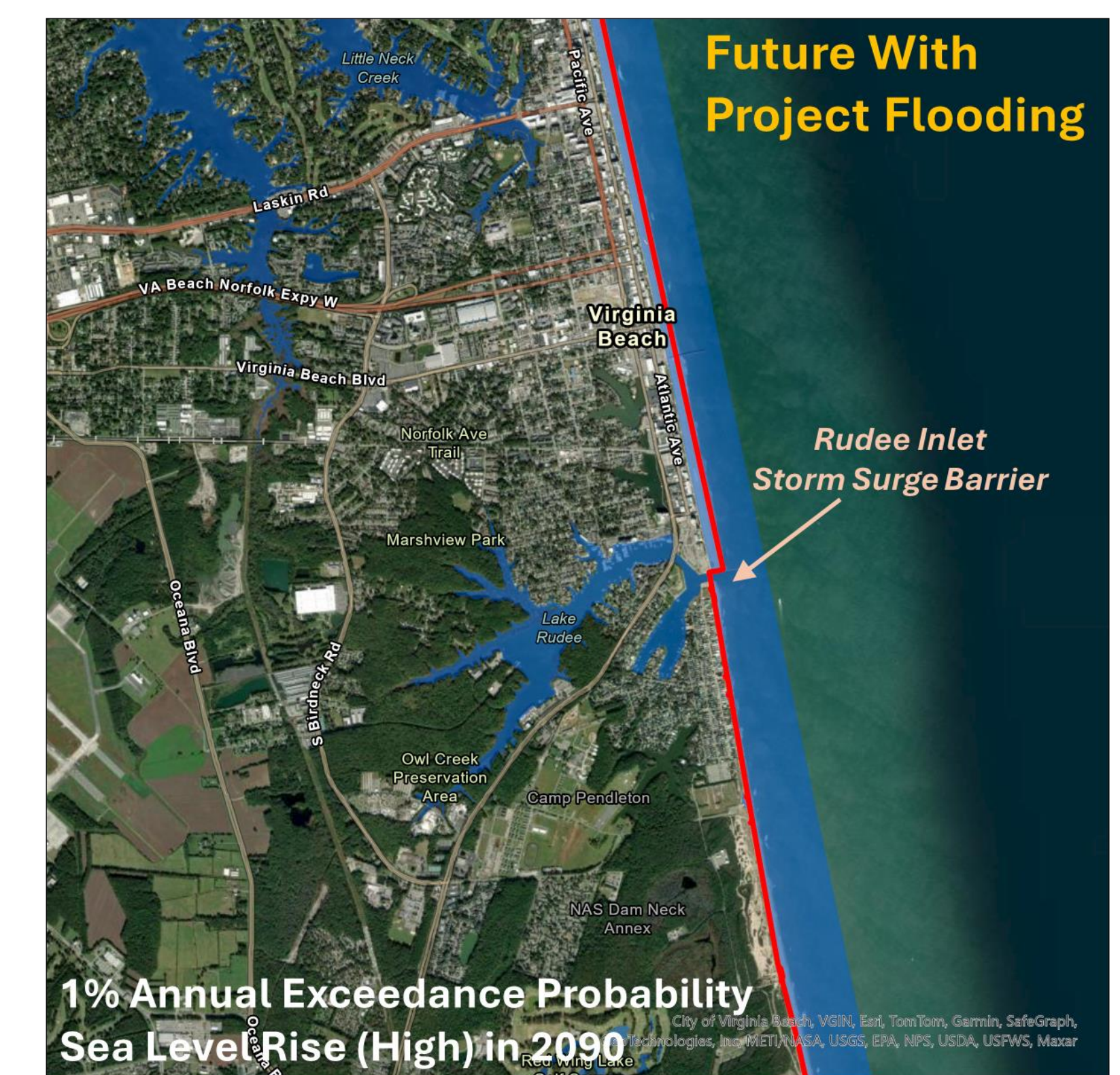
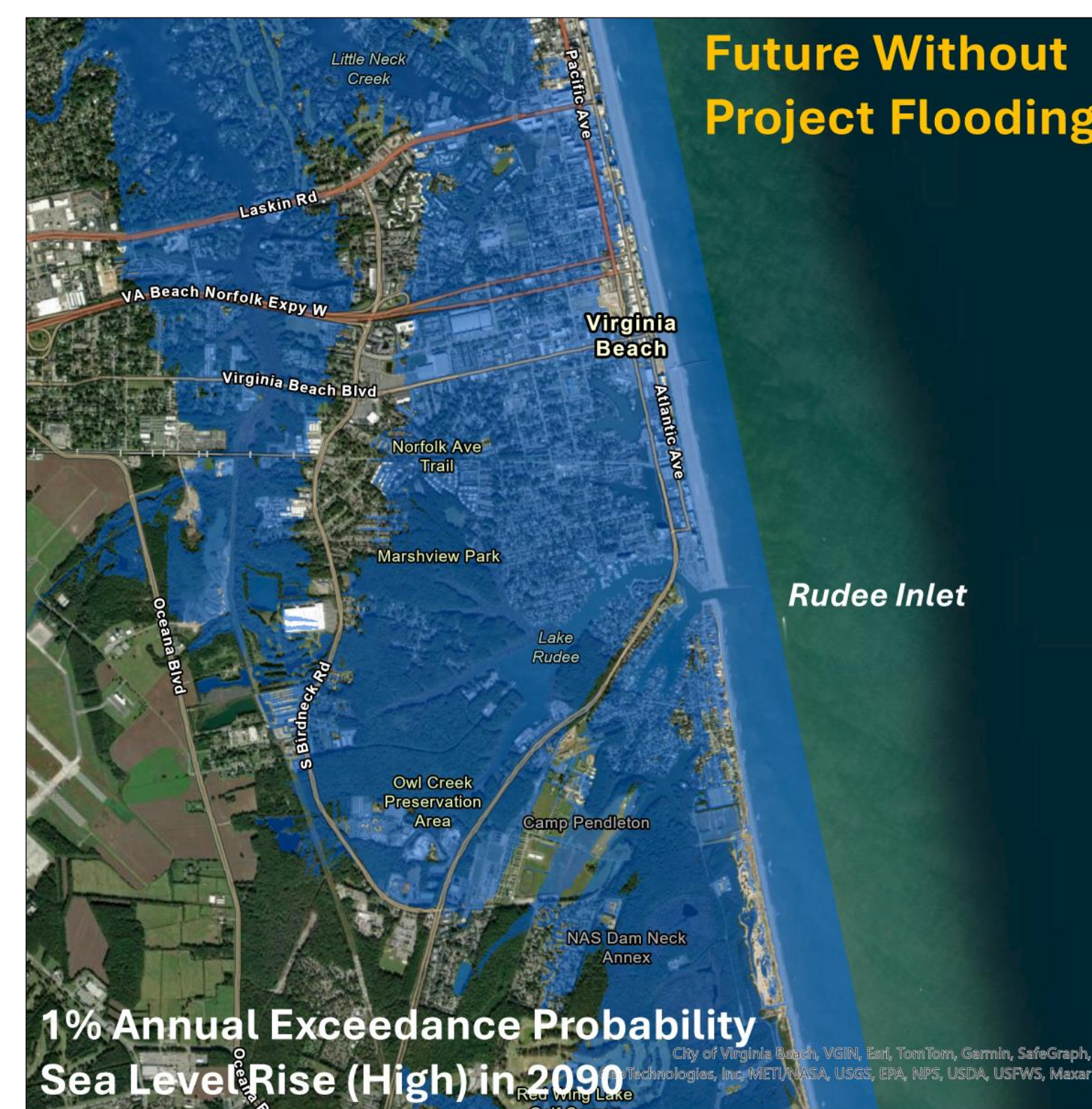
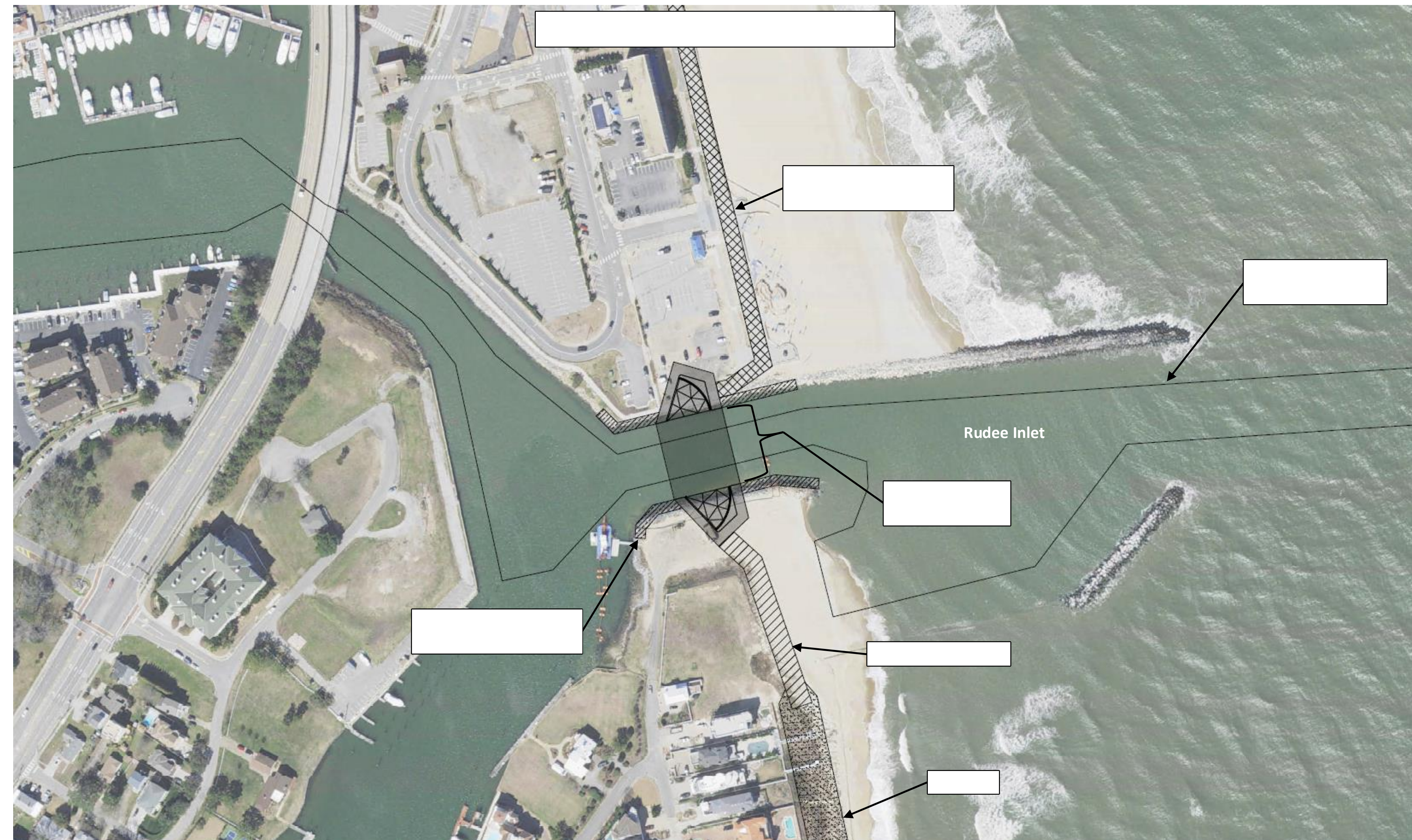
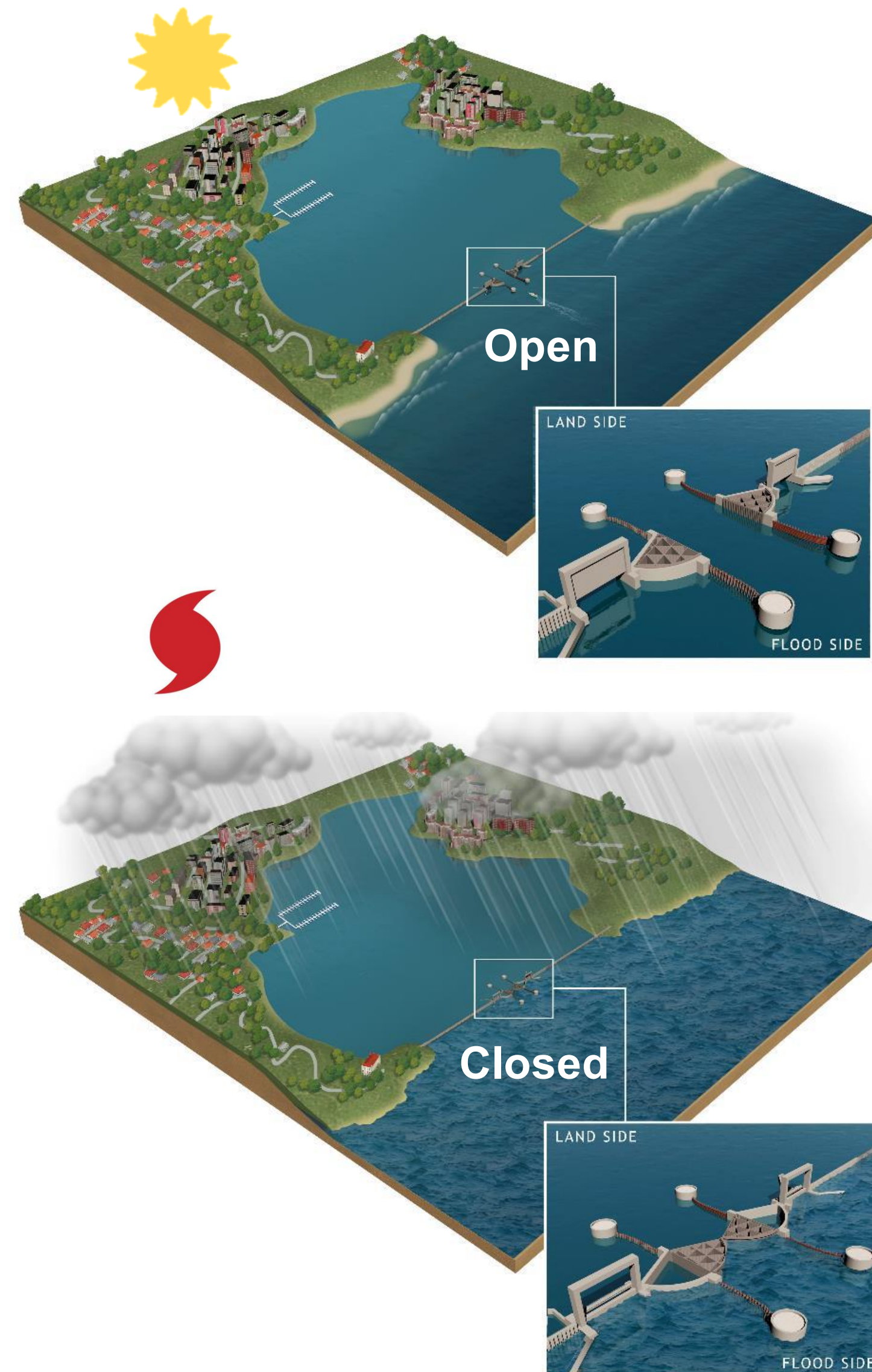


# ★ CITY OF VIRGINIA BEACH ★ COASTAL STORM RISK MANAGEMENT FEASIBILITY STUDY

**Storm surge barriers** reduce risk to people, structures and infrastructure located in the back bay and estuarine environment against flooding caused by storm surge and waves

**Storm surge barriers** consist of a series of movable gates that stay open under normal conditions to let navigation and flow pass but are closed when storm surges are forecasted to exceed a specific water level.

**Storm surge barriers** may have environmental impacts under normal conditions associated with reductions in water exchange between the ocean and bay/estuarine environment.

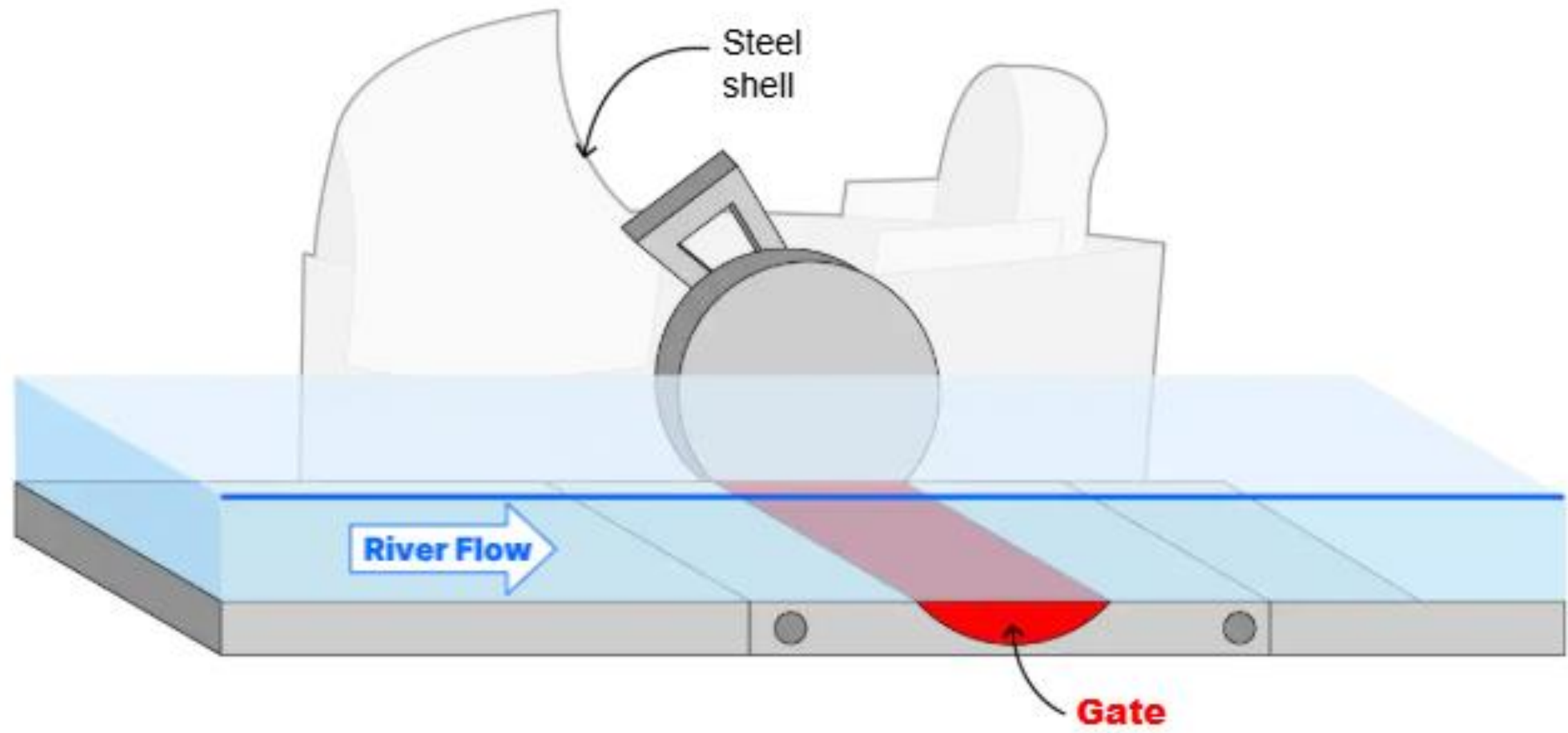




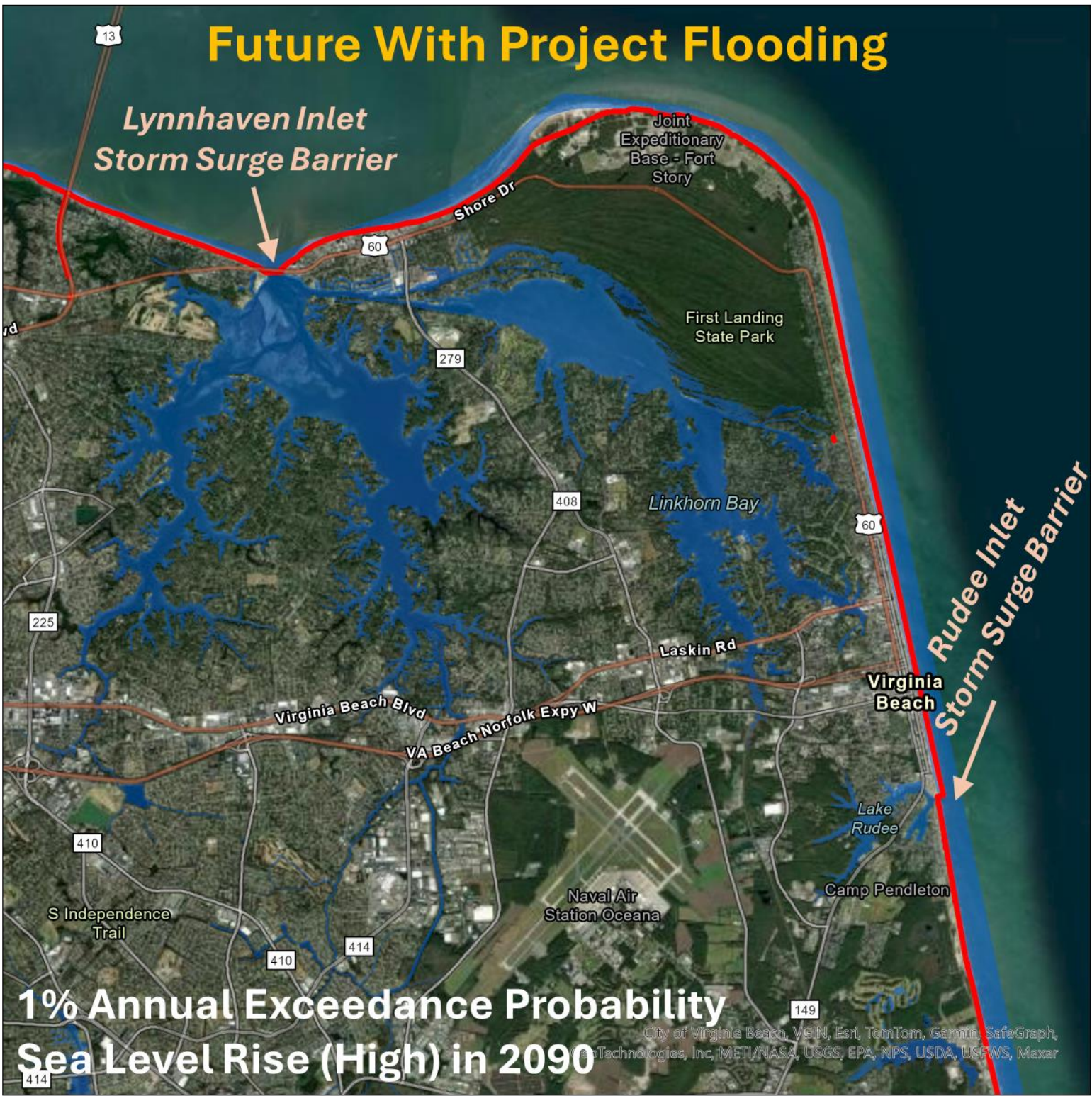
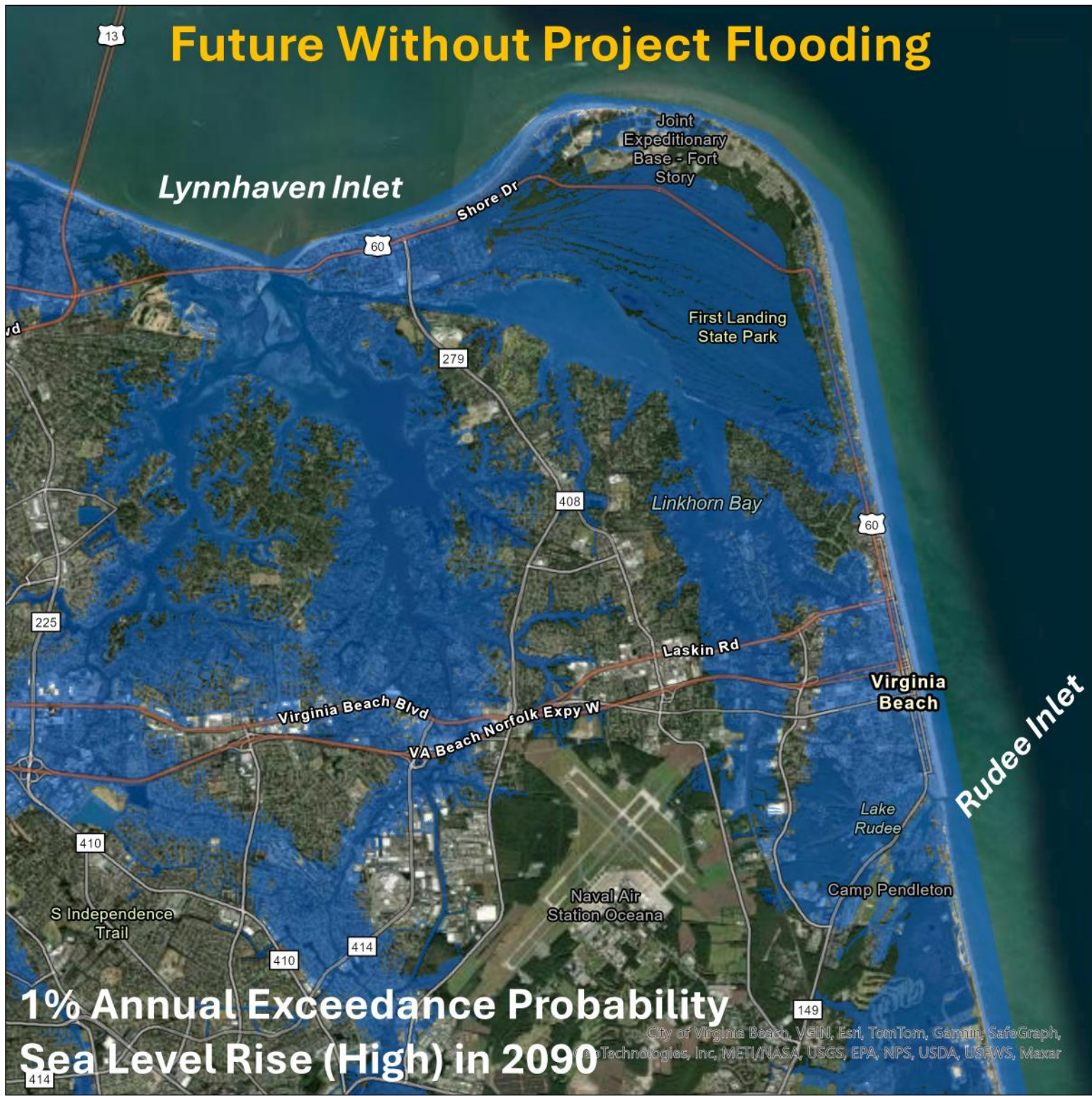
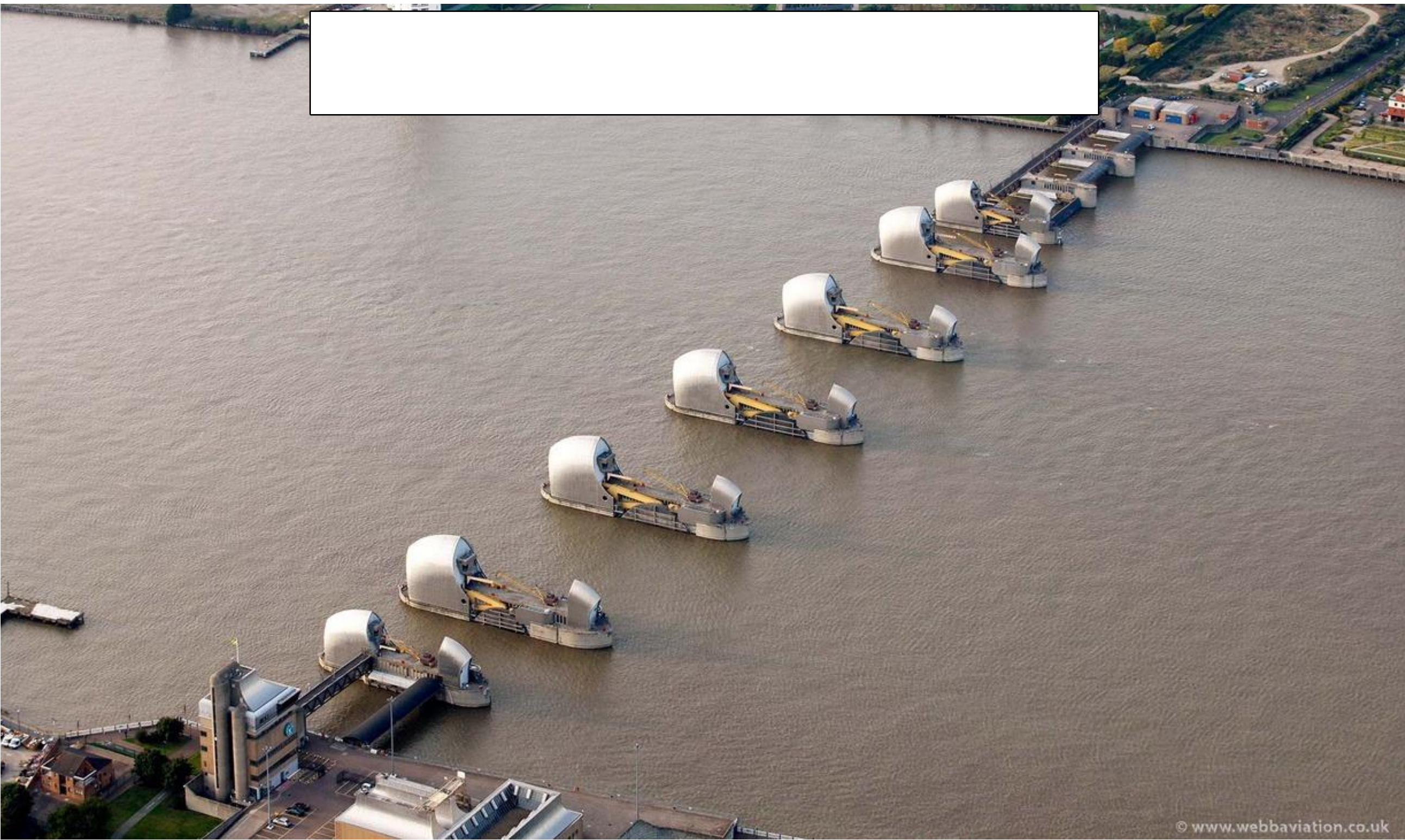
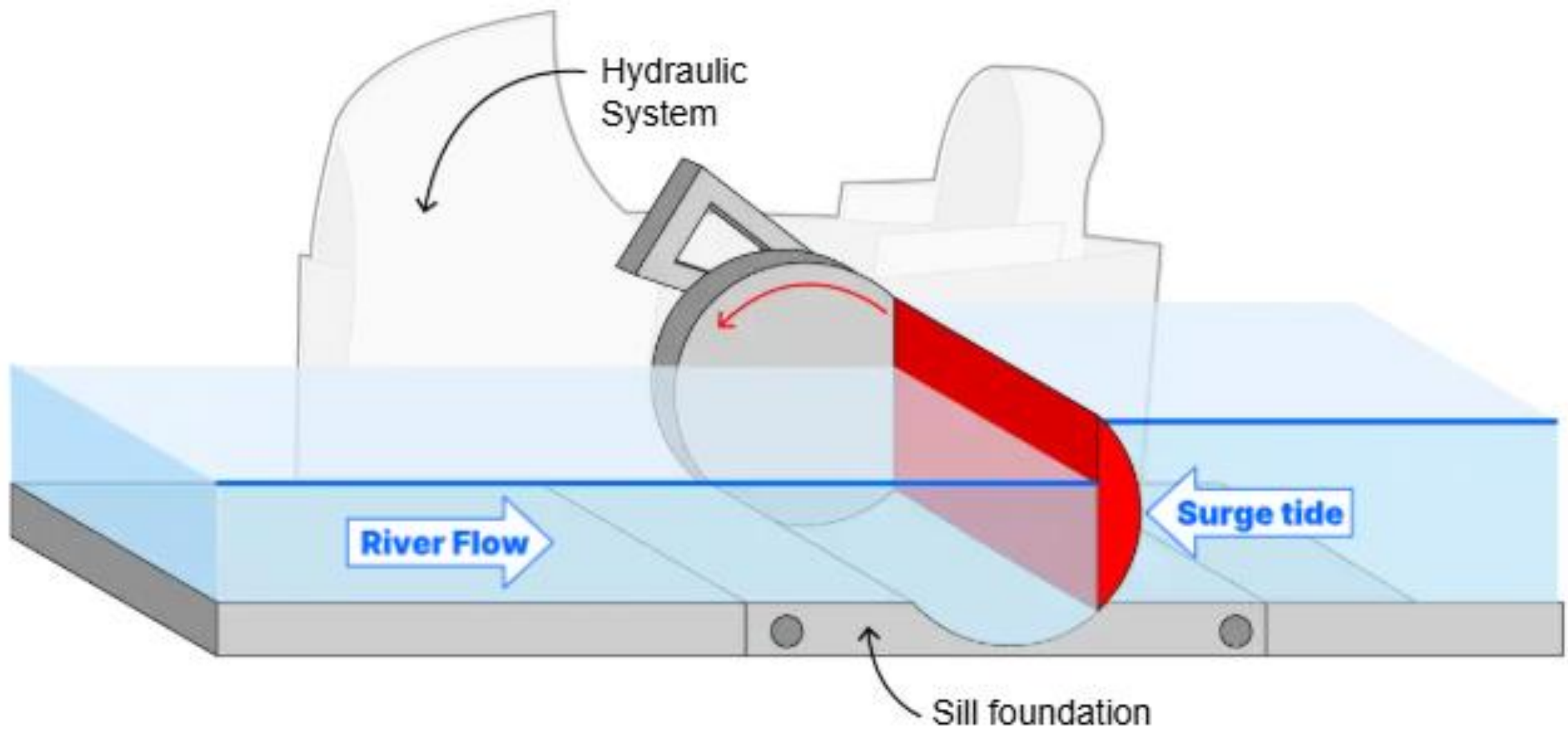
★ CITY OF VIRGINIA BEACH ★

# COASTAL STORM RISK MANAGEMENT FEASIBILITY STUDY

Rising Sector Gate Open Position



Rising Sector Gate Closed Position





★ CITY OF VIRGINIA BEACH ★

# COASTAL STORM RISK MANAGEMENT FEASIBILITY STUDY

