

Tech Exhibit 15-16

Family Housing Areas

Old Quarters Area

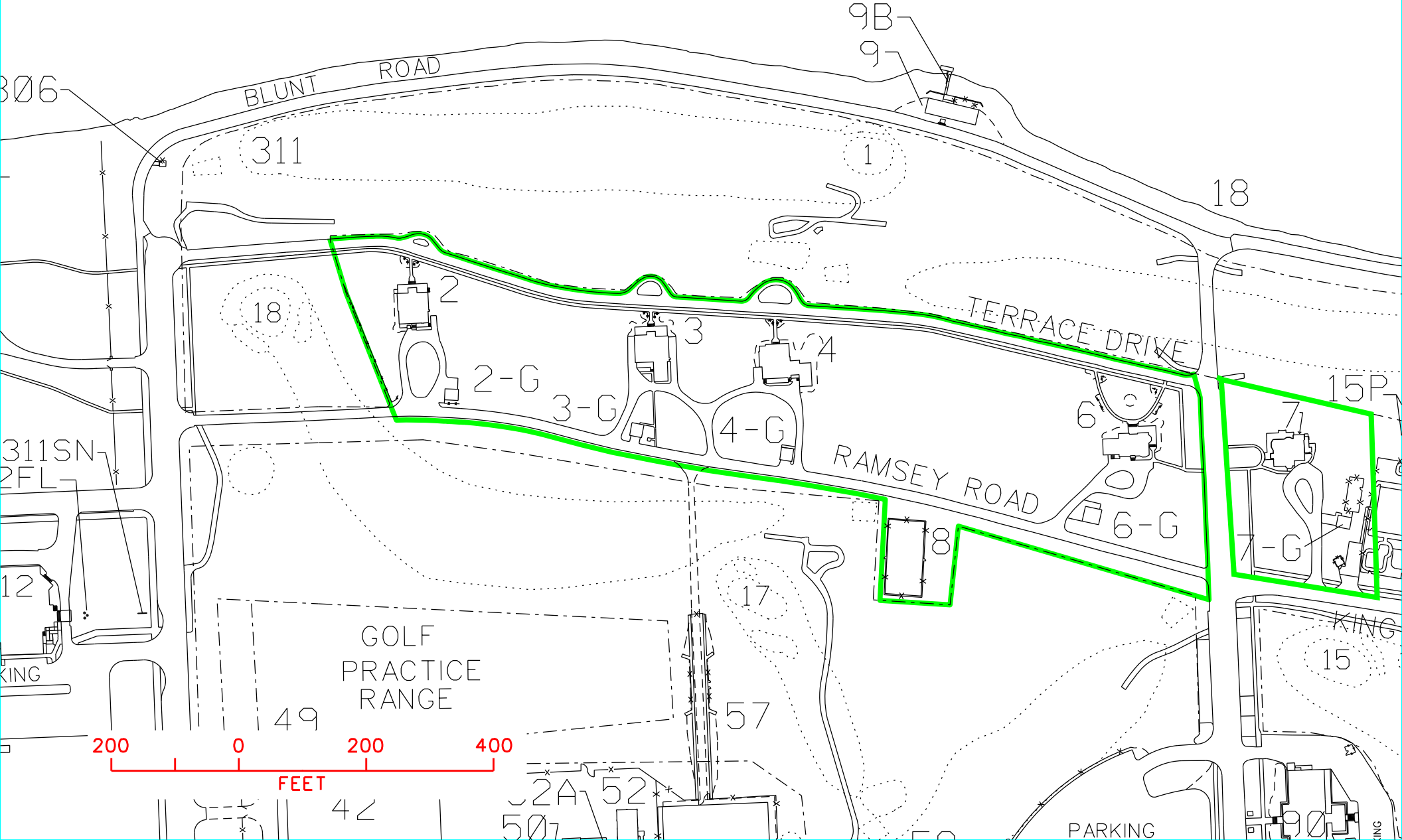
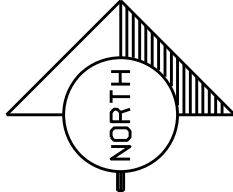
East Circle Area

Deer Crossing Area

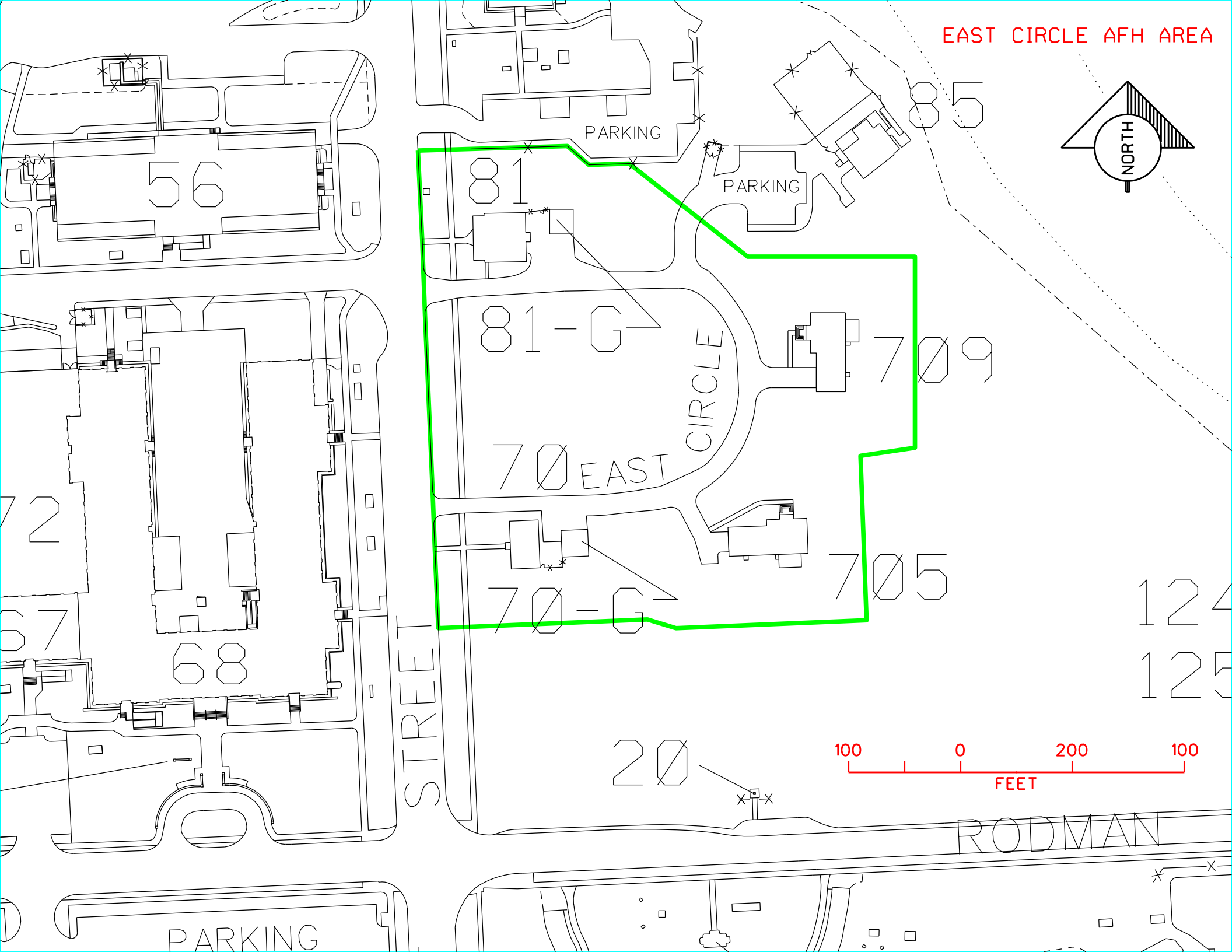
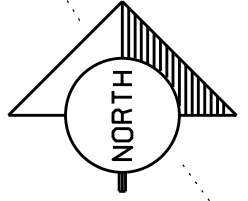
Eagle Point Area

The 4 Family Housing Areas are shown in this tech exhibit on the following pages in the order listed above. All requirements both scheduled and unscheduled will be funded by Army Family Housing funds within these areas.

MISSISSIPPI RIVER



EAST CIRCLE AFH AREA



STREET

PARKING

PARKING

81-G
70 EAST CIRCLE

70-G

705

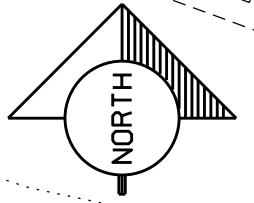
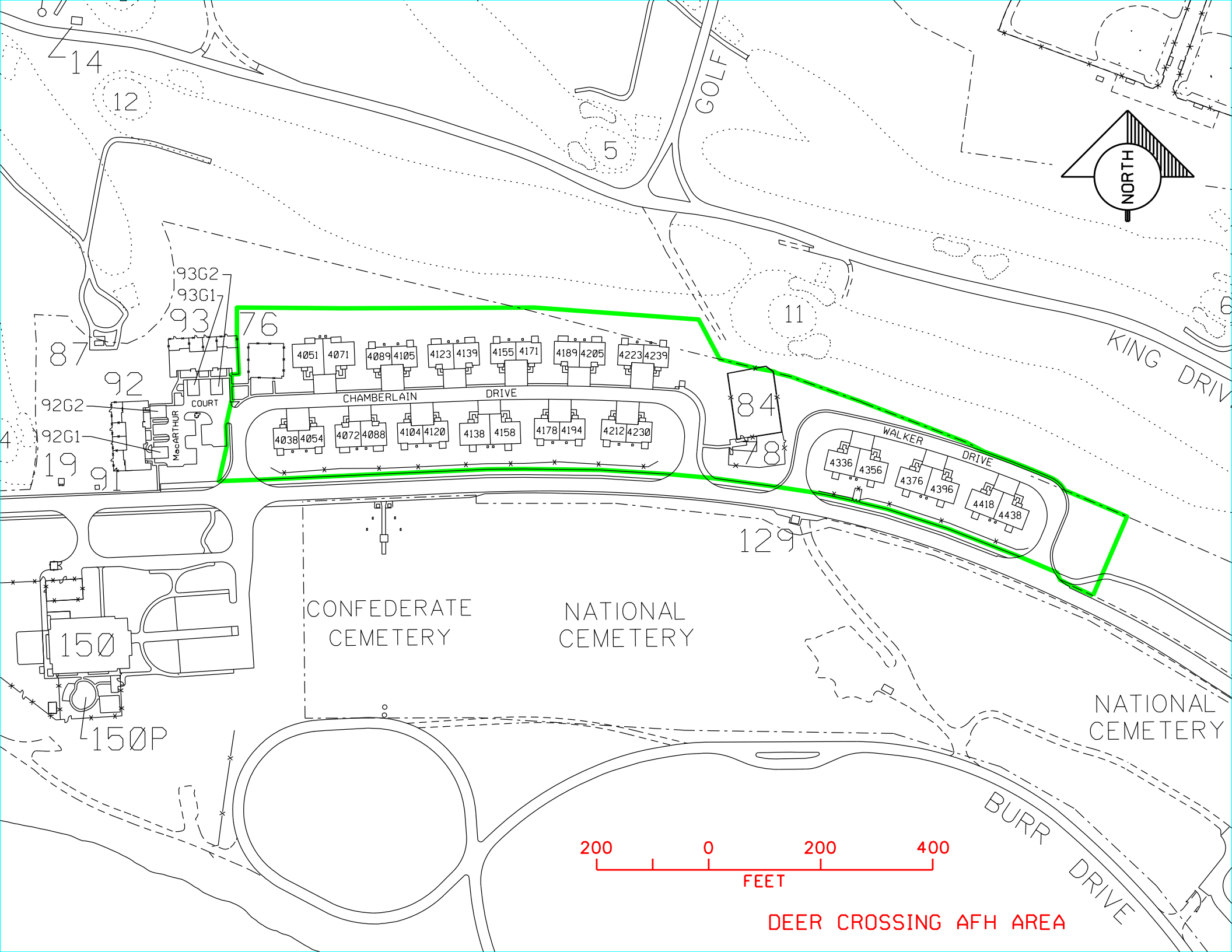
709

20

100 0 200 100
FEET

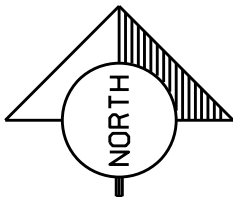
RODMAN

PARKING



DEER CROSSING AFH AREA

EAGLE POINT AFH AREA



MISSISSIPPI RIVER

DAVENPORT DRIVE

DURNIN AVENUE

BAKER AVENUE

DURNIN AVENUE

WHITTEMORE ST.

LANDIS ST.

340

339

NORTH AVENUE

335

PARKING

PARKING

349

PARKING

PARKING

351

PARKING

354

352

WEST

PERS

346FL

342

344

383

301

301

316

364

200

0

200

400

FEET

2315 2337 2357 2381 2403 2425 2447

2318 2342 2362 2384 2406 2428 2450

2320 2340 2360

2418 2442 2464

2490 2514 2534 2558 2578 2600 2620 2642

2504 2530 2548 2566 2588 2608 2628

2527 2543 2571 2593 2611 2635