

## SAMPLE AND BUILDING INSPECTION REPORT

**Client: Rock Island, Installation-wide Asbestos Survey, Phase VI, Quadrants 1, 2, 3, and 4**

Location: 7  
 Building Use/Description: Colonel housing  
 AVG. # People/Hr: 3  
 AVG. # Hrs/Day: 14  
 AVG. # Days/Year: 340  
 AVG. # Person Hrs/Year: 14280

Date: 1/6/1997  
 Inspectors: S. Lynn, J. Romine

Type of Material	Suspect ACBM	Sample No.	*Quantity	Condition	Friable	Physical	Air	Vibration	Water	Hazard Rank
Blue/grey linoleum	Yes	5RIA 7.3.2.1 - ND	27 sf	Good	No	Moderate	Low	Low	Low	2
Blue/grey linoleum	Yes	6RIA 7.3.2.2 - ND	27 sf	Good	No	Moderate	Low	Low	Low	2
Grout on lip of fireplace	Yes	10RIA 7.6.1.1 - ND	4 lf	Fair	Yes	Low	Moderate	Low	Low	4
Light grey CBM	Yes	7RIA 7.4.2.1 - ND	25 lf	Good	No	Moderate	Low	Low	Low	2
Light grey CBM	Yes	8RIA 7.4.2.2-A - ND	25 lf	Good	No	Moderate	Low	Low	Low	2
Light grey with flowered linoleum	Yes	2RIA 7.2.2.1 - ND	180 sf	Good	No	Moderate	Low	Low	Low	2
Light grey with flowered linoleum	Yes	3RIA 7.2.2.2 - ND	180 sf	Good	No	Moderate	Low	Low	Low	2
Mastic	Yes	12RIA 7.7.1.1-B - ND	600 sf	Good	No	Moderate	Low	Low	Low	2
Mastic	Yes	13RIA 7.7.1.2-B - ND	600 sf	Good	No	Moderate	Low	Low	Low	2
Mastic	Yes	4RIA 7.1.2.2-B - ND	35 lf	Good	No	Low	Low	Low	Low	1
Mastic	Yes	8RIA 7.4.2.2-B - ND	25 lf	Good	No	Moderate	Low	Low	Low	2
Paper backing on fiberglass batt insulation	Yes	14RIA 7.8.B.1 - ND (QC ND)	30 sf	Good	No	Low	Low	Low	Low	1

**Notes:**

ACBM = Asbestos-containing building material    psi = Pounds per square inch  
 CH = Chrysotile    TSI = Thermal system insulation  
 AM = Amosite    FT = Floor tile  
 CR = Crocidolite    CT = Ceiling tile  
 DCW = Domestic cold water    CBM = Cove base molding  
 DHW = Domestic hot water    lf = Linear feet  
 ND = Not detected    sf = Square feet  
 Dup = Duplicate    NA = No sample collected

\*Quantities listed are totals per homogeneous area, unless otherwise indicated in the description of the material.

## SAMPLE AND BUILDING INSPECTION REPORT

**Client: Rock Island, Installation-wide Asbestos Survey, Phase VI, Quadrants 1, 2, 3, and 4**

Location: 7  
 Building Use/Description: Colonel housing  
 AVG. # People/Hr: 3  
 AVG. # Hrs/Day: 14  
 AVG. # Days/Year: 340  
 AVG. # Person Hrs/Year: 14280

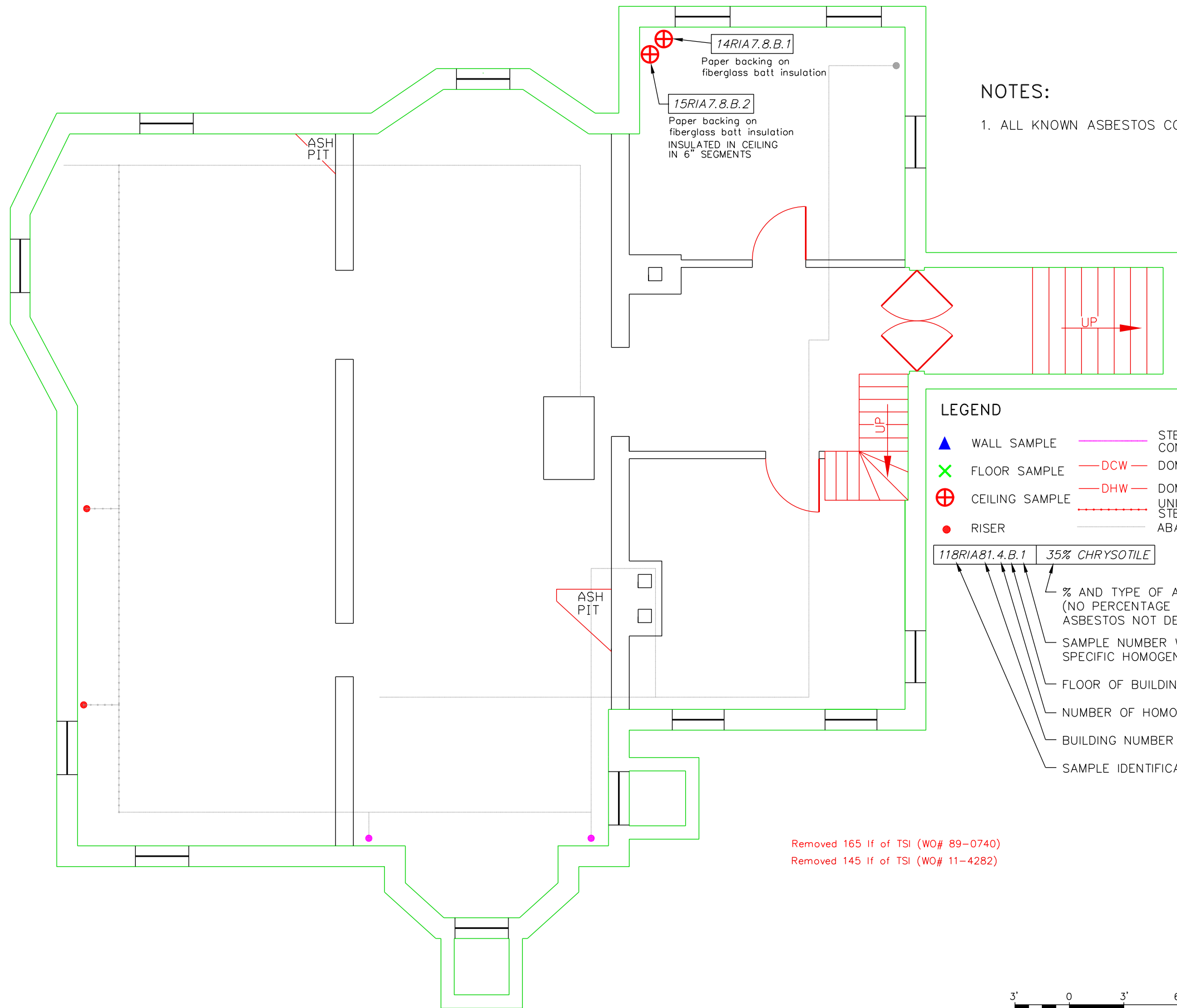
Date: 1/6/1997  
 Inspectors: S. Lynn, J. Romine

Type of Material	Suspect ACBM	Sample No.	*Quantity	Condition	Friable	Physical	Air	Vibration	Water	Hazard Rank
Paper backing on fiberglass batt insulation	Yes	15RIA 7.8.B.2 - ND	30 sf	Good	No	Low	Low	Low	Low	1
Plaster	Yes	11RIA 7.5.1.2 - ND	1,800 sf	Good	No	Low	Low	Low	Low	1
Plaster	Yes	9RIA 7.5.2.1 - ND	2,135 sf	Good	No	Low	Low	Low	Low	1
Tan CBM	Yes	1RIA 7.1.2.1 - ND	35 lf	Good	No	Low	Low	Low	Low	1
Tan CBM	Yes	4RIA 7.1.2.2-A - ND	35 lf	Good	No	Low	Low	Low	Low	1
White and tan linoleum	Yes	12RIA 7.7.1.1A - ND	600 sf	Good	No	Moderate	Low	Low	Low	2
White and tan linoleum	Yes	13RIA 7.7.1.2-A - ND	600 sf	Good	No	Moderate	Low	Low	Low	2

**Notes:**

ACBM = Asbestos-containing building material    psi = Pounds per square inch  
 CH = Chrysotile    TSI = Thermal system insulation  
 AM = Amosite    FT = Floor tile  
 CR = Crocidolite    CT = Ceiling tile  
 DCW = Domestic cold water    CBM = Cove base molding  
 DHW = Domestic hot water    lf = Linear feet  
 ND = Not detected    sf = Square feet  
 Dup = Duplicate    NA = No sample collected

\*Quantities listed are totals per homogeneous area, unless otherwise indicated in the description of the material.



**NOTES:**

- 1. ALL KNOWN ASBESTOS CONTAINING INSULATION REMOVED.

**LEGEND**

- ▲ WALL SAMPLE
- ✕ FLOOR SAMPLE
- ⊕ CEILING SAMPLE
- RISER
- STEAM SERVICE (ASBESTOS CONTAINING MATERIAL)
- DCW — DOMESTIC COLD WATER
- DHW — DOMESTIC HOT WATER
- UNINSULATED STEAM SERVICE
- ABATED TSI LINE

118RIA81.4.B.1 35% CHRYSOTILE

% AND TYPE OF ASBESTOS FOUND  
(NO PERCENTAGE NUMBER INDICATES ASBESTOS NOT DETECTED)

SAMPLE NUMBER WITHIN SPECIFIC HOMOGENEOUS AREA

FLOOR OF BUILDING

NUMBER OF HOMOGENEOUS AREA

BUILDING NUMBER

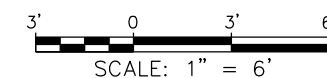
SAMPLE IDENTIFICATION NUMBER

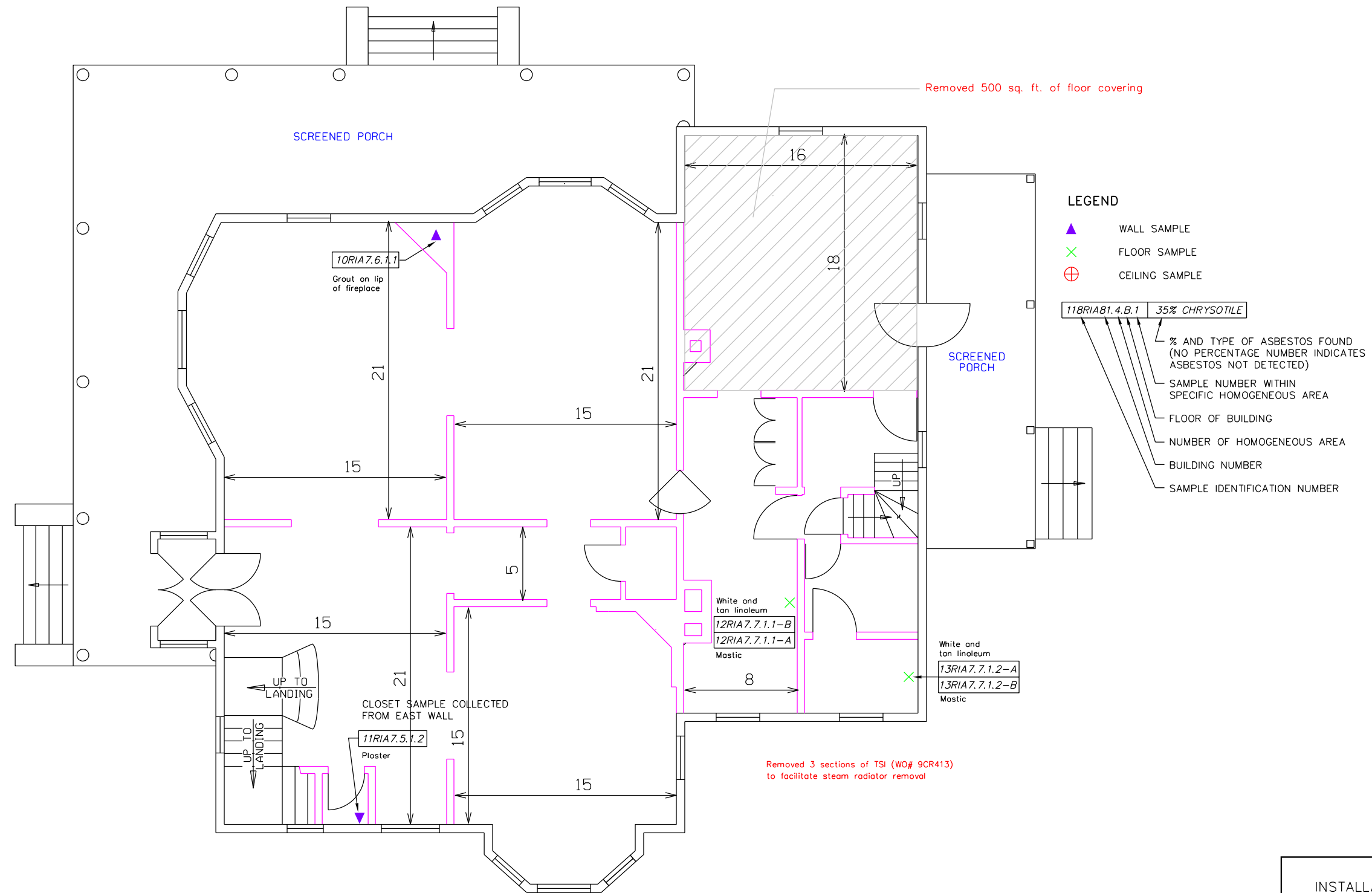
Removed 165 lf of TSI (WO# 89-0740)  
Removed 145 lf of TSI (WO# 11-4282)

REVISION DATE: SEPTEMBER 2014

ROCK ISLAND ARSENAL  
INSTALLATION-WIDE ASBESTOS SURVEY  
PHASE II - QUADRANT 1  
ROCK ISLAND, ILLINOIS

FIGURE 7-FB  
BUILDING 007 - BASEMENT  
SAMPLE LOCATIONS AND ASBESTOS  
CONTAINING HOMOGENOUS AREAS

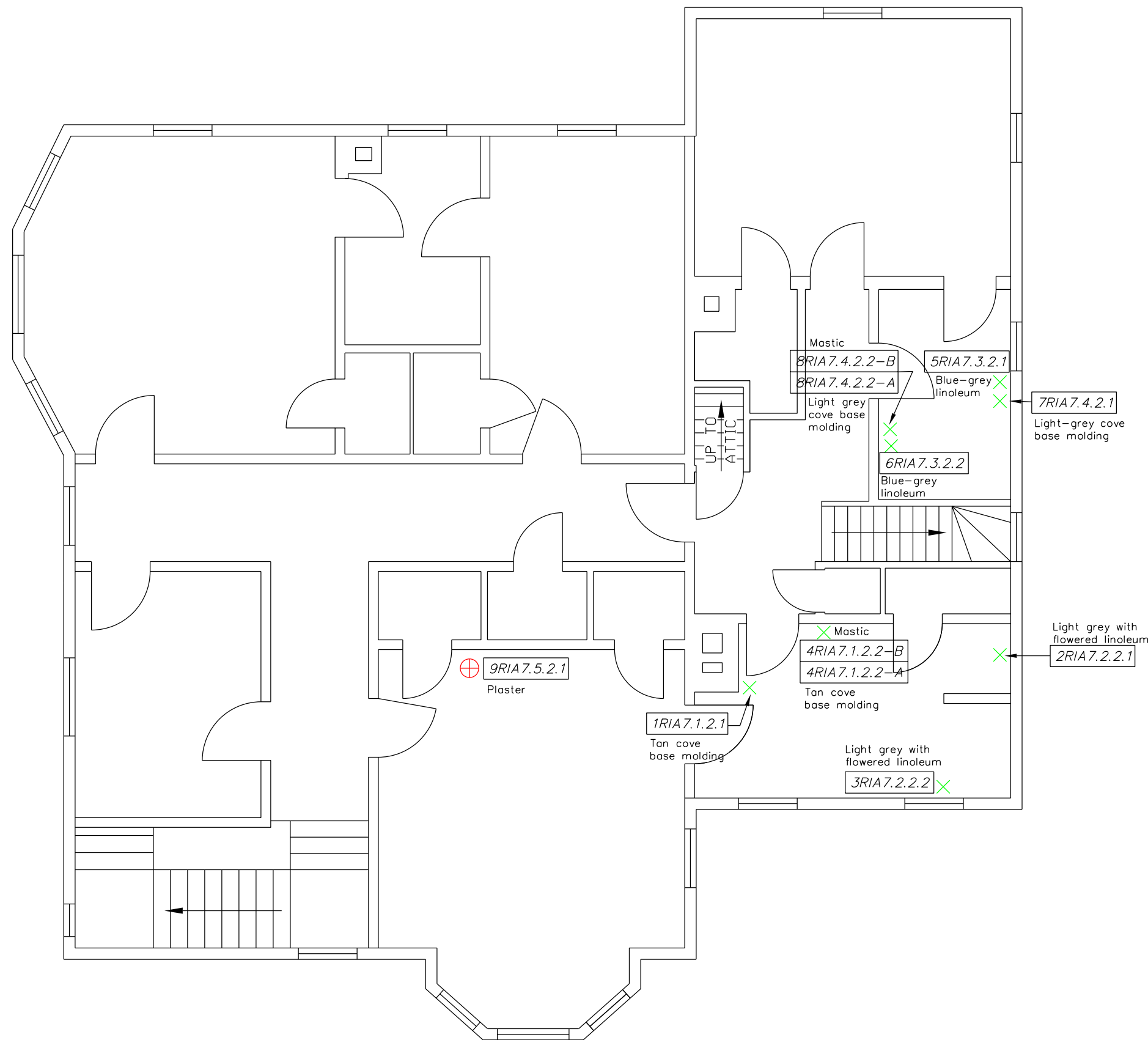







REVISION DATE: SEPTEMBER 2014

ROCK ISLAND ARSENAL  
INSTALLATION-WIDE ASBESTOS SURVEY  
PHASE II - QUADRANT 1  
ROCK ISLAND, ILLINOIS

FIGURE 7-F1  
BUILDING 007 - FIRST FLOOR  
SAMPLE LOCATIONS AND ASBESTOS  
CONTAINING HOMOGENOUS AREAS

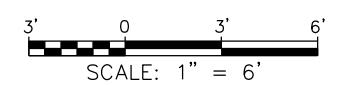


**LEGEND**

-  WALL SAMPLE
-  FLOOR SAMPLE
-  CEILING SAMPLE

**118RIA81.4.B.1 35% CHRYSOTILE**

- ↳ % AND TYPE OF ASBESTOS FOUND (NO PERCENTAGE NUMBER INDICATES ASBESTOS NOT DETECTED)
- ↳ SAMPLE NUMBER WITHIN SPECIFIC HOMOGENEOUS AREA
- ↳ FLOOR OF BUILDING
- ↳ NUMBER OF HOMOGENEOUS AREA
- ↳ BUILDING NUMBER
- ↳ SAMPLE IDENTIFICATION NUMBER



REVISION DATE: SEPTEMBER 2014

ROCK ISLAND ARSENAL  
 INSTALLATION-WIDE ASBESTOS SURVEY  
 PHASE II - QUADRANT 1  
 ROCK ISLAND, ILLINOIS

FIGURE 7-F2  
 BUILDING 007 - SECOND FLOOR  
 SAMPLE LOCATIONS AND ASBESTOS  
 CONTAINING HOMOGENEOUS AREAS

**PRC** ENVIRONMENTAL MANAGEMENT, INC.