

SAMPLE AND BUILDING INSPECTION REPORT

Client: Rock Island, Installation-wide Asbestos Survey, Phase VI, Quadrants 1, 2, 3, and 4

Location: 70

Date: 2/7/1997

Building Use/Description: Ltc./Mj housing

Inspectors: S. Lynn, W. Kosco

AVG. # People/Hr: 2

AVG. # Hrs/Day: 14

AVG. # Days/Year: 350

AVG. # Person Hrs/Year: 9800

Type of Material	Suspect ACBM	Sample No.	*Quantity	Condition	Friable	Physical	Air	Vibration	Water	Hazard Rank
Fragments of MAG TSI in crawl space	Yes	494RIA 70.1.B.1 - 40% AM, 20% CH, 1% CR		Poor	Yes	Low	High	Low	Moderate	7
TSI on DCW line	No	NA -			No					

Notes:

ACBM = Asbestos-containing building material

CH = Chrysotile

AM = Amosite

CR = Crocidolite

DCW = Domestic cold water

DHW = Domestic hot water

ND = Not detected

Dup = Duplicate

psi = Pounds per square inch

TSI = Thermal system insulation

FT = Floor tile

CT = Ceiling tile

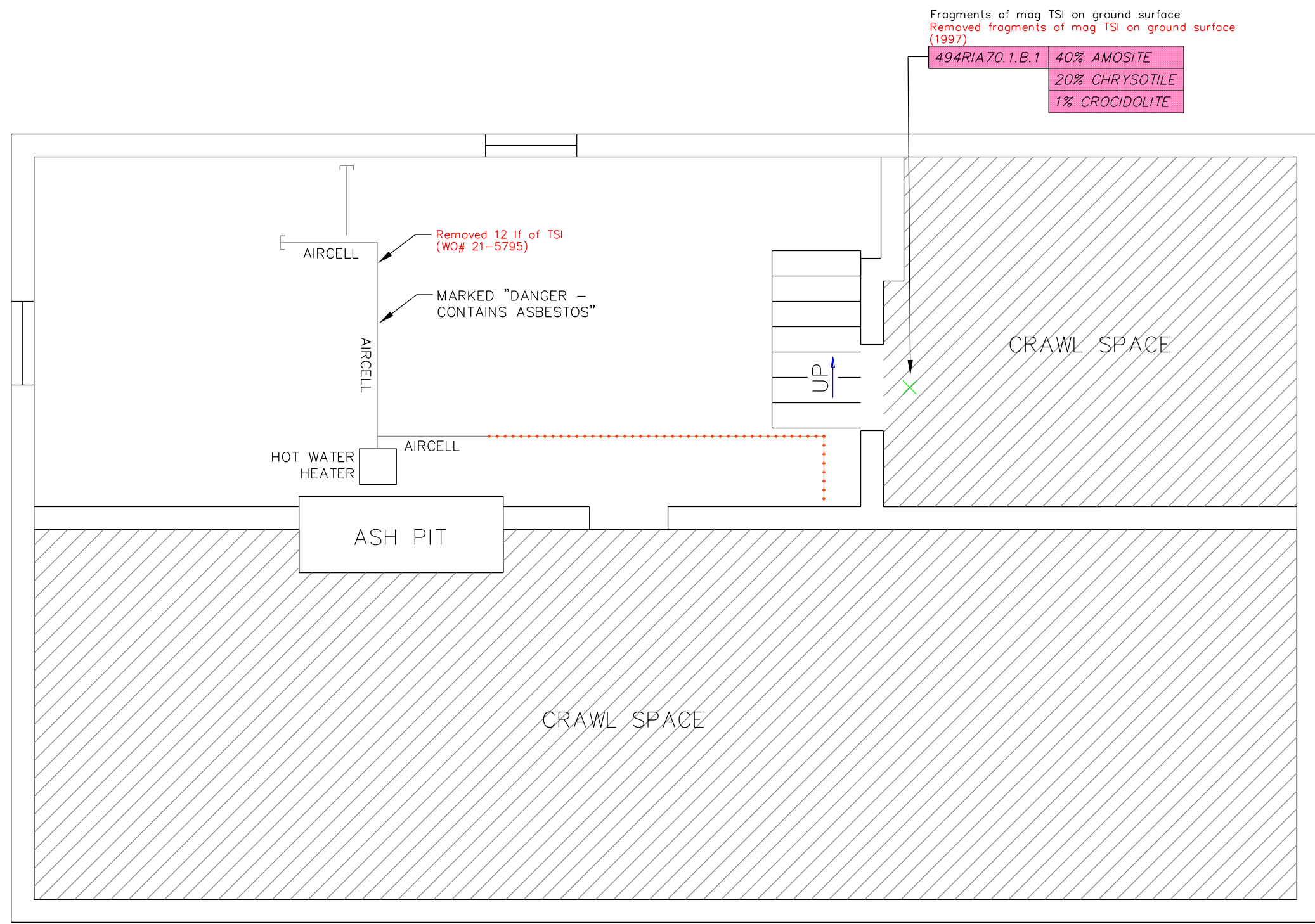
CBM = Cove base molding

lf = Linear feet

sf = Square feet

NA = No sample collected

*Quantities listed are totals per homogeneous area, unless otherwise indicated in the description of the material.



LEGEND

- ▲ WALL SAMPLE
- ✕ FLOOR SAMPLE
- ⊕ CEILING SAMPLE
- DCW — DOMESTIC COLD WATER
- DHW — DOMESTIC HOT WATER
- ⋯ UNINSULATED OR FIBERGLASS PIPING
- ABANDONED OR DEAD END
- ABATED TSI
- RISER
- ▨ ASBESTOS-CONTAINING BUILDING MATERIAL
- ▩ REMOVED ASBESTOS-CONTAINING BUILDING MATERIAL

ALL SHADED BOXES INDICATE ASBESTOS-CONTAINING MATERIAL

494RIA70.1.B.1 35% CHRYSOTILE

% AND TYPE OF ASBESTOS FOUND (NO PERCENTAGE NUMBER INDICATES ASBESTOS NOT DETECTED)

SAMPLE NUMBER WITHIN SPECIFIC HOMOGENEOUS AREA

FLOOR OF BUILDING

NUMBER OF HOMOGENEOUS AREA

BUILDING NUMBER

SAMPLE IDENTIFICATION NUMBER

NOTE

ALL TSI (PIPE COVERING) CONTAINS ASBESTOS UNLESS OTHERWISE IDENTIFIED.

ABBREVIATIONS

FG = FIBERGLASS
 MAG = MAGNESIUM
 TSI = THERMAL SYSTEM INSULATION

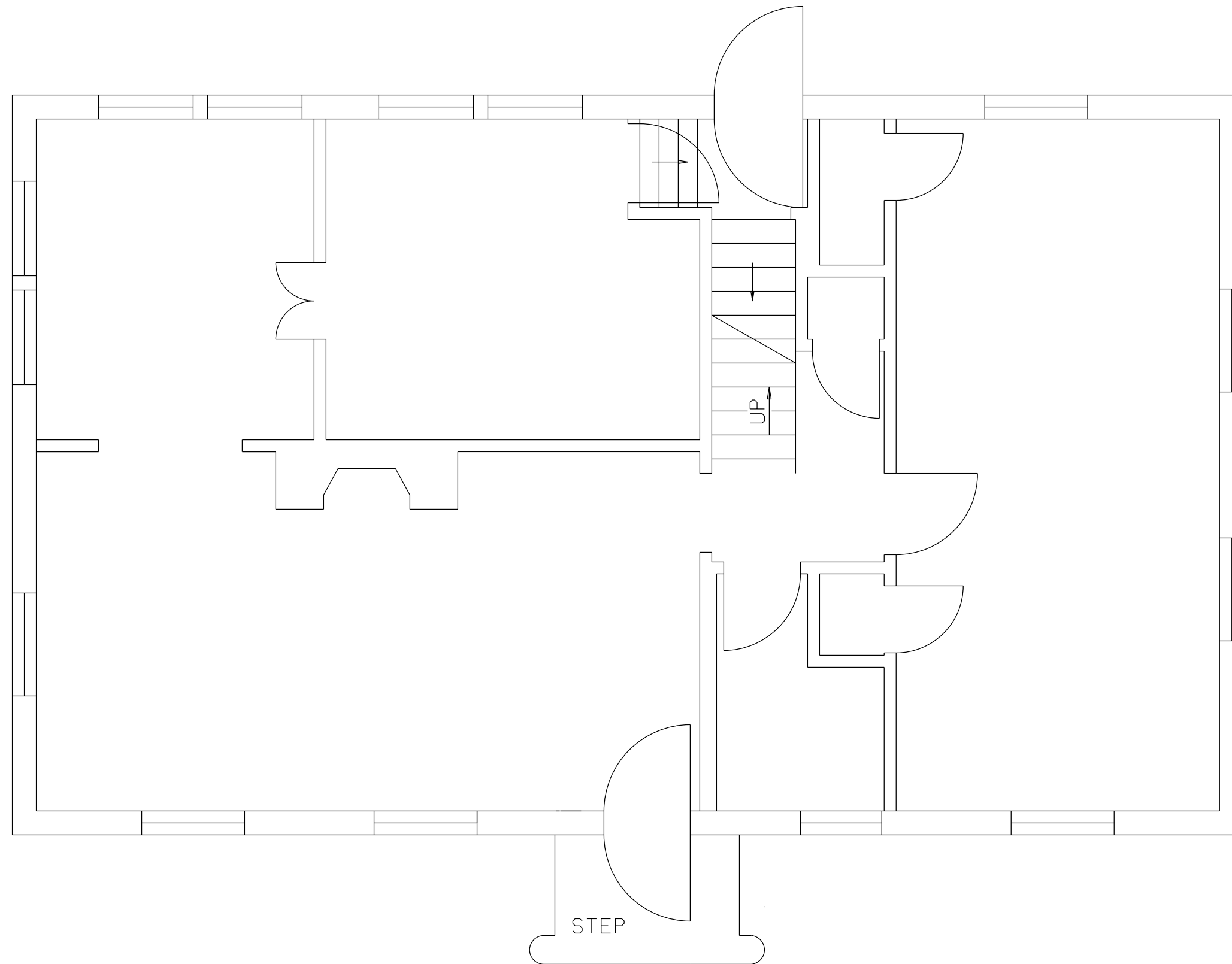


REVISION DATE: SEPTEMBER 2014

ROCK ISLAND ARSENAL
 INSTALLATION-WIDE ASBESTOS SURVEY
 PHASE II - QUADRANT 1
 ROCK ISLAND, ILLINOIS

FIGURE 70-FB
 BUILDING 070 - BASEMENT
 SAMPLE LOCATIONS AND ASBESTOS
 CONTAINING HOMOGENEOUS AREAS

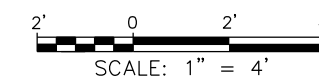
PRC ENVIRONMENTAL MANAGEMENT, INC.



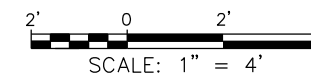
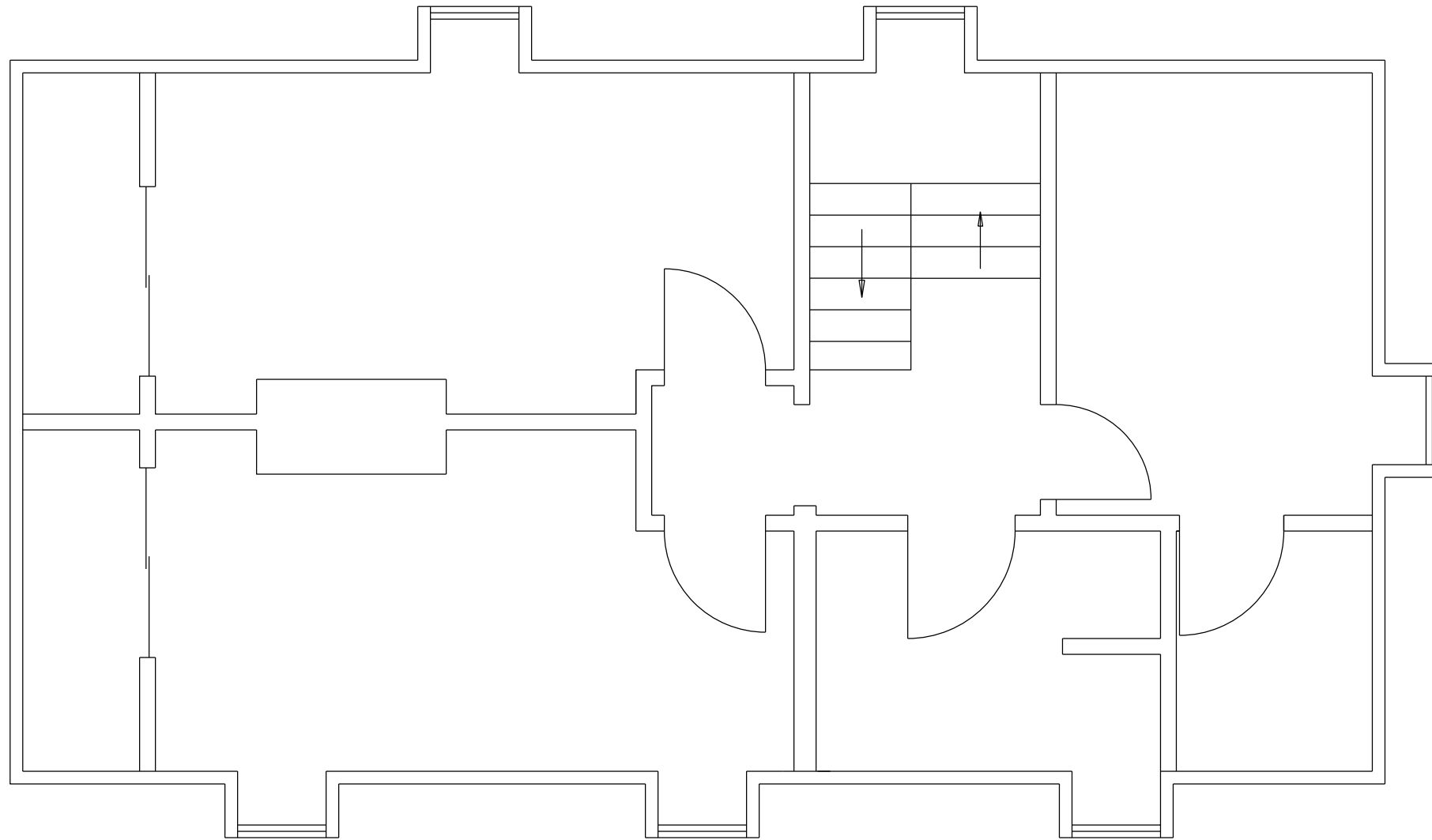
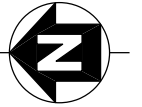
REVISION DATE: SEPTEMBER 2014

ROCK ISLAND ARSENAL
INSTALLATION-WIDE ASBESTOS SURVEY
PHASE II - QUADRANT 1
ROCK ISLAND, ILLINOIS

FIGURE 70-F1
BUILDING 070 - FIRST FLOOR
SAMPLE LOCATIONS AND ASBESTOS
CONTAINING HOMOGENOUS AREAS



PRC ENVIRONMENTAL MANAGEMENT, INC.



REVISION DATE: SEPTEMBER 2014

ROCK ISLAND ARSENAL
INSTALLATION-WIDE ASBESTOS SURVEY
PHASE II - QUADRANT 1
ROCK ISLAND, ILLINOIS

FIGURE 70-F2
BUILDING 070 - SECOND FLOOR
SAMPLE LOCATIONS AND ASBESTOS
CONTAINING HOMOGENOUS AREAS

PRC ENVIRONMENTAL MANAGEMENT, INC.