

SAMPLE AND BUILDING INSPECTION REPORT

Client: Rock Island, Installation-wide Asbestos Survey, Phase VI, Quadrants 1, 2, 3, and 4

Location: 2
 Building Use/Description: Colonel housing
 AVG. # People/Hr: 4
 AVG. # Hrs/Day: 14
 AVG. # Days/Year: 340
 AVG. # Person Hrs/Year: 19040

Date: 1/7/1997
 Inspectors: S. Lynn, J. Romine

Type of Material	Suspect ACBM	Sample No.	*Quantity	Condition	Friable	Physical	Air	Vibration	Water	Hazard Rank
Green stained glass linoleum	Yes	50RIA 2.5.2.1-A - ND	50 sf	Good	No	Moderate	Low	Low	Low	2
Inner plaster layer	Yes	53RIA 2.4.2.3-B - ND		Good	No	Low	Low	Low	Low	1
Mastic	Yes	43RIA 2.1.1.1-B - ND	520 sf	Good	No	Moderate	Low	Low	Low	2
Mastic	Yes	47RIA 2.3.1.1-B - ND	70 sf	Good	No	Moderate	Low	Low	Low	2
Mastic	Yes	50RIA 2.5.2.1-B - ND	50 sf	Good	No	Moderate	Low	Low	Low	2
Olive green linoleum	Yes	46RIA 2.2.1.1 - ND	50 sf	Good	No	Moderate	Low	Low	Low	2
Plaster	Yes	48RIA 2.4.B.1 - ND		Good	No	Low	Low	Low	Low	1
Plaster	Yes	49RIA 2.4.1.2 - ND		Good	No	Low	Low	Low	Low	1
Plaster	Yes	53RIA 2.4.2.3-A - ND		Good	No	Low	Low	Low	Low	1
Tan terra cotta linoleum	Yes	52RIA 2.7.2.1 - 10% CH	50 sf	Good	No	Moderate	Low	Low	Low	2
Tan/white square linoleum	Yes	43RIA 2.1.1.1-A - ND	520 sf	Good	No	Moderate	Low	Low	Low	2
Tan/white square linoleum	Yes	44RIA 2.1.1.2 - ND	520 sf	Good	No	Moderate	Low	Low	Low	2

Notes:

ACBM = Asbestos-containing building material psi = Pounds per square inch
 CH = Chrysotile TSI = Thermal system insulation
 AM = Amosite FT = Floor tile
 CR = Crocidolite CT = Ceiling tile
 DCW = Domestic cold water CBM = Cove base molding
 DHW = Domestic hot water lf = Linear feet
 ND = Not detected sf = Square feet
 Dup = Duplicate NA = No sample collected

*Quantities listed are totals per homogeneous area, unless otherwise indicated in the description of the material.

SAMPLE AND BUILDING INSPECTION REPORT

Client: Rock Island, Installation-wide Asbestos Survey, Phase VI, Quadrants 1, 2, 3, and 4

Location: 2
 Building Use/Description: Colonel housing
 AVG. # People/Hr: 4
 AVG. # Hrs/Day: 14
 AVG. # Days/Year: 340
 AVG. # Person Hrs/Year: 19040

Date: 1/7/1997
 Inspectors: S. Lynn, J. Romine

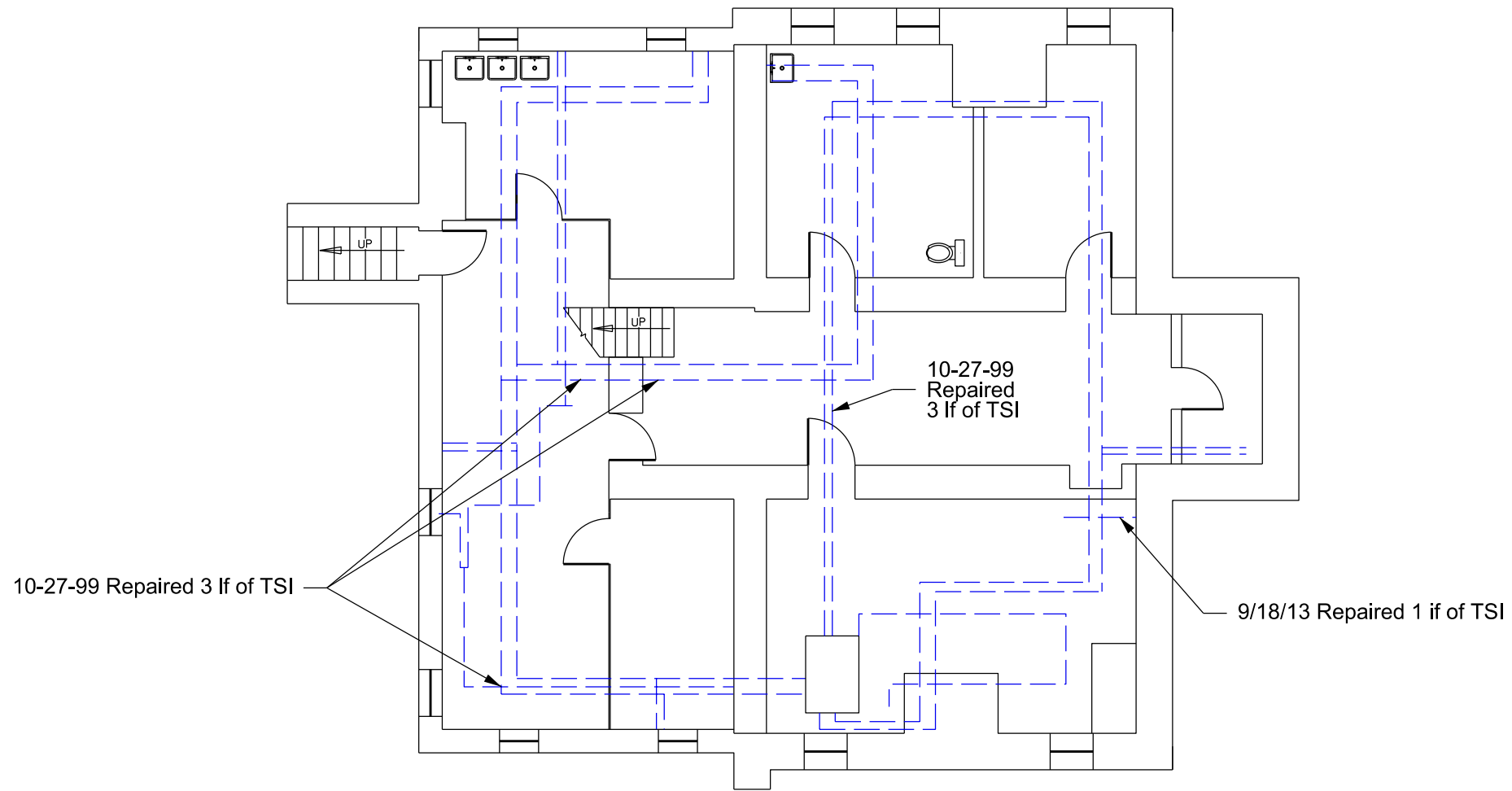
Type of Material	Suspect ACBM	Sample No.	*Quantity	Condition	Friable	Physical	Air	Vibration	Water	Hazard Rank
Tan/white square linoleum	Yes	45RIA 2.1.1.3 - ND	520 sf	Good	No	Moderate	Low	Low	Low	2
White hexagonal linoleum	Yes	51RIA 2.6.2.1 - ND	70 sf	Good	No	Moderate	Low	Low	Low	2
Yellow/tan brick square linoleum	Yes	47RIA 2.3.1.1-A - 10% CH	70 sf	Good	No	Moderate	Low	Low	Low	2

Notes:

ACBM = Asbestos-containing building material psi = Pounds per square inch
 CH = Chrysotile TSI = Thermal system insulation
 AM = Amosite FT = Floor tile
 CR = Crocidolite CT = Ceiling tile
 DCW = Domestic cold water CBM = Cove base molding
 DHW = Domestic hot water lf = Linear feet
 ND = Not detected sf = Square feet
 Dup = Duplicate NA = No sample collected

*Quantities listed are totals per homogeneous area, unless otherwise indicated in the description of the material.

Note:
 A significant amount of asbestos containing pipe insulation was removed when heating system was converted.
 Removal is not yet documented on this floor plan.

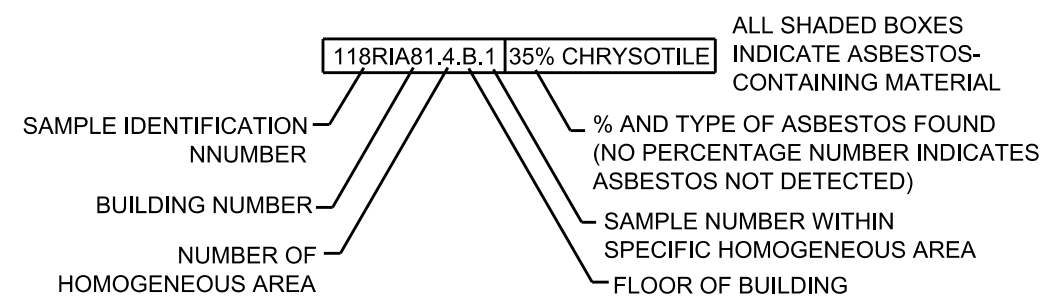
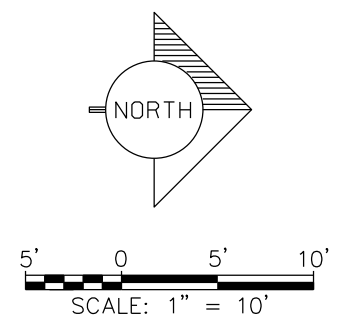


NOTE
 ALL TSI (PIPE COVERING) CONTAINS
 ASBESTOS UNLESS OTHERWISE IDENTIFIED.

ABBREVIATIONS
 FG = FIBERGLASS
 MAG = MAGNESIUM
 TSI = THERMAL SYSTEM INSULATION
 FT = FLOOR TILE
 sf = SQUARE FEET
 lf = LINEAR FEET

LEGEND

- | | |
|--|---|
| ▲ WALL SAMPLE | --- TSI CONTAINING ASBESTOS |
| ✕ FLOOR SAMPLE | --- HIGH PRESSURE STEAM |
| ⊕ CEILING SAMPLE | --- CONDENSATE |
| ■ PIPING SAMPLE | --- STEAM SERVICE |
| □ OTHER SAMPLE (AS DESCRIBED) | --- DOMESTIC COLD WATER |
| ● RISER | --- DOMESTIC HOT WATER |
| ▨ ASBESTOS-CONTAINING BUILDING MATERIAL | --- CIRCULATING WATER |
| ▧ ABATED ASBESTOS-CONTAINING BUILDING MATERIAL | --- UNINSULATED OR FIBERGLASS PIPING |
| | --- ABATED TSI |
| | ▨ ASSUMED ASBESTOS-CONTAINING BUILDING MATERIAL AREA
(NOTE: Assumption based on positive samples of similar building materials taken at corresponding locations in other building) |



REVISION DATE: SEPTEMBER 2014



ROCK ISLAND ARSENAL
 INSTALLATION-WIDE ASBESTOS SURVEY
 PHASE II - QUADRANT 1
 ROCK ISLAND, ILLINOIS

FIGURE 2 - FB
 BUILDING 002 - BASEMENT
 SAMPLE LOCATIONS AND ASBESTOS
 CONTAINING HOMOGENEOUS AREAS





LEGEND

- ▲ WALL SAMPLE
- ✕ FLOOR SAMPLE
- ⊕ CEILING SAMPLE
-  ASBESTOS-CONTAINING BUILDING MATERIAL
-  REMOVED ASBESTOS-CONTAINING BUILDING MATERIAL

NOTES: TSI = THERMAL SYSTEM INSULATION.
ALL TSI (PIPE COVERING) CONTAINS ASBESTOS UNLESS OTHERWISE IDENTIFIED.

ALL SHADED BOXES INDICATE ASBESTOS-CONTAINING MATERIAL

118RIA81.4.B.1 35% CHRYSOTILE

% AND TYPE OF ASBESTOS FOUND (NO PERCENTAGE NUMBER INDICATES ASBESTOS NOT DETECTED)

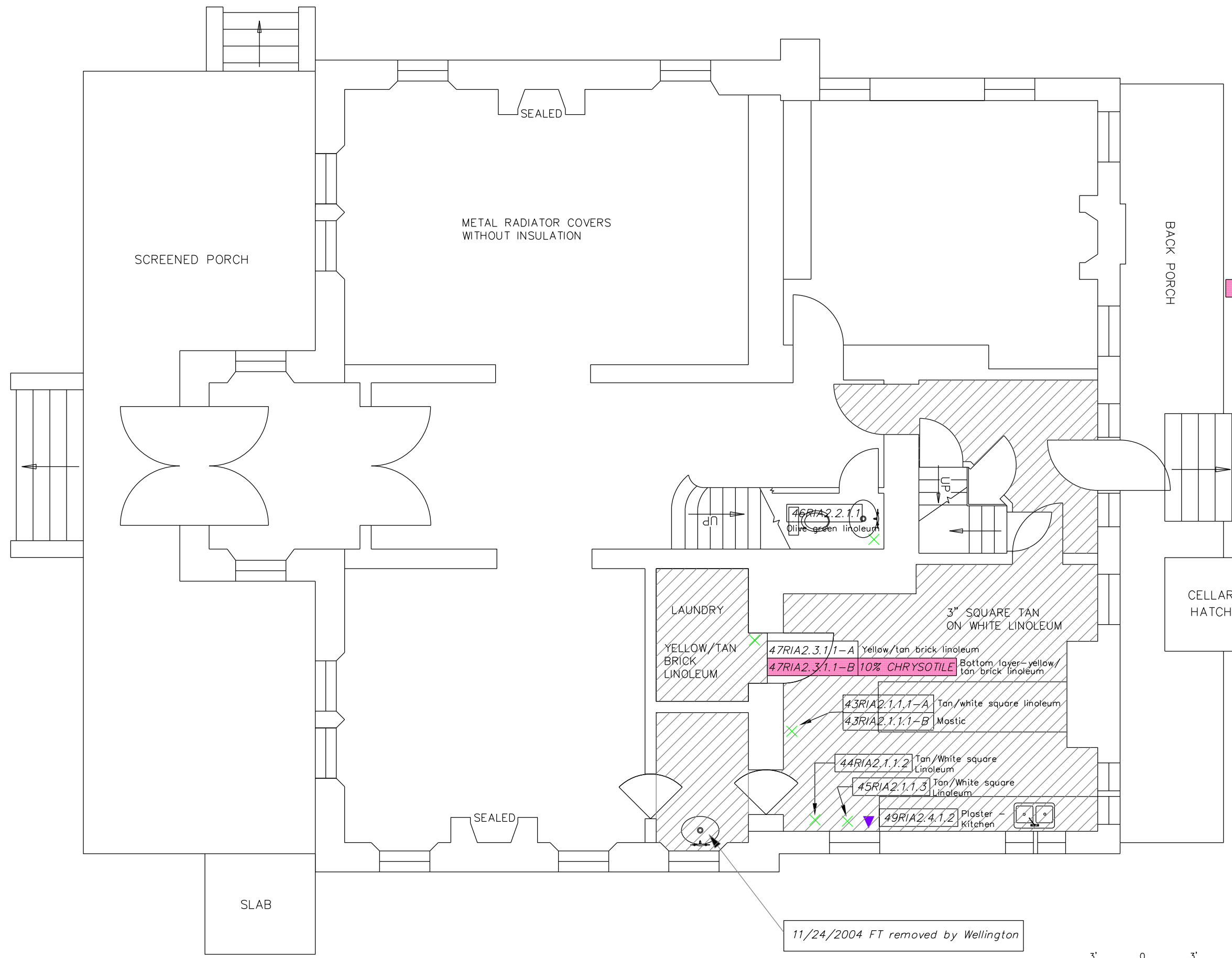
SAMPLE NUMBER WITHIN SPECIFIC HOMOGENEOUS AREA

FLOOR OF BUILDING

NUMBER OF HOMOGENEOUS AREA

BUILDING NUMBER

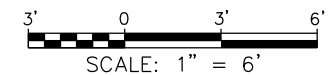
SAMPLE IDENTIFICATION NUMBER

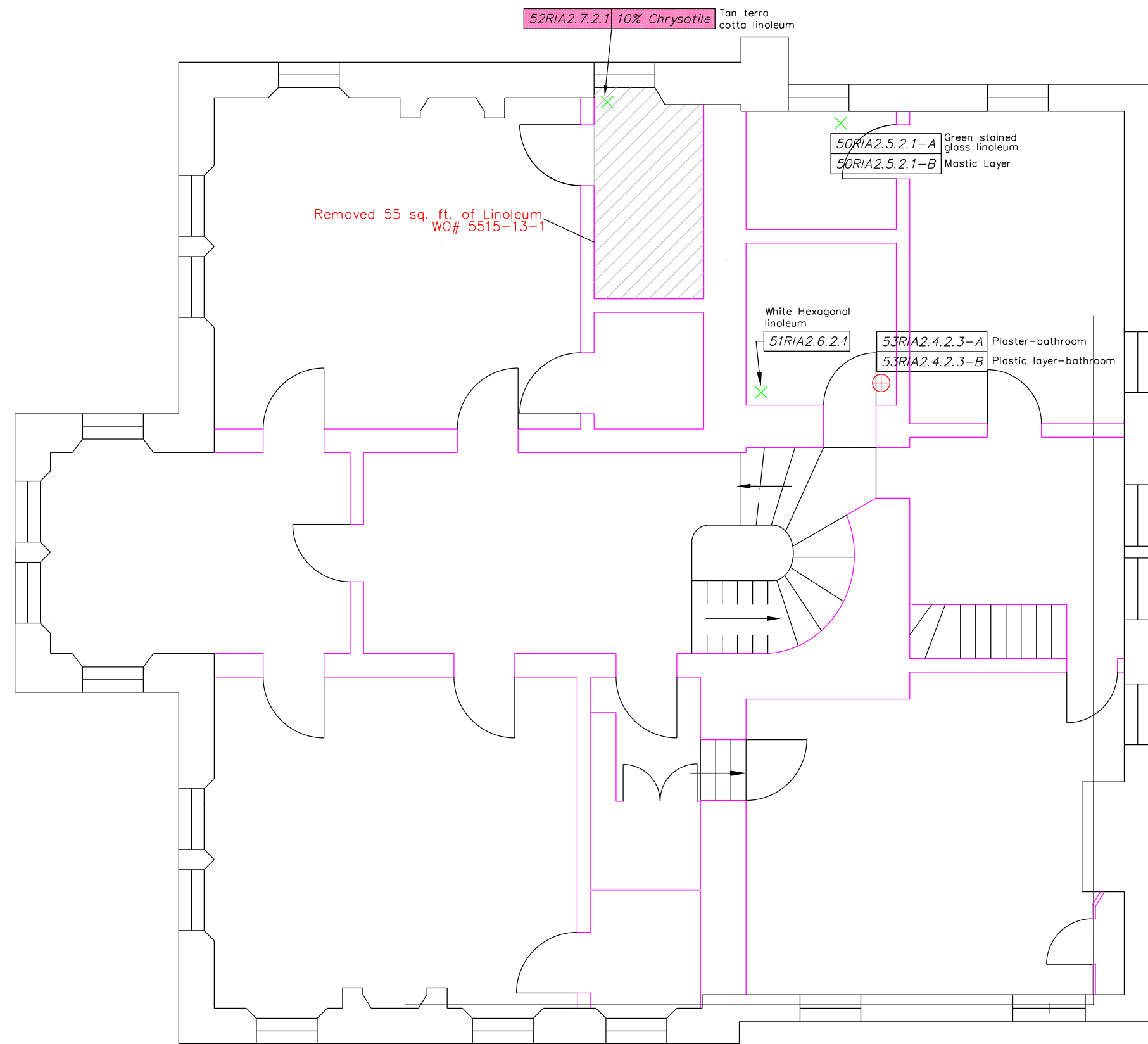


REVISION DATE: SEPTEMBER 2014

ROCK ISLAND ARSENAL
INSTALLATION-WIDE ASBESTOS SURVEY
PHASE II - QUADRANT 1
ROCK ISLAND, ILLINOIS

FIGURE 2-F1
BUILDING 002 - FIRST FLOOR
SAMPLE LOCATIONS AND ASBESTOS
CONTAINING HOMOGENOUS AREAS





LEGEND

- WALL SAMPLE
- FLOOR SAMPLE
- CEILING SAMPLE
- ASBESTOS-CONTAINING BUILDING MATERIAL
- REMOVED ASBESTOS-CONTAINING BUILDING MATERIAL AREA

118RIA81.4.B.1 35% CHRYSOTILE ALL SHADED BOXES INDICATE ASBESTOS-CONTAINING MATERIAL

% AND TYPE OF ASBESTOS FOUND (NO PERCENTAGE NUMBER INDICATES ASBESTOS NOT DETECTED)

SAMPLE NUMBER WITHIN SPECIFIC HOMOGENEOUS AREA

FLOOR OF BUILDING

NUMBER OF HOMOGENEOUS AREA

BUILDING NUMBER

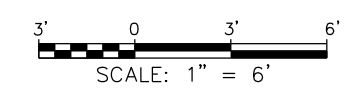
SAMPLE IDENTIFICATION NUMBER

NOTE

ALL TSI (PIPE COVERING) CONTAINS ASBESTOS UNLESS OTHERWISE IDENTIFIED.

ABBREVIATIONS

FG = FIBERGLASS
 MAG = MAGNESIUM
 TSI = THERMAL SYSTEM INSULATION



REVISION DATE: SEPTEMBER 2014

ROCK ISLAND ARSENAL
 INSTALLATION-WIDE ASBESTOS SURVEY
 PHASE II - QUADRANT 1
 ROCK ISLAND, ILLINOIS

FIGURE 2-F2
 BUILDING 002 - SECOND FLOOR
 SAMPLE LOCATIONS AND ASBESTOS
 CONTAINING HOMOGENOUS AREAS

PRC ENVIRONMENTAL MANAGEMENT, INC.