

N 12,118,500

N 3,571,500

US Army Corps of Engineers  
CENAO-REG  
West Central Field Office  
Received by JCR  
Date: September 30, 2013

Messick Point Federal  
Navigation Channel

85' CHANNEL  
BUFFER

SAV

SAV

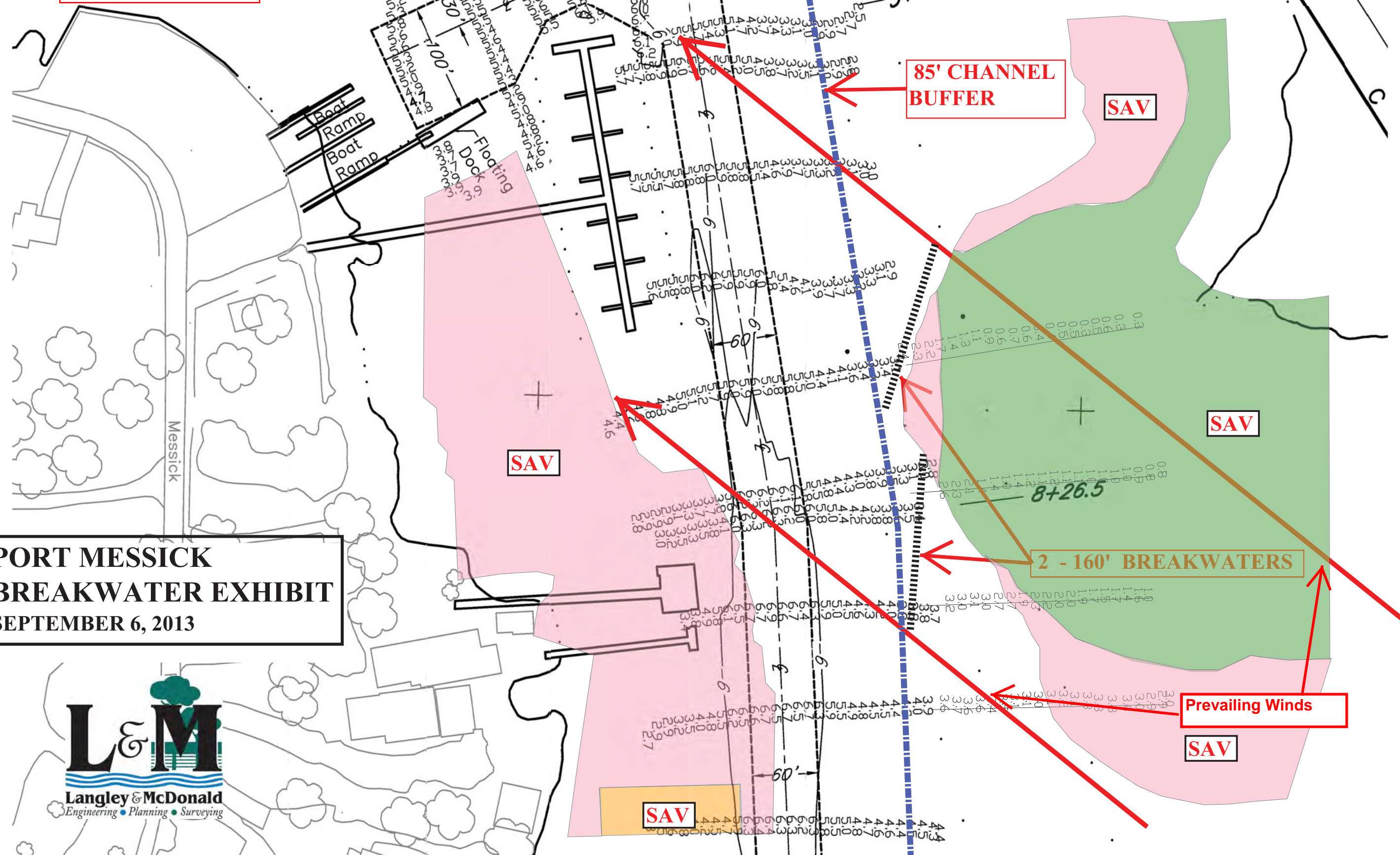
2 - 160' BREAKWATERS

Prevailing Winds

SAV

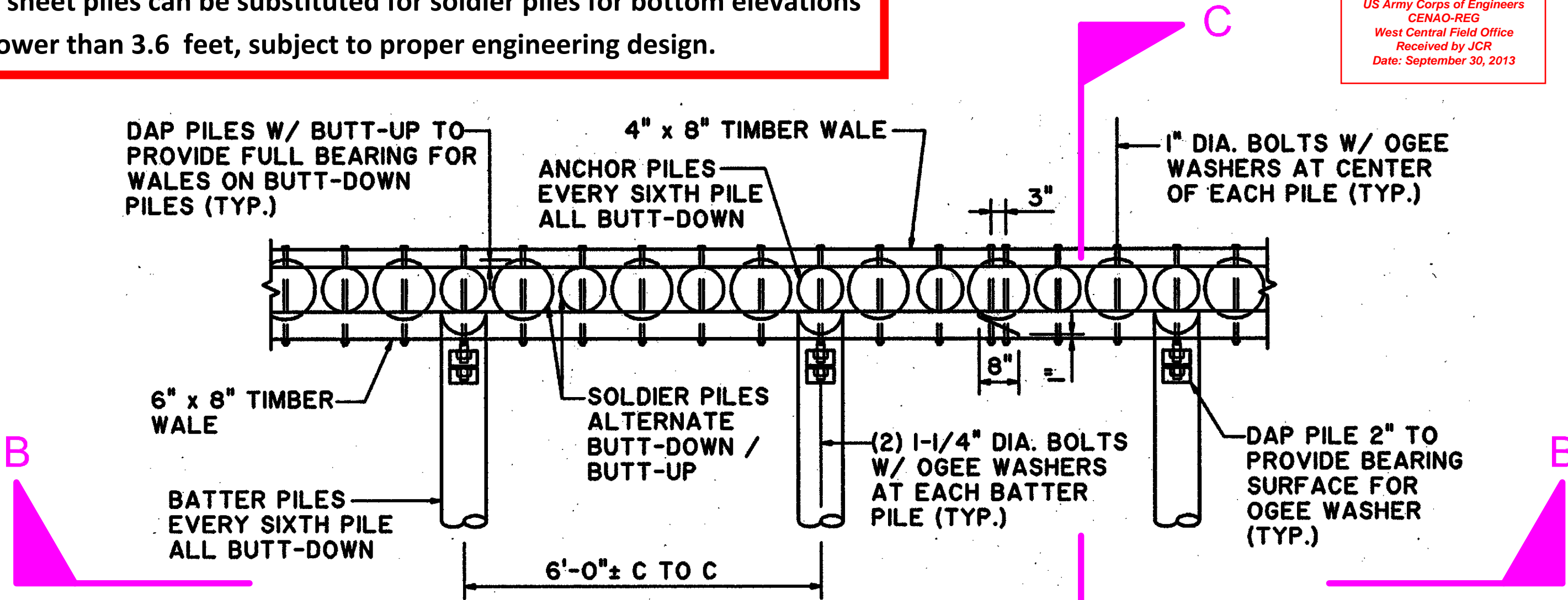
SAV

PORT MESSICK  
BREAKWATER EXHIBIT  
SEPTEMBER 6, 2013



Vinyl sheet piles can be substituted for soldier piles for bottom elevations shallower than 3.6 feet, subject to proper engineering design.

US Army Corps of Engineers  
 CENAO-REG  
 West Central Field Office  
 Received by JCR  
 Date: September 30, 2013

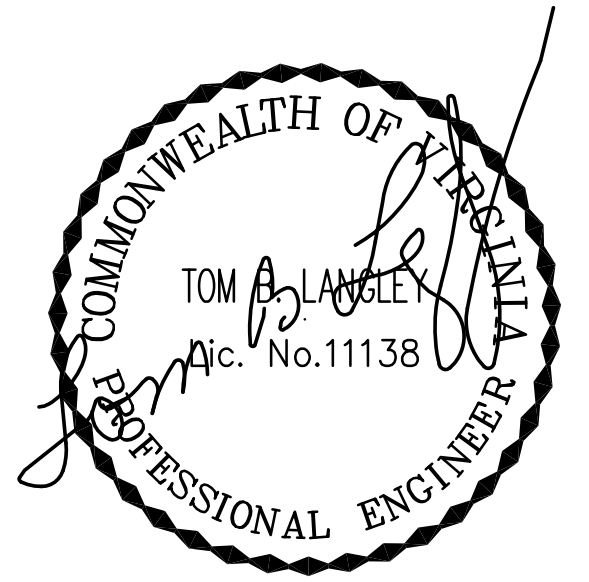


NOTE : ALL PILES SHALL HAVE A MINIMUM TIP CIRCUMFERENCE OF 28 INCHES, IN ACCORDANCE WITH ASTM D-25.



## WAVE SCREEN PLAN

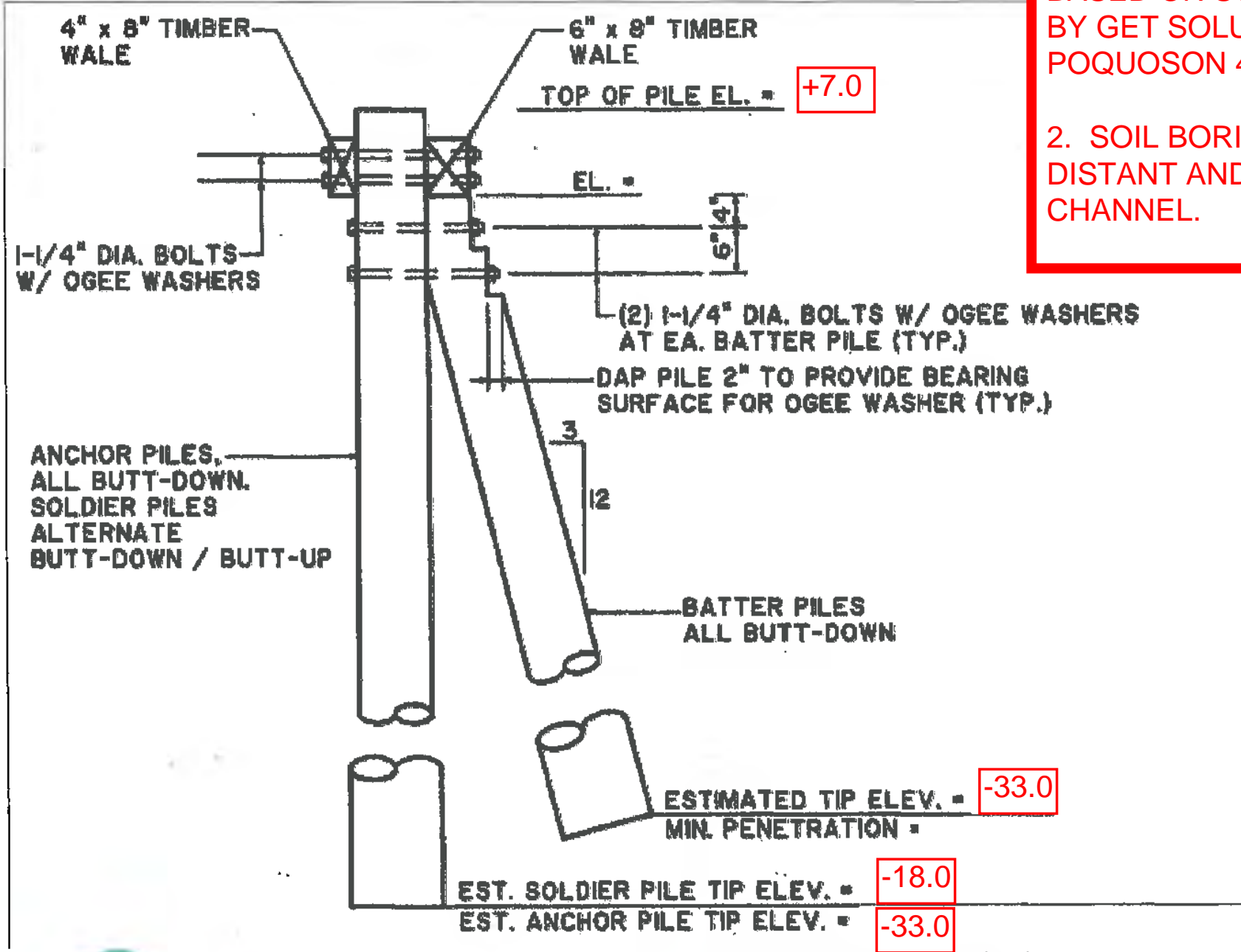
SCALE: 1/2" = 1'-0"



US Army Corps of Engineers  
 CENAO-REG  
 West Central Field Office  
 Received by JCR  
 Date: September 30, 2013

**NOTES:**

1. PILE LENGTHS ARE ESTIMATED AND BASED ON SOIL REPORT PERFORMED BY GET SOLUTIONS FOR CITY OF POQUOSON 4/25/2002
2. SOIL BORINGS WERE TAKEN 460' DISTANT AND ON OPPOSITE SIDE OF CHANNEL.

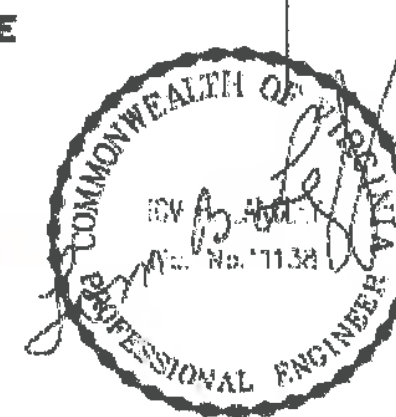


NOTE: ALL PILES SHALL HAVE A MINIMUM TIP CIRCUMFERENCE OF 26 INCHES, IN ACCORDANCE WITH ASTM D-25.



**WAVE SCREEN SECTION**

SCALE: 3/4" = 1'-0"



US Army Corps of Engineers  
CENAO-REG  
West Central Field Office  
Received by JCR  
Date: September 30, 2013

4" x 8" OUTSIDE TIMBER WALE  
AND 6" x 8" INSIDE TIMBER WALE

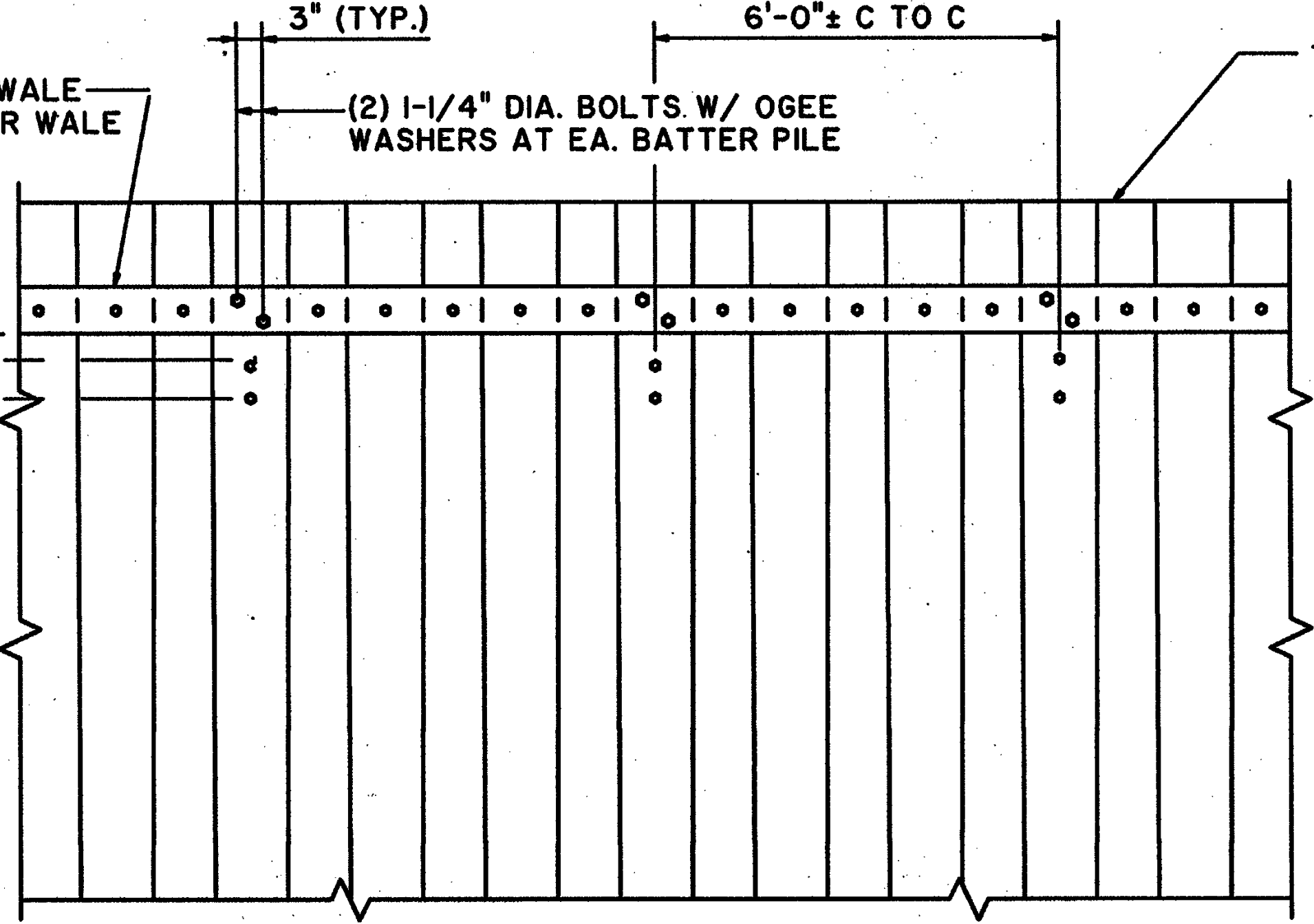
3" (TYP.)  
6'-0" ± C TO C  
(2) 1-1/4" DIA. BOLTS W/ OGEE  
WASHERS AT EA. BATTER PILE

TIMBER PILE

TOP OF PILE EL. =

EL. =

1-1/4" DIA. BOLTS W/  
OGEE WASHERS AT EA.  
BATTER PILE (TYP.)

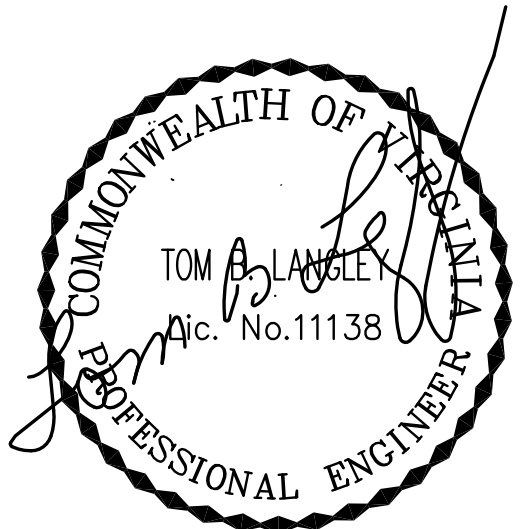


M.L.W.=0.0

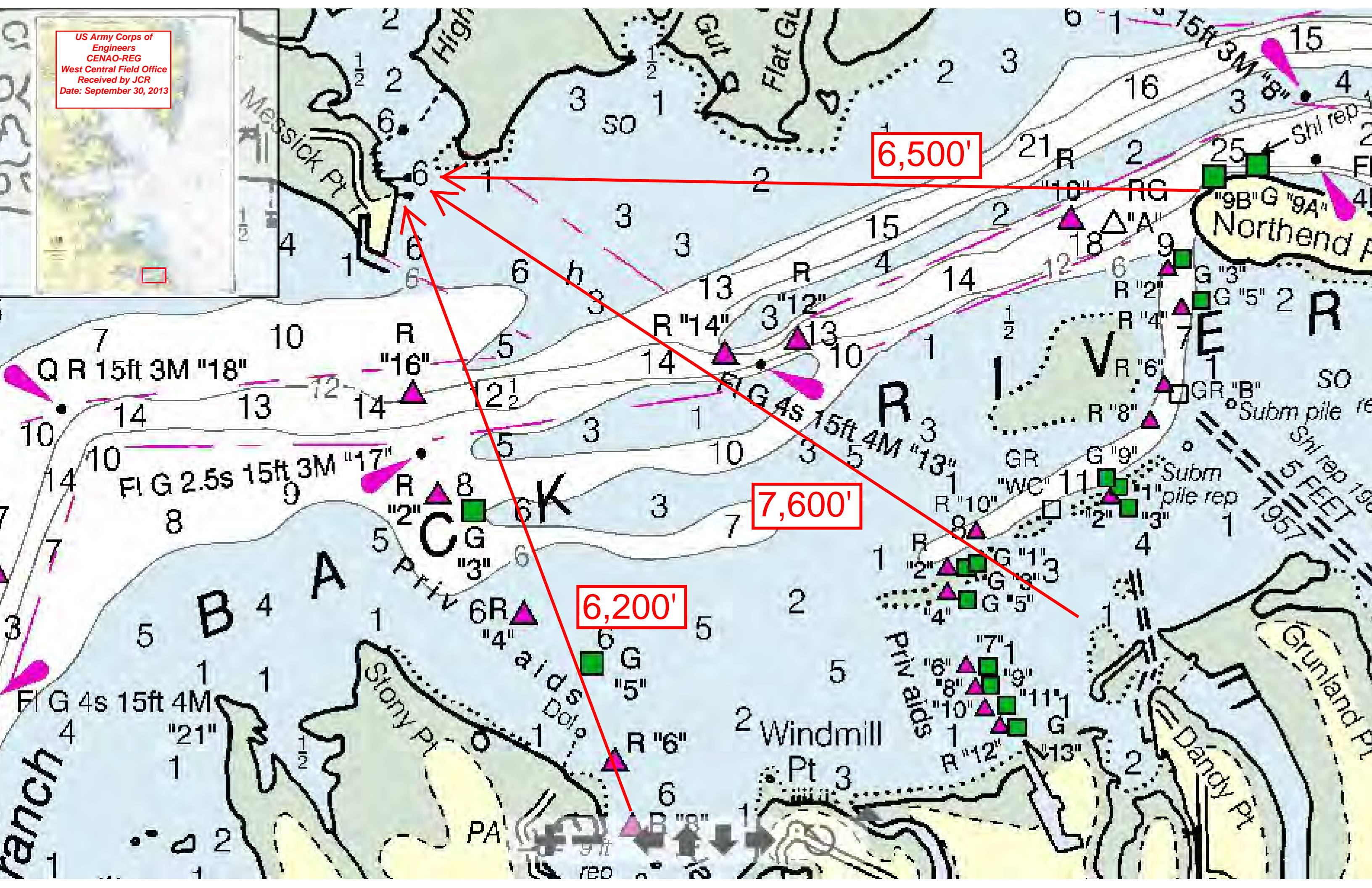


### WAVE SCREEN

SCALE: 1/2" = 1'-0"



US Army Corps of Engineers  
CENAO-REG  
West Central Field Office  
Received by JCR  
Date: September 30, 2013



US Army Corps of  
Engineers  
CENAO-REG  
West Central Field  
Office  
Received by JCR  
Date: November 1,  
2013

