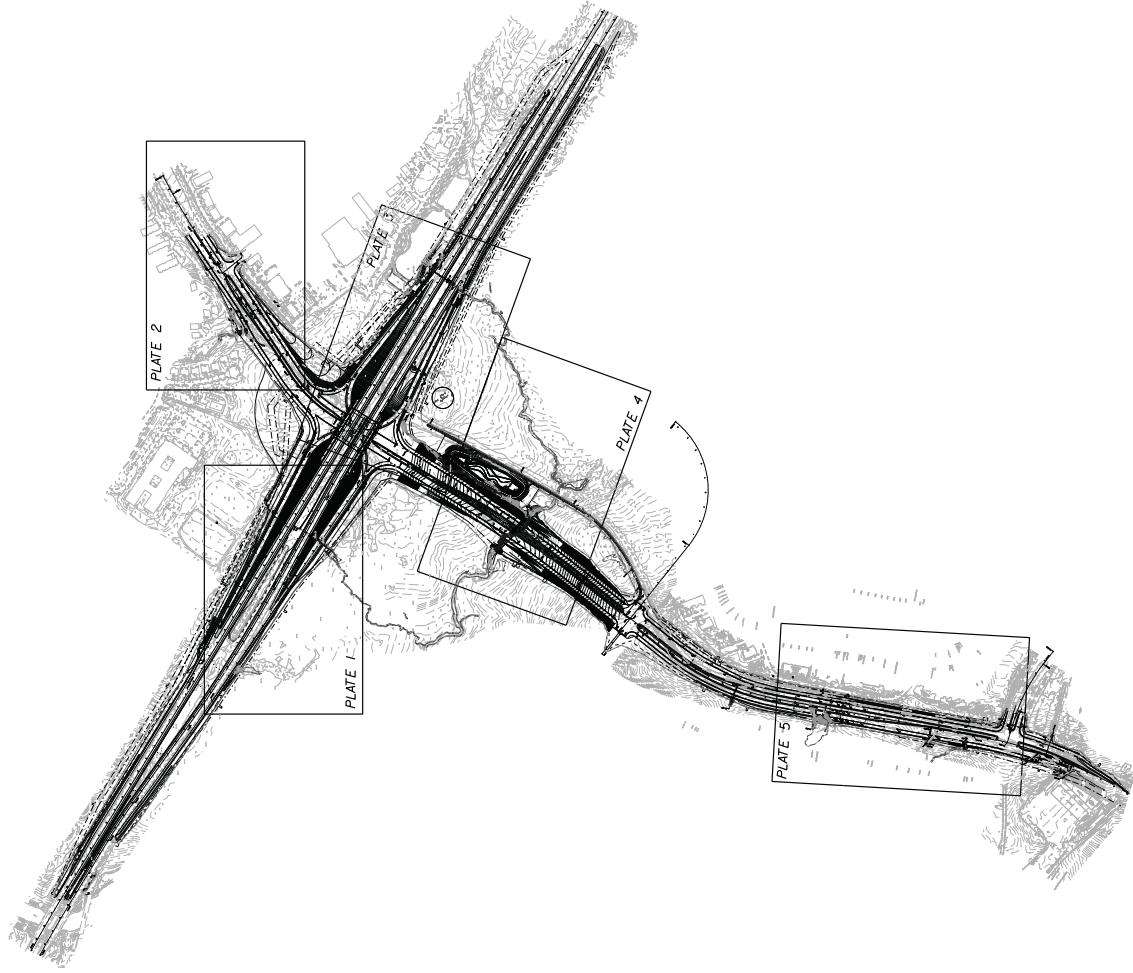


NOTES:

1. PROPOSED DESIGN EXISTING TOPOGRAPHIC AND PLANIMETRIC INFORMATION OBTAINED BY DEWBERRY.
2. THE WATERS OF THE U.S. (WOUS) INCLUDING WETLANDS, BOUNDARIES WERE DELINEATED BY DEWBERRY IN AUGUST AND DECEMBER OF 2008. THESE BOUNDARIES WERE SURVEYED BY DEWBERRY AND APPROVED BY THE UNITED STATES CORPS OF ENGINEERS (USACE) JURISDICTIONAL DETERMINATION (LDI)\*2009-081 ON 5 NOVEMBER 2009. THE JURISDICTIONAL DETERMINATION WAS AMENDED ON 27 FEBRUARY 2013 TO ACCOMMODATE ROADWAY DESIGN CHANGES.



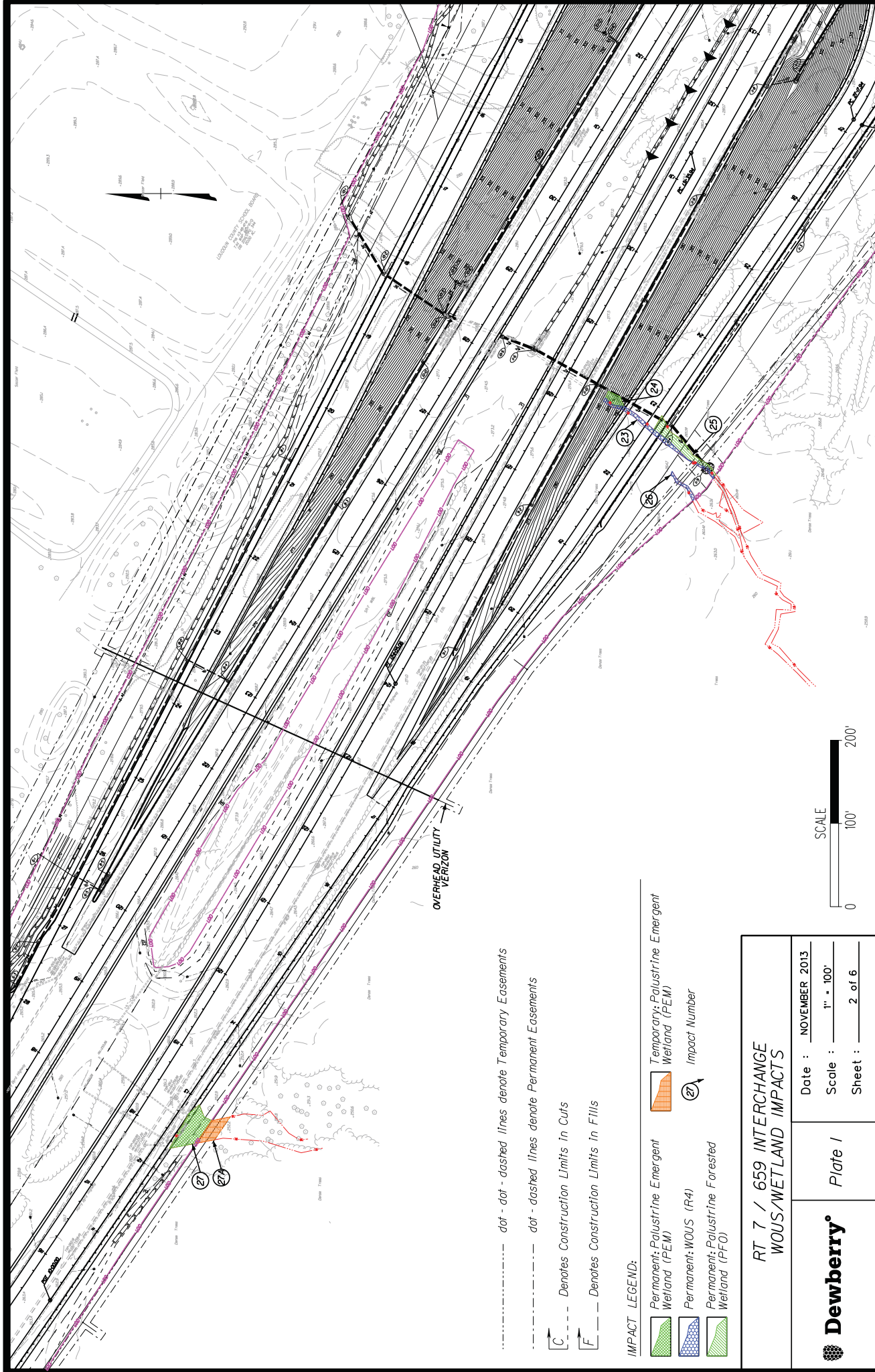
Impact Number	Type	Impact Description	Consentable Classification	Waters of the U.S. and Wetland Impacts				
				Waters Description	WUS Length (Linear Feet)	Area (Acres)	Area (Sq. Ft.)	
1	Permanent	See JPA Section 4	PTSM	A	2,259	0.031		
2	Permanent	See JPA Section 4	R3	A/B	56	0.019		
2A	Temporary	See JPA Section 4	R3	A/B	23	0.007		
3	Permanent	See JPA Section 4	AC	C	482	0.011		
4	Permanent	See JPA Section 4	PTSM	B	98	0.018		
5	Permanent	See JPA Section 4	PTSM	B	773	0.018		
6	Permanent	See JPA Section 4	P00W	B/A	565	0.013		
6A	Temporary	See JPA Section 4	P00W	B/A	317	0.007		
7	Permanent	See JPA Section 4	R3	B/C	32	0.008		
8	Temporary	See JPA Section 4	R3	B/C	35	0.010		
9	Permanent	See JPA Section 4	PTSM	M	429	0.006		
10	Permanent	See JPA Section D	PTSM	N	277	0.006		
11	Permanent	See JPA Section D	R3	N	82	0.009		
12	Temporary	See JPA Section 4	R3	N	30	0.008		
13	Permanent	See JPA Section 4	R3	NA	25	0.002		
14	Permanent	See JPA Section 4	PTSD	S	511	0.012		
15	Permanent	See JPA Section 4	PTSM	U	1,500	0.014		
16	Permanent	See JPA Section 4	PTSD	U	2,479	0.066		
17	Permanent	See JPA Section 4	PTSD	W	541	0.013		
18	Permanent	See JPA Section 4	PTSD	W	609	0.013		
19	Permanent	See JPA Section 4	PTSD	VA	3,757	0.086		
20	Permanent	See JPA Section 4	R3	E	307	0.154		
21	Temporary	See JPA Section 4	R3	E	197	0.011		
22	Permanent	See JPA Section 4	R4	F	346	0.012		
23	Permanent	See JPA Section 4	R4	G	104	0.011		
24	Permanent	See JPA Section 4	PTSD	GA	223	0.005		
25	Permanent	See JPA Section 4	PTSD	GA	223	0.005		
26	Permanent	See JPA Section 4	PTSD	GP	139	0.003		
27	Permanent	See JPA Section 4	PTSM	Z	1,197	0.027		
27A	Temporary	See JPA Section D	PTSM	Z	529	0.012		
28	Permanent	See JPA Section 4	EPH	B/E	151	0.011		
29	Permanent	See JPA Section 4	PTSD	CE	623	0.108		
30	Permanent	See JPA Section 4	R2	EE	39	0.008		
							4,791	0.156
							12,264	0.307
							563	0.013
							620	0.019
							1,231	0.149
							151	0.013
							329	0.012
							271	0.009
							0	0.000
							24,608	0.566
							15,759	0.361
							846	0.019
							1,008	0.009
							238	0.011

RT.71659 ROADWAY INTERCHANGE  
OVERALL WETLAND IMPACT MAP

LOUDOUN COUNTY, VIRGINIA

Date : NOVEMBER 2013  
Scale : 1" = 400'  
Sheet : 1 OF 6





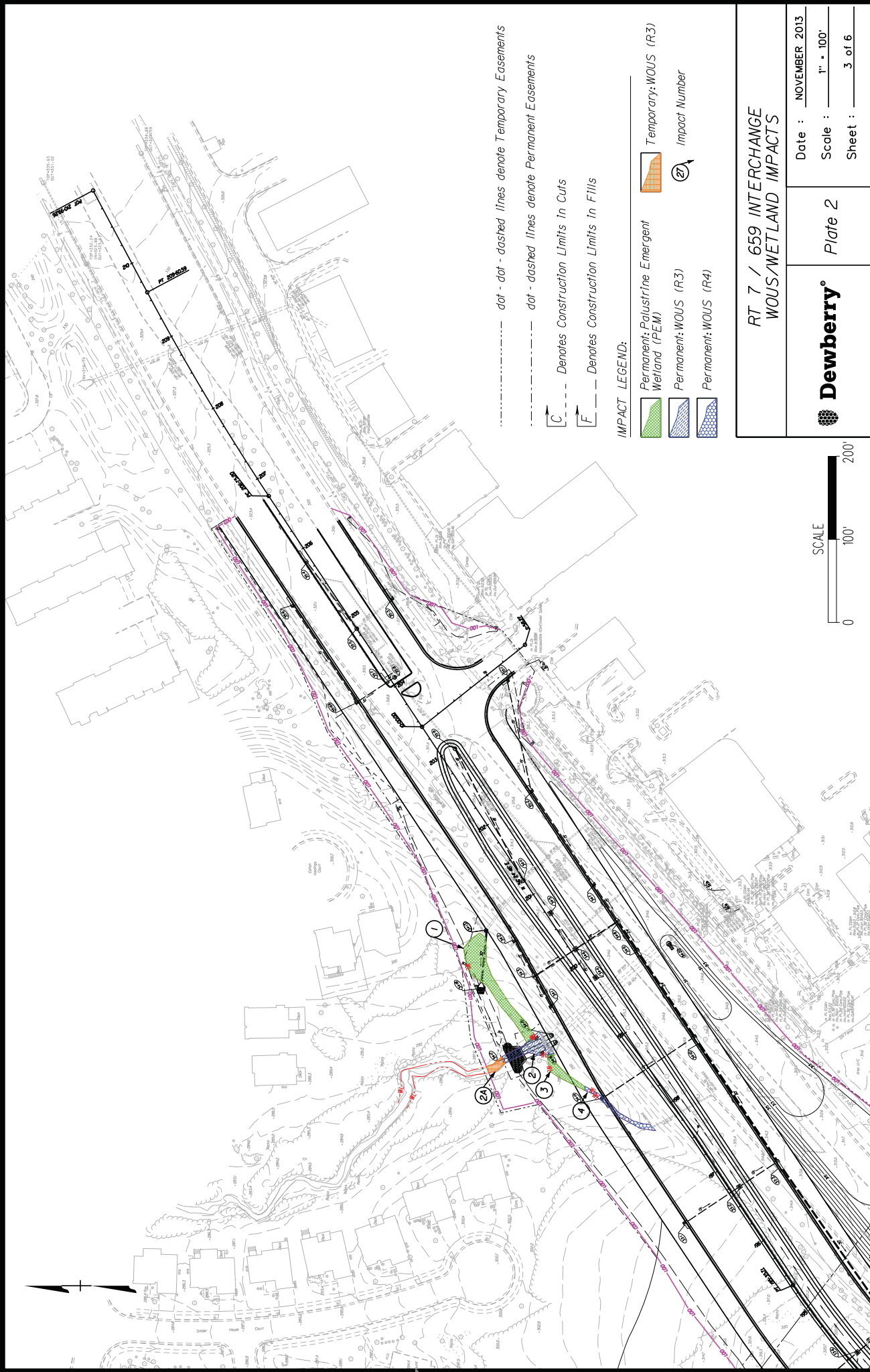
dot - dot - dashed lines denote Temporary Easements  
 dot - dashed lines denote Permanent Easements  
 C --- Denotes Construction Limits in Cuts  
 F --- Denotes Construction Limits in Fills

**IMPACT LEGEND:**

	Permanent Palustrine Emergent Wetland (PEM)		Temporary Palustrine Emergent Wetland (PEM)
	Permanent WOUS (R4)		Impact Number
	Permanent Palustrine Forested Wetland (PFO)		

	<b>RT 7 / 659 INTERCHANGE WOUS/WETLAND IMPACTS</b>	
	Date : NOVEMBER 2013	Scale : 1" = 100'
	Plate /	Sheet : 2 of 6








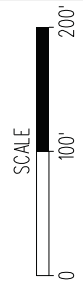


- - - - - dot - dot - dashed lines denote Temporary Easements  
 - - - - - dot - dashed lines denote Permanent Easements

C --- Denotes Construction Limits in Cuts  
 F --- Denotes Construction Limits in Fills

**IMPACT LEGEND:**

-  Permanent: Palustrine Emergent Wetland (PEM)
-  Permanent: WOUS (R3)
-  Permanent: WOUS (R4)
-  Temporary: WOUS (R3)
-  Impact Number



**RT 7 / 659 INTERCHANGE  
WOUS/WETLAND IMPACTS**

<b>Dewberry</b>	Plate 2	Date : NOVEMBER 2013
		Scale : 1" = 100'
		Sheet : 3 of 6

RT 7 / 659 INTERCHANGE  
WOUS/WETLAND IMPACTS

Date : NOVEMBER 2013  
Scale : 1" = 100'  
Sheet : 4 of 6



Plate 3

**IMPACT LEGEND:**

	Permanent: Palustrine Emergent Wetland (PEM)		Permanent: WOUS (R4)
	Permanent: Palustrine Forested Wetland (PFO)		Permanent: WOUS (R3)
	Permanent: Palustrine Open Water (POM)		Temporary: WOUS (R3)

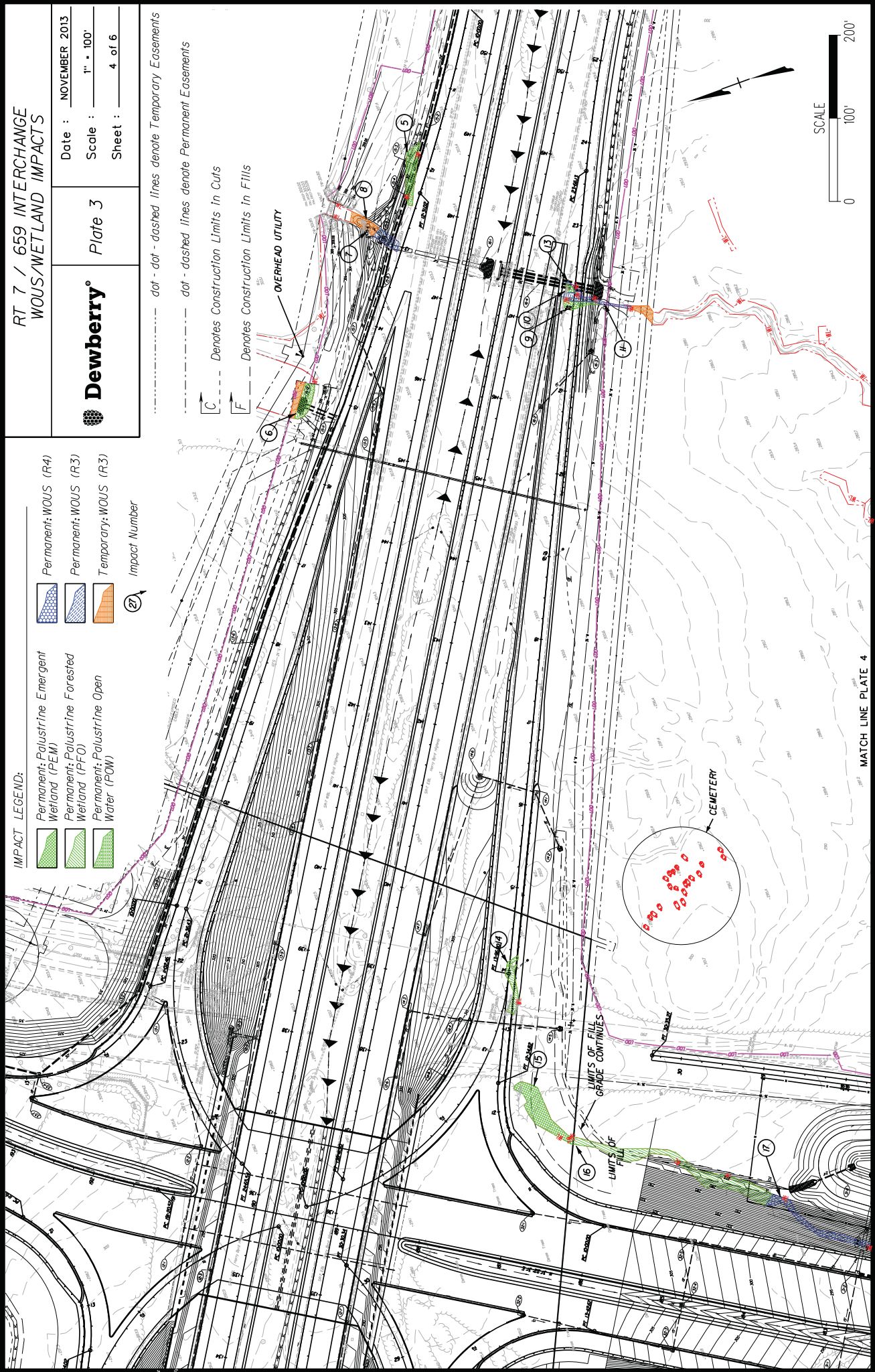
Impact Number

dot - dashed lines denote Temporary Easements  
dot - dashed lines denote Permanent Easements

Denotes Construction Limits In Cuts

Denotes Construction Limits In Fills

OVERHEAD UTILITY



MATCH LINE PLATE 4







**RT 7 / 659 INTERCHANGE  
WOUS/WETLAND IMPACTS**

Date : NOVEMBER 2013  
 Scale : 1" = 100'  
 Sheet : 6 of 6



Plate 5

**IMPACT LEGEND:**

Permanent Palustrine Forested Wetland (PFO)

Permanent WOUS (EPH)

Permanent WOUS (R3)

Impact Number

- dot - dot - dashed lines denote Temporary Easements
- dot - dashed lines denote Permanent Easements
- [C] --- Denotes Construction Limits in Cuts
- [F] --- Denotes Construction Limits in Fills