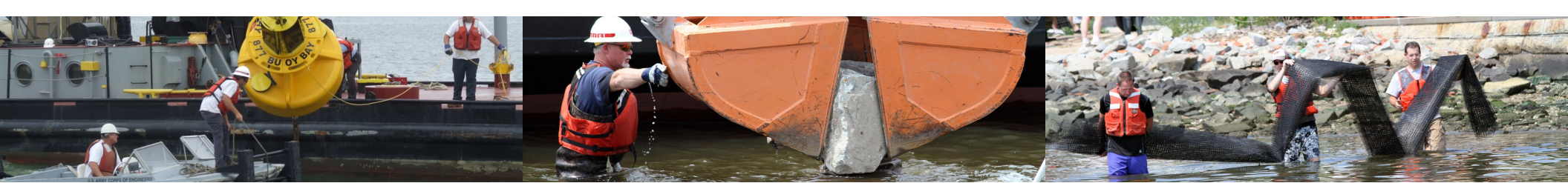


We have experience in many areas:

- Living Shorelines
- Oyster Reef Construction
- Beach Nourishment
- Dredging
- Military Construction
- Wetlands Restoration
- Submerged Aquatic Vegetation (SAV)
- Bridge Construction
- Sediment Management
- Military Operations and Maintenance
- Vertical Construction
- Roadway Construction
- Utility Construction



THE NATIONAL ENVIRONMENTAL POLICY ACT



The USACE Environmental Operating Principles are:

1. Foster sustainability as a way of life throughout the organization.
2. Proactively consider environmental consequences of all Corps activities and act accordingly.
3. Create mutually supporting economic and environmental solutions.
4. Continue to meet our corporate responsibility and accountability under the law for activities undertaken by the Corps, which may impact human and natural environments.
5. Consider the environment in employing a risk management and systems approach throughout the life cycles of projects and programs.
6. Leverage scientific, economic, and social knowledge to understand the environmental context and effects of Corps actions in a collaborative manner.
7. Employ an open, transparent process that respects views of individuals and groups

Norfolk District Capabilities and Experience

For more information, contact:
Norfolk District, USACE
757-201-7500

NEPA – Norfolk District Capabilities and Experience

The **National Environmental Policy Act (NEPA)** was signed into law on January 1, 1970. The Act establishes national environmental policy and goals for the protection, maintenance, and enhancement of the environment and provides a process for implementing these goals within the federal agencies.

The Norfolk District, United States Corps of Engineers (USACE) can provide NEPA support for any level of project or activity.

There are three types of NEPA documents and Norfolk District (NAO) has the experience and expertise to manage all three:



As part of these assessments, we can:

- Identify project needs, opportunities, goals and objectives
- Define existing conditions
- Determine which resource areas may be impacted
- Develop alternatives for analysis (or describe alternatives developed by customer)
- Analyze impacts/effects for each alternative
- Develop a cumulative impact analysis
- Determine/ensure compliance with environmental requirements
- Facilitate public and stakeholder involvement

To determine the level of impact, Norfolk District can provide the following services:

- Phase I and II archaeological investigations
- Wetlands delineations/assessments
- Vegetation and/or wildlife surveys
- Essential fish habitat assessments
- Sediment and elutriate analysis
- Hazardous and toxic waste assessments
- Geospatial analysis
- Environmental compliance – compile information for permit requests

Project Lifecycle Services:

- Monitoring Plans
- Mitigation Plans
- Master Plans
- Integrated Cultural Resources Management Plan (ICRMP)
- Natural Resources Management Plan (NRMP)

Categorical Exclusion:

An undertaking may be categorically excluded from a detailed environmental analysis if it meets certain criteria which a federal agency has previously determined as having no significant environmental impact. A number of agencies have developed lists of actions which are normally categorically excluded from environmental evaluation under their NEPA regulations.

EA/FONSI:

An Environmental Assessment (EA) is prepared to determine whether an undertaking would result in significant environmental effects. If no significant impacts are found, the agency issues a Finding of No Significant Impact (FONSI). The FONSI may address measures which an agency will take to avoid, mitigate or minimize potential significant impacts.

EIS:

If the EA determines that the environmental consequences of a proposed federal undertaking may be significant, an Environmental Impact Statement (EIS) is prepared. An EIS is a more detailed evaluation of the proposed action and alternatives. The public, other federal agencies and outside parties may provide input into the preparation of an EIS and then comment on the draft EIS when it is completed.