

ATTACHMENT A: DIRECT AND INDIRECT PROJECT APE MAPS

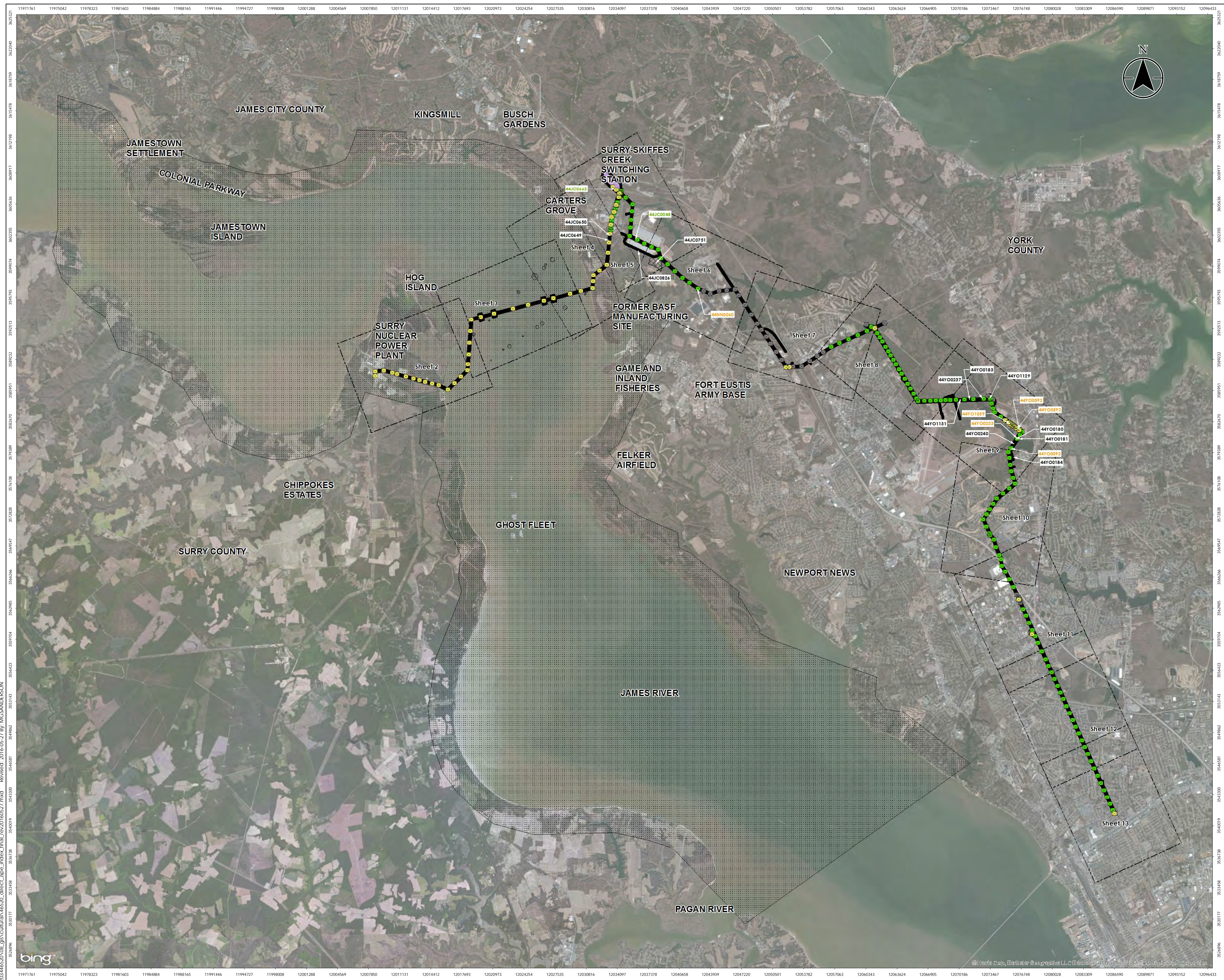
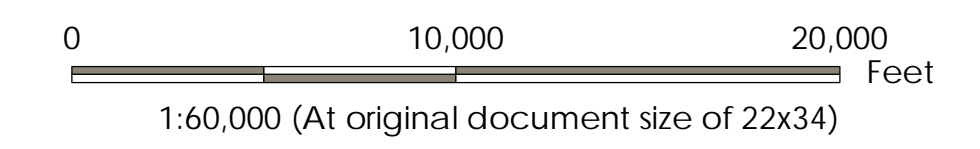


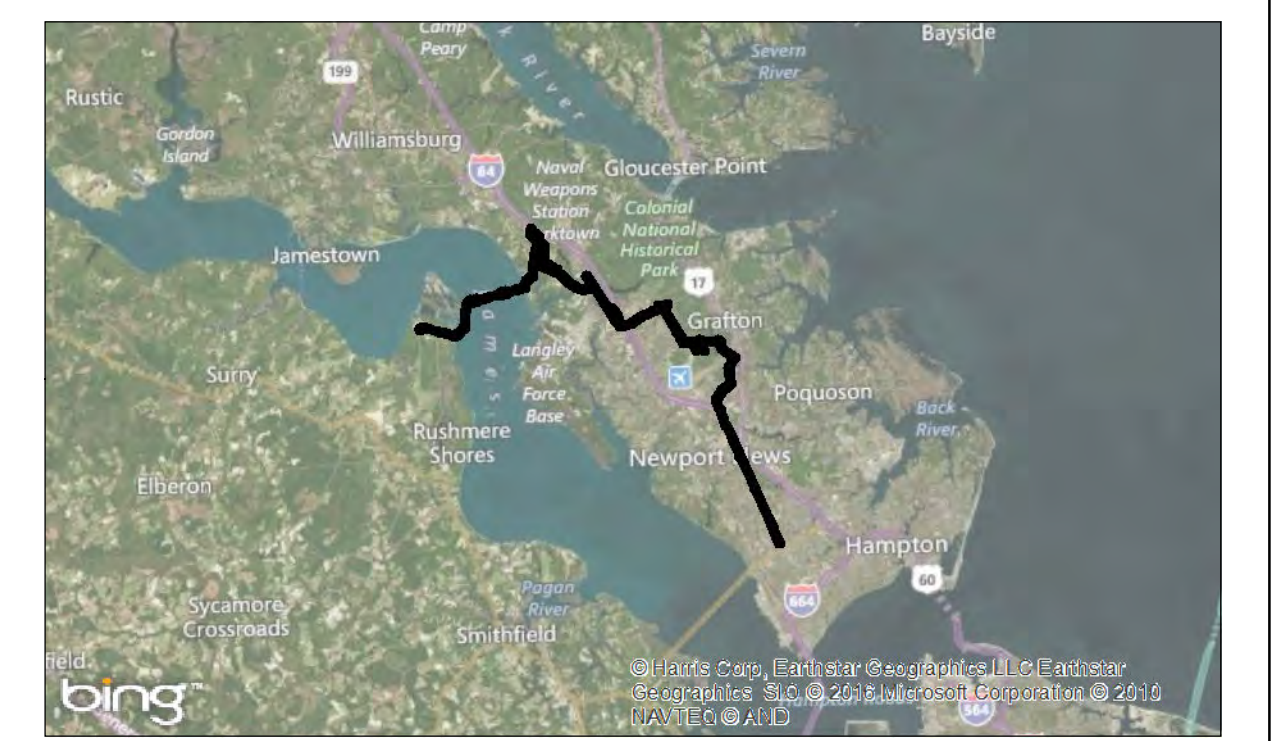
Figure No. 1
 Title Direct APE Map- Archaeological Resources
 Submitted: 2014-09-08
 Revised: 2015-05-21
 Revised: 2015-07-24
 Revised: 2015-09-10
 Revised: 2016-05-27

Client/Project Dominion Virginia Power
 Surry-Skiffes Creek-Wheaton
 Proposed 500/230 kV Line
 Project Location James City County, Surry County, York County, City of Newport News, and City of Hampton, Virginia
 Prepared by MGS on 2015-05-19
 Technical Review by CPG on 2015-05-19
 Independent Review by CFC on 2015-05-19



- Direct APE
- Sheet Index
- Archaeological Resources
 - Resource to be Managed as Unevaluated for Listing on NRHP
 - Resource Potentially Eligible for Listing on NRHP
 - Resource Eligible for Listing on NRHP
 - Underwater Buffer of Anomalies to be Managed as Unevaluated for Listing on NRHP
 - Eligible Historic District
- Structure Activity
 - Proposed New Structure
 - Reconstructing Existing Structure
 - Remove and Replace Existing Structure

US Army Corps of Engineers
 Norfolk District Regulatory Office
 Received by: RLS
 Date: June 28, 2016



- Notes
1. Coordinate System: NAD 1983 StatePlane Virginia South FIPS 4502 Feet
 2. Tower Locations and Project Limits provided by Dominion Virginia Power
 3. Orthoimagery © Bing Maps
 4. Only historic properties under the authority of Section 106 are shown. National Register of Historic Places eligibility status provided by the Corps with DHR concurrence on May 1, 2015 and the Keeper of the National Register on August 14, 2015.
 5. Microsoft product screen shot(s) reprinted with permission from Microsoft Corporation

U:\2014\46520\08_gh\Cultural\46520_direct_ape_index_final_rev20160527.mxd Reviewed: 2016-05-27 By: MGSANDESON

Disclaimer: Stantec assumes no responsibility for data supplied in electronic format. The recipient accepts full responsibility for verifying the accuracy and completeness of the data. The recipient releases Stantec, its officers, employees, consultants and agents, from any and all claims arising in any way from the content or provision of the data.

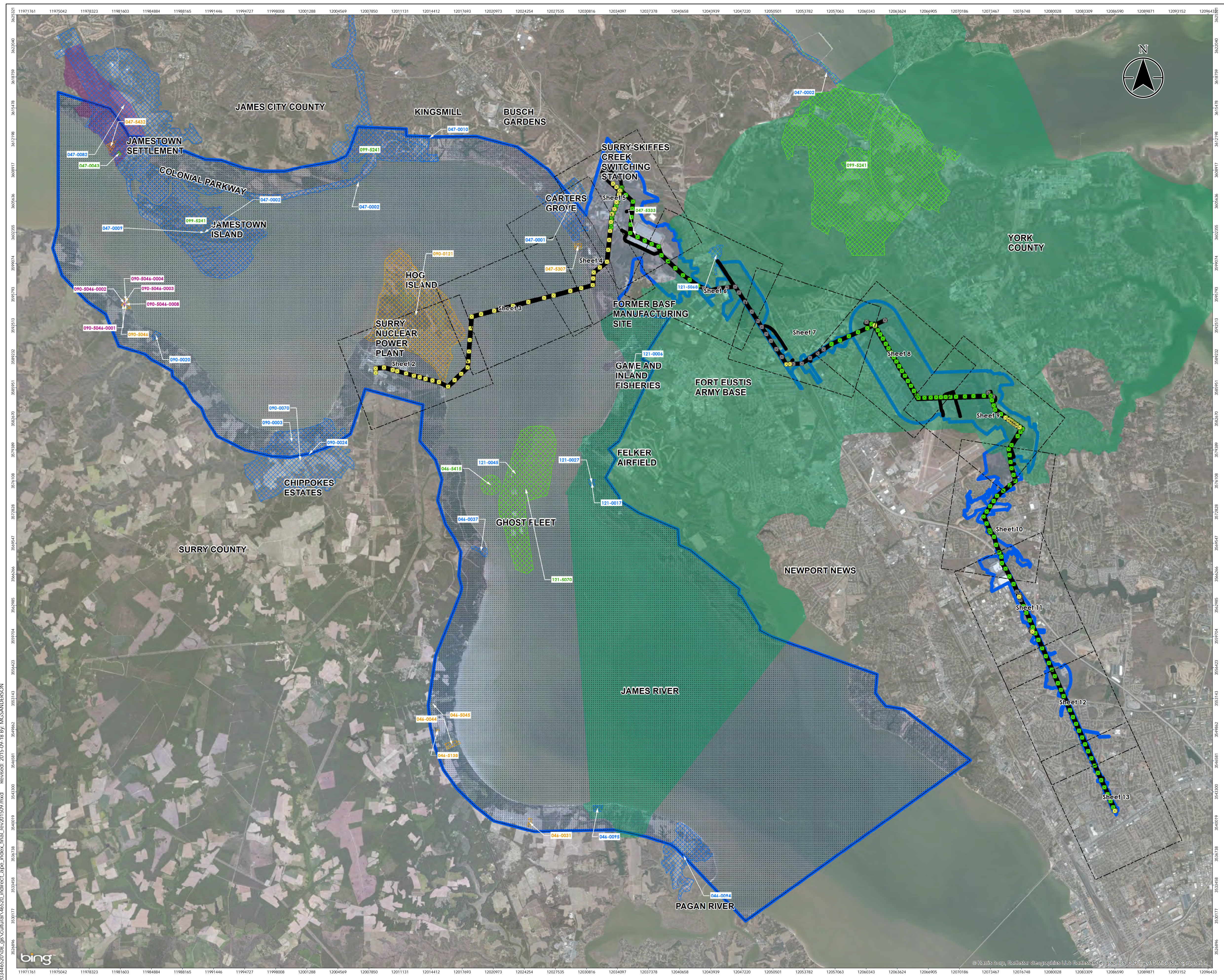
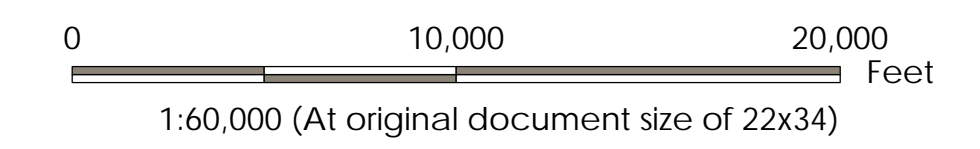


Figure No. 1
 Title Indirect APE Map - Architectural Resources
 Submitted: 2014-09-08
 Revised: 2015-05-19
 Revised: 2015-07-24
 Revised: 2015-09-10

Client/Project
 Dominion Virginia Power
 Surry-Skiffes Creek-Wheaton
 Proposed 500/230 kV Line
 Project Location James City County, Surry County, York County, City of Newport News, and City of Hampton, Virginia
 203446520
 Prepared by MGS on 2015-05-19
 Technical Review by CPG on 2015-05-19
 Independent Review by CFC on 2015-05-19



- Direct APE
- Indirect APE
- Sheet Index
- Architectural Resources
 - Resource Listed on NRHP
 - Resource Not Individually Eligible, Contributing to Scotland Wharf Historic District
 - Resource Potentially Eligible for Listing on NRHP
 - Resource Eligible for Listing on NRHP
 - Eligible Historic District
 - Battle of Green Spring
 - Battle of Yorktown
- Structure Activity
 - Proposed New Structure
 - Reconductoring Existing Structure
 - Remove and Replace Existing Structure

US Army Corps of Engineers
 Norfolk District Regulatory Office
 Received by: RLS
 Date: Sept 18, 2015



- Notes
1. Coordinate System: NAD 1983 StatePlane Virginia South FIPS 4502 Feet
 2. Tower Locations and Project Limits provided by Dominion Virginia Power
 3. Orthoimagery © Bing Maps
 4. Only historic properties under the authority of Section 106 are shown. National Register of Historic Places eligibility status provided by the Corps with DHR concurrence on May 1, 2015 and May 11, 2015 and the Keeper of the National Register on August 14, 2015.
 5. Microsoft product screen shot(s) reprinted with permission from Microsoft Corporation

U:\203446520\08_gis\cultural\46520_indirect_aape_index_final_1021509.mxd Revised: 2015-09-18 By: MCSANDERSON
 3528896 3530177 3531468 3532738 3534019 3535300 3536581 3537862 3539143 3540423 3541704 3542985 3544266 3545547 3546828 3548109 3549390 3550671 3551952 3553233 3554514 3555795 3557076 3558357 3559638 3560919 3562200 3563481 3564762 3566043 3567324 3568605 3569886 3571167 3572448 3573729 3575010 3576291 3577572 3578853 3580134 3581415 3582696 3583977 3585258 3586539 3587820 3589101 3590382 3591663 3592944 3594225 3595506 3596787 3598068 3599349 3600630 3601911 3603192 3604473 3605754 3607035 3608316 3609597 3610878 3612159 3613440 3614721 3616002 3617283 3618564 3619845 3621126 3622407 3623688 3624969 3626250 3627531 3628812 3630093 3631374 3632655 3633936 3635217 3636498 3637779 3639060 3640341 3641622 3642903 3644184 3645465 3646746 3648027 3649308 3650589 3651870 3653151 3654432 3655713 3656994 3658275 3659556 3660837 3662118 3663399 3664680 3665961 3667242 3668523 3669804 3671085 3672366 3673647 3674928 3676209 3677490 3678771 3680052 3681333 3682614 3683895 3685176 3686457 3687738 3689019 3690300 3691581 3692862 3694143 3695424 3696705 3697986 3699267 3700548 3701829 3703110 3704391 3705672 3706953 3708234 3709515 3710796 3712077 3713358 3714639 3715920 3717201 3718482 3719763 3721044 3722325 3723606 3724887 3726168 3727449 3728730 3730011 3731292 3732573 3733854 3735135 3736416 3737697 3738978 3740259 3741540 3742821 3744102 3745383 3746664 3747945 3749226 3750507 3751788 3753069 3754350 3755631 3756912 3758193 3759474 3760755 3762036 3763317 3764598 3765879 3767160 3768441 3769722 3771003 3772284 3773565 3774846 3776127 3777408 3778689 3779970 3781251 3782532 3783813 3785094 3786375 3787656 3788937 3790218 3791499 3792780 3794061 3795342 3796623 3797904 3799185 3800466 3801747 3803028 3804309 3805590 3806871 3808152 3809433 3810714 3811995 3813276 3814557 3815838 3817119 3818400 3819681 3820962 3822243 3823524 3824805 3826086 3827367 3828648 3829929 3831210 3832491 3833772 3835053 3836334 3837615 3838896 3840177 3841458 3842739 3844020 3845301 3846582 3847863 3849144 3850425 3851706 3852987 3854268 3855549 3856830 3858111 3859392 3860673 3861954 3863235 3864516 3865797 3867078 3868359 3869640 3870921 3872202 3873483 3874764 3876045 3877326 3878607 3879888 3881169 3882450 3883731 3885012 3886293 3887574 3888855 3890136 3891417 3892698 3893979 3895260 3896541 3897822 3899103 3900384 3901665 3902946 3904227 3905508 3906789 3908070 3909351 3910632 3911913 3913194 3914475 3915756 3917037 3918318 3919600 3920881 3922162 3923443 3924724 3926005 3927286 3928567 3929848 3931129 3932410 3933691 3934972 3936253 3937534 3938815 3940096 3941377 3942658 3943939 3945220 3946501 3947782 3949063 3950344 3951625 3952906 3954187 3955468 3956749 3958030 3959311 3960592 3961873 3963154 3964435 3965716 3966997 3968278 3969559 3970840 3972121 3973402 3974683 3975964 3977245 3978526 3979807 3981088 3982369 3983650 3984931 3986212 3987493 3988774 3990055 3991336 3992617 3993898 3995179 3996460 3997741 3999022 4000303 4001584 4002865 4004146 4005427 4006708 4007989 4009270 4010551 4011832 4013113 4014394 4015675 4016956 4018237 4019518 4020799 4022080 4023361 4024642 4025923 4027204 4028485 4029766 4031047 4032328 4033609 4034890 4036171 4037452 4038733 4040014 4041295 4042576 4043857 4045138 4046419 4047700 4048981 4050262 4051543 4052824 4054105 4055386 4056667 4057948 4059229 4060510 4061791 4063072 4064353 4065634 4066915 4068196 4069477 4070758 4072039 4073320 4074601 4075882 4077163 4078444 4079725 4081006 4082287 4083568 4084849 4086130 4087411 4088692 4089973 4091254 4092535 4093816 4095097 4096378 4097659 4098940 4100221 4101502 4102783 4104064 4105345 4106626 4107907 4109188 4110469 4111750 4113031 4114312 4115593 4116874 4118155 4119436 4120717 4121998 4123279 4124560 4125841 4127122 4128403 4129684 4130965 4132246 4133527 4134808 4136089 4137370 4138651 4139932 4141213 4142494 4143775 4145056 4146337 4147618 4148899 4150180 4151461 4152742 4154023 4155304 4156585 4157866 4159147 4160428 4161709 4162990 4164271 4165552 4166833 4168114 4169395 4170676 4171957 4173238 4174519 4175800 4177081 4178362 4179643 4180924 4182205 4183486 4184767 4186048 4187329 4188610 4189891 4191172 4192453 4193734 4195015 4196296 4197577 4198858 4200139 4201420 4202701 4203982 4205263 4206544 4207825 4209106 4210387 4211668 4212949 4214230 4215511 4216792 4218073 4219354 4220635 4221916 4223197 4224478 4225759 4227040 4228321 4229602 4230883 4232164 4233445 4234726 4236007 4237288 4238569 4239850 4241131 4242412 4243693 4244974 4246255 4247536 4248817 4250098 4251379 4252660 4253941 4255222 4256503 4257784 4259065 4260346 4261627 4262908 4264189 4265470 4266751 4268032 4269313 4270594 4271875 4273156 4274437 4275718 4276999 4278280 4279561 4280842 4282123 4283404 4284685 4285966 4287247 4288528 4289809 4291090 4292371 4293652 4294933 4296214 4297495 4298776 4300057 4301338 4302619 4303900 4305181 4306462 4307743 4309024 4310305 4311586 4312867 4314148 4315429 4316710 4317991 4319272 4320553 4321834 4323115 4324396 4325677 4326958 4328239 4329520 4330801 4332082 4333363 4334644 4335925 4337206 4338487 4339768 4341049 4342330 4343611 4344892 4346173 4347454 4348735 4350016 4351297 4352578 4353859 4355140 4356421 4357702 4358983 4360264 4361545 4362826 4364107 4365388 4366669 4367950 4369231 4370512 4371793 4373074 4374355 4375636 4376917 4378198 4379479 4380760 4382041 4383322 4384603 4385884 4387165 4388446 4389727 4391008 4392289 4393570 4394851 4396132 4397413 4398694 4400000

Disclaimer: Stantec assumes no responsibility for data supplied in electronic format. The recipient accepts full responsibility for verifying the accuracy and completeness of the data. The recipient releases Stantec, its officers, employees, consultants and agents, from any and all claims arising in any way from the content or provision of the data.

ATTACHMENT B: LIST OF DOCUMENTS SUBMITTED BY DOMINION IN SUPPORT OF CONSULTATION

- 1) *Phase II Evaluation Site 44JC0662 for the Dominion Virginia Power Skiffes Switching Station, James City County, Virginia (CRI, May 2012).*
- 2) *Phase I Cultural Resources Survey of the Proposed Approximately 20.2-mile Dominion Virginia Power Skiffes Creek to Whealton 230kV Transmission Line in James City and York Counties, and the Cities of Newport News and Hampton, Virginia, Volumes I and II (CRI, July 2012).*
- 3) *Phase I Cultural Resources Survey of the Proposed Dominion Virginia Power Skiffes Creek to Surry 500 kV Transmission Line Alternatives in James City and Surry Counties, Virginia, Volumes I and II, (Stantec, July 2013, Revised April 2014).*
- 4) *Memoranda Titled: Phase IA Walkover and Phase I Archaeological Survey - BASF Corridor Realignment – Surry to Skiffes Creek 500 kV Transmission Line Project (Stantec, July 2014).*
- 5) *Addendum to the Phase I Cultural Resources Survey of the Proposed Dominion Virginia Power Skiffes Creek to Surry 500 kV Transmission Line in James City, Isle of Wight and Surry Counties, Virginia (Stantec, October 2014). (Additional information regarding three properties {i.e. 047-5307; Artillery Site at Trebell's Landing, 090-0121; Hog Island, and 099-5282; Battle of Williamsburg} per VDHR's request was provided in Stantec's letter dated February 2, 2015.)*
- 6) *Addendum to A Phase I Cultural Resources Survey to the Proposed Approximately 20.2-mile Dominion Virginia Power Skiffes Creek to Whealton 230 kV Transmission Line in James City and York Counties, and the Cities of Newport News and Hampton, Virginia, Volumes I: Technical Report (Stantec, July 2015).*
- 7) *Visual Effects Assessment for the Proposed Dominion Virginia Power Surry to Skiffes Creek 500kV Transmission Line Project and Skiffes Creek 500-230-115 kV Switching Station James City, Isle of Wight, and Surry Counties (Stantec, March 2014).*
- 8) *Addendum to the Visual Effects Assessment for the Proposed Dominion Virginia Power Surry to Skiffes Creek 500 kV Transmission Line Project James City, Isle of Wight, and Surry Counties (Stantec, October 2014).*

- 9) *Addendum to the Visual Effects Assessment for the Proposed Dominion Virginia Power Surry to Skiffes Creek 500 kV Transmission Line Green Spring Battlefield (Stantec, November 2014).*
- 10) *Interactive Simulations Surry-Skiffes Creek 500 kV Transmission Line James River Crossing (Dominion/TRUESCAPE, March 2015).*
- 11) *Cultural Resource Affects Assessment, Surry-Skiffes Creek-Wheaton Transmission Line Project, Surry, James City, and York Counties, Cities of Newport News and Hampton, Virginia (Stantec, September 2015).*
- 12) *Photo Simulation Overview Surry-Skiffes Creek-Wheaton Transmission Line Project, Surry, James City and York Counties, Cities of Newport News and Hampton, Virginia. (Dominion/TRUESCAPE, Revised August 2016).*

**ATTACHMENT C: LIST OF EFFECTED HISTORIC PROPERTIES UNDER
CONSIDERATION**

DHR ID#	Resource Name/Address	VLR/NRHP Status	Distance	COE Effect Determination	Proposed Mitigation and Project Oversight
046-0031	Bourne-Turner House at Smith's Beach	Potentially Eligible – Criterion C	8.75	No Adverse Effect	
046-0037	Fort Huger	NRHP-Listed – Criterion D	3.21	No Adverse Effect	
046-0044	Bay Cliff Manor on Burwell's Bay/James C. Sprigg, Jr. House	Potentially Eligible Under Criterion C	7.11	No Adverse Effect	
046-0094	Basses Choice (Days Point Archeological District, Route 673)	NRHP-Listed; Archaeological Sites 44IW0003- 44IW0237 – Criterion D	9.85	No Adverse Effect	
046-0095	Fort Boykin Archaeological Site/Herbert T. Greer House and Gardens, ...	NRHP-Listed – Criterion D	8.84	No Adverse Effect	
046-5045	Barlow-Nelson House, 5374 Old Stage Highway	Potentially Eligible Under Criterion C	6.33	No Adverse Effect	
046-5138	Bay View School, 6114 Old Stage Hwy	Potentially Eligible Under Criteria A and C	6.84	No Adverse Effect	
046-5415	USS Sturgis (MH - 1A Sturgis, Nuclear Barge, James River Reserve Fleet)	Eligible	1.92	No Adverse Effect	
047-0001	Carter's Grove	NHL; NRHP-Listed – Criterion C	0.43	Adverse Effect	<p>1) Landscape enhancement and protection of 6,000 linear feet of shoreline at Carters Grove. [Stipulation III.a.1.A]. Administered through The Conservation Fund. An alternative mitigation project is identifying specific landscape and viewshed enhancement, shoreline protection, and other projects that enhance the affected setting and feeling of Chippokes Plantation State Park.</p> <p>2) The development of interpretive signs to inform visitors about the historic significance and character of Jamestown Island-Hog Island-Captain John Smith Trail Historic District and other thematically related locations in and outside the APE. [Stipulation I.c].</p> <p>3) The creation of a HALS photo document of Jamestown Island-Hog Island-Captain John Smith Trail Historic District and other adversely affected historic properties. [Stipulation I.d].</p> <p>4) Examination of all available and feasible tower coating and finishing materials and methods that will further minimize and/or maintain the visual intensity of the</p>

DHR ID#	Resource Name/Address	VLR/NRHP Status	Distance	COE Effect Determination	Proposed Mitigation and Project Oversight
					transmission line infrastructure crossing the river, above and beyond the visibility reduction achieved by standard weathered galvanized steel coatings, that meet and comply with all applicable state and federal law. [Stipulation I.e].
047-0002	Colonial National Historic Park; Colonial Parkway Historic District	NRHP-Listed – Criteria A and C	3.16	Adverse Effect	<p>1) Landscape enhancement and shoreline protection to preserve the setting and feeling of the Colonial Parkway unit at the Colonial National Historical Park consistent with the National Park Service's Cultural Landscape Inventory (2008) [Stipulation III.b.1.A]. Administered by the Conservation Fund.</p> <p>2) Visitor interpretation and visitor engagement opportunities at Colonial National Historical Park [Stipulation III.c.1.A.]. Administered through The Conservation Fund.</p> <p>3) An alternative mitigation project is identifying specific landscape and viewshed enhancement, shoreline protection, and other projects that enhance the affected setting, feeling and overall understanding of the Jamestown Island-Hog Island-Captain John Smith Trail Historic District and thematically related areas including Jamestown Settlement and Fort Monroe in Stipulation III.b.7.-11..</p> <p>4) The development of interpretive signs to inform visitors about the historic significance and character of Jamestown Island-Hog Island-Captain John Smith Trail Historic District and other thematically related locations in and outside the APE. [Stipulation I.c].</p> <p>5) The creation of a HALS photo document of Jamestown Island-Hog Island-Captain John Smith Trail Historic District and other adversely affected historic properties. [Stipulation I.d].</p> <p>6) Examination of all available and feasible tower coating and finishing materials and methods that will further minimize and/or maintain the visual intensity of the transmission line infrastructure crossing the river, above and beyond the visibility reduction achieved by standard weathered galvanized steel coatings, that meet and comply with all applicable state and federal law. [Stipulation I.e].</p>
004-0009	Jamestown National Historic Site / Jamestown Island / Jamestown Island Historic District	NRHP-Listed – Criteria A and D	3.26	Adverse Effect	<p>1) Seawall rehabilitation or replacement at Historic Jamestown to provide protections from erosion and sea level rise and to execute a project that provides further protections through a series of breakwaters, sills and revetments greater than those provided in the 2004 and restoration of Back Creek at Historic Jamestown [Stipulation III.c.1.B.i]. Administered through The Conservation Fund.</p> <p>2) Archaeological investigation and identification at Historic Jamestown to support ongoing investigations including excavations around Memorial Church with a focus on discovering the early churches that stood on the site of the 1617 church, the site of the nation's first representative government [Stipulation III.c.1.B.iii]. Administered through The Conservation Fundh3) Visitor interpretation and visitor engagement opportunities at Historic Jamestown [Stipulation III.c.1.B.iv]. Administered through the Conservation Fund.</p> <p>4) An alternative mitigation fallback project to Stipulations III.c.1.B.i, to.iv is identifying specific landscape and viewshed enhancement, shoreline protection, and</p>

DHR ID#	Resource Name/Address	VLR/NRHP Status	Distance	COE Effect Determination	Proposed Mitigation and Project Oversight
					<p>other projects that enhance the affected setting, feeling and overall understanding of the Jamestown Island-Hog Island-Captain John Smith Trail Historic District and thematically related areas.</p> <p>5) Conservation, preservation, and study of collections from previously excavated archaeological sites throughout the APE, including, but not limited to, at Martin's Hundred, Carter's Grove, and Kingsmill, as well as newly located archaeological sites as a result of this project [Stipulation III.c.1.C].</p> <p>6) The enhancement and preservation of Werowocomoco with associated supporting facilities at York River State Park will allow visitors there to see the landscape as it existed in pre-colonial days [Stipulation III.d.1.B.].</p> <p>7) The development of interpretive signs to inform visitors about the historic significance and character of Jamestown Island-Hog Island-Captain John Smith Trail Historic District and other thematically related locations in and outside the APE. [Stipulation I.c].</p> <p>8) The creation of a HALS photo document of Jamestown Island-Hog Island-Captain John Smith Trail Historic District and other adversely affected historic properties. [Stipulation I.d].</p> <p>9) Examination of all available and feasible tower coating and finishing materials and methods that will further minimize and/or maintain the visual intensity of the transmission line infrastructure crossing the river, above and beyond the visibility reduction achieved by standard weathered galvanized steel coatings, that meet and comply with all applicable state and federal law. [Stipulation I.e].</p>
047-0010	Kingsmill Plantation	NRHP-Listed – Criteria A and D	3.16	No Adverse Effect	
047-0043	Amblers (Amblers-on-the-James)	Eligible (Recently NRHP- Listed) – Criterion C	6.64	No Adverse Effect	
047-0082	Governor's Land Archaeological District	NRHP-Listed – Criteria A and D	5.7	No Adverse Effect	
047-5307	Artillery Landing Site at Trebell's Landing	Potentially Eligible – Criterion D	0.52	No Adverse Effect	
047-5333	Martin's Hundred Graveyard (Cemetery)	Eligible – Criteria A and D	0	No Adverse Effect	
047-5432	4H Camp, 4H Club Road	Potentially Eligible – Criteria A and C	9.2	No Adverse Effect	
090-0020	Pleasant Point (Crouches Creek Plantation)	NRHP-Listed – Criteria A and C	4.32	No Adverse Effect	

DHR ID#	Resource Name/Address	VLR/NRHP Status	Distance	COE Effect Determination	Proposed Mitigation and Project Oversight
090-0024	New Chippokes (Jones-Stewart Mansion)	NRHP-Listed; associated with Chippokes Plantation Historic District – Criterion C	2.07	No Adverse Effect	
090-0070/ 090-0003	Chippokes Plantation Historic District (Chippokes State Park)	NRHP-Listed – Criteria A, C, and D	1.26	No Adverse Effect	
090-0121	Hog Island Wildlife Management Area	Potentially Eligible – Criteria A and D for purposes of 106 review	0	Adverse Effect	<p>1) Enhancement of 1,100 acres of palustrine emergent marsh at Hog Island [Stipulation III.e.1.B.i]. Administered through DGIF.</p> <p>2) Living shoreline and shoreline restoration in Surry County [Stipulation III.e.1.B.ii]. Administered through DGIF.</p> <p>3) History and remote viewing and interpretation facility at Hog Island that recognizes Hog Island's connection and contributions to the Jamestown Island-Hog Island-John Smith Trail Historic District, and the individual significance to the Captain John Smith NHT [Stipulation III.e.1.B.iv]. Administered through DGIF.</p> <p>4) Comprehensive archaeological identification survey of Hog Island [Stipulation III.e.1.B.v]. Administered through DGIF.</p> <p>5) The development of interpretive signs to inform visitors about the historic significance and character of Jamestown Island-Hog Island-Captain John Smith Trail Historic District and other thematically related locations in and outside the APE. [Stipulation I.c].</p> <p>6) The creation of a HALS photo document of Jamestown Island-Hog Island-Captain John Smith Trail Historic District and other adversely affected historic properties. [Stipulation I.d].</p> <p>7) Examination of all available and feasible tower coating and finishing materials and methods that will further minimize and/or maintain the visual intensity of the transmission line infrastructure crossing the river, above and beyond the visibility reduction achieved by standard weathered galvanized steel coatings, that meet and comply with all applicable state and federal law. [Stipulation I.e].</p>
090-5046	Scotland Wharf Historic District	Potentially Eligible – Criteria A and C	5.03	No Adverse Effect	
90-5046-0001	House, 16177 Rolfe Hwy (Rt 31)	Not Individually Eligible; Contributing to Scotland Wharf Historic District	5.16	No Adverse Effect	
90-5046-0002	House, 16223 Rolfe Hwy (Rt 31)	Not Individually Eligible; Contributing to Scotland Wharf Historic District	5.16	No Adverse Effect	
090-5046-0003	House, 16239 Rolfe Hwy	Not Individually Eligible; Contributing to Scotland	5.16	No Adverse Effect	

DHR ID#	Resource Name/Address	VLR/NRHP Status	Distance	COE Effect Determination	Proposed Mitigation and Project Oversight
	(Rt 31)	Wharf Historic District			
090-5046-0004	House, 16271 Rolfe Hwy (Rt 31)	Not Individually Eligible; Contributing to Scotland Wharf Historic District	5.14	No Adverse Effect	
090-5046-0008	House, 16206 Rolfe Hwy (Rt 31)	Not Individually Eligible; Contributing to Scotland Wharf Historic District	5.12	No Adverse Effect	
099-5241	Yorktown and Yorktown Battlefield (Colonial National Monument/Historic al Park)	Listed (as part of Colonial National Historical Park) – Criteria A, C, and D	1.37	No Adverse Effect	
099-5283	Battle-of Yorktown (Civil War)	Eligible – Criteria A and D	0	Adverse Effect	<p>1) Battlefield land conservation on local government or private lands associated with the Battle of Yorktown and Fort Crafford [Stipulations III.g.1.A, III.g.1.B and III.g.1.C]. Administered through the Virginia Land Conservation Foundation.</p> <p>2) Development of public interpretive programs, signage, and exhibits focusing on the Peninsula Campaign including the Battle of Hampton Roads, the Battle of Yorktown, the Battle of Williamsburg, and the strategic importance of Fort Monroe in each. [Stipulation III.g.1.A].</p> <p>3) The development of interpretive signs to inform visitors about the historic significance and character of Jamestown Island-Hog Island-Captain John Smith Trail Historic District and other thematically related locations in and outside the APE. [Stipulation I.c].</p> <p>4) The creation of a HALS photo document of Jamestown Island-Hog Island-Captain John Smith Trail Historic District and other adversely affected historic properties. [Stipulation I.d].</p> <p>5) Examination of all available and feasible tower coating and finishing materials and methods that will further minimize and/or maintain the visual intensity of the transmission line infrastructure crossing the river, above and beyond the visibility reduction achieved by standard weathered galvanized steel coatings, that meet and comply with all applicable state and federal law. [Stipulation I.e].</p>
121-0006	Matthew Jones House	Listed – Criterion C	1.93	No Adverse Effect	
121-0017	Crafford House Site/ Earthworks (Fort Eustis)	Listed (as part of 121-0027) – Criteria A and D	3.38	No Adverse Effect	
121-0027	Fort Crafford	Listed – Criteria A and D	3.28	Adverse Effect	<p>1) Battlefield land conservation on local government or private lands associated with the Battle of Yorktown and Fort Crafford [Stipulation III.g.1.A, III.g.1.B and III.g.1.C]. Administered through the Virginia Land Conservation Foundation.</p> <p>2) The development of a 3D Laser Scan of Fort Crafford and an earthwork preservation</p>

DHR ID#	Resource Name/Address	VLR/NRHP Status	Distance	COE Effect Determination	Proposed Mitigation and Project Oversight
					<p>plan to include a landscape management plan</p> <p>3) The development of interpretive signs to inform visitors about the historic significance and character of Jamestown Island-Hog Island-Captain John Smith Trail Historic District and other thematically related locations in and outside the APE. [Stipulation I.c].</p> <p>4) The creation of a HALS photo document of Jamestown Island-Hog Island-Captain John Smith Trail Historic District and other adversely affected historic properties. [Stipulation I.d].</p> <p>5) Examination of all available and feasible tower coating and finishing materials and methods that will further minimize and/or maintain the visual intensity of the transmission line infrastructure crossing the river, above and beyond the visibility reduction achieved by standard weathered galvanized steel coatings, that meet and comply with all applicable state and federal law. [Stipulation I.e].</p>
121-0045	S.S. John W. Brown	Listed – Criterion A	2.18	No Adverse Effect	
121-5068	Village of Lee Hall Historic District	Eligible – Criteria A and C (Public Notice notes that Lee Hall NRHP- Listed – Criterion C)	0.25	No Adverse Effect	
121-5070	Ghost Fleet (James River Reserve Fleet/ Maritime Admin. Non- Retention Ships)	Eligible – Criterion A	1.64	No Adverse Effect	
N/A	Battle of Green Springs	Eligible – Criterion A	5.7	No Adverse Effect	
N/A	Historic District (formally Jamestown Island-Hog Island Cultural Landscape) including CAJO	Eligible – Criteria A, B, C, and D	0	Adverse Effect	<p>1) Captain John Smith Chesapeake NHT enhanced experiences, land acquisition, visitor interpretation and facilities, archeological investigation and preservation of Werowocomoco, Gloucester County, Virginia (principal residence of Powhatan, paramount chief of Indian Tribes in Virginia's coastal region at the time English colonists arrived in 1607, and located along the Captain John Smith Chesapeake National Historic Trail on the York River); and natural and cultural values on the James River and the north and south sides of the York River in the area of Werowocomoco that will preserve and provide the visitor with an undisturbed landscape and vista that evokes the setting and feeling of the river during the period of Captain John Smith's exploration [Stipulation III.d.1.B]. Administered through The Conservation Fund.</p> <p>2) Historic resource identification and documentation for the Jamestown Island-Hog Island-Captain John Smith Trail Historic District, including the contributing section of the Captain John Smith Chesapeake National Historic Trail within the APE including Historic American Landscape documentation of the Jamestown Island-Hog Island-Captain John Smith Trail Historic District Cultural Landscape in accordance with NPS Heritage Documentation Program Standards and Guidelines [Stipulation III.c.1.B.iii]. Administered through The Conservation Fund.</p>

DHR ID#	Resource Name/Address	VLR/NRHP Status	Distance	COE Effect Determination	Proposed Mitigation and Project Oversight
					<p>3) Captain John Smith NHT visitor engagement and visitor interpretation programs and projects at the National Park Service's visitor center on Jamestown Island [Stipulation III.c.1.B.iv]. Administered through the Conservation Fund.</p> <p>4) Acquisition of 400 acres of upland/emergent marsh adjacent to the Chickahominy Wildlife Management Area, Charles City County, Virginia to improve water quality within the APE, subject to the approval of the Board of Game and Inland Fisheries [Stipulation III.e.iii]. Administered through DGIF.</p> <p>5) Riparian buffer creation and replacement projects and erosion and sediment control projects within the James River watershed [Stipulation III.f.1]. Administered by Virginia Environmental Endowment.</p> <p>6) Landscape preservation to include land and easement acquisition with an emphasis on projects within the Indirect APA [StipulationIII.f.1].</p> <p>7) The development of interpretive signs to inform visitors about the historic significance and character of Jamestown Island-Hog Island-Captain John Smith Trail Historic District and other thematically related locations in and outside the APE. [Stipulation I.c].</p> <p>8) The creation of a HALS photo document of Jamestown Island-Hog Island-Captain John Smith Trail Historic District and other adversely affected historic properties. [Stipulation I.d].</p> <p>9) Examination of all available and feasible tower coating and finishing materials and methods that will further minimize and/or maintain the visual intensity of the transmission line infrastructure crossing the river, above and beyond the visibility reduction achieved by standard weathered galvanized steel coatings, that meet and comply with all applicable state and federal law. [Stipulation I.e].</p>
44JC0048	17th Century Cemetery Martin's Hundred	Eligible – Criteria A and D	0	No Adverse Effect	
44JC0649	Indet. Historic	manage as unevaluated	0	No Adverse Effect	
44JC0650	Indet. 18th Cent	manage as unevaluated	0	No Adverse Effect	
44JC0662	18th to 19th Cent Dwelling	Eligible – Criterion D	0	Adverse Effect	Archaeological Data Recovery [Stipulation I.a]. Administered through Dominion.
44JC0751	Prehistoric Camp, 18th to 19th Century Dwelling	Manage as Unevaluated	0	No Adverse Effect	
44JC0826	19th Century Farmstead	Manage as Unevaluated	0	No Adverse Effect	
44NN0060	Indeter. Woodland	Potentially Eligible – Criterion D	0	No Adverse Effect	

DHR ID#	Resource Name/Address	VLR/NRHP Status	Distance	COE Effect Determination	Proposed Mitigation and Project Oversight
44YO0092	Civil War Earthworks	Potentially Eligible – Criterion D	0	No Adverse Effect	
44YO0180	Prehistoric Camp	Manage as Unevaluated	0	No Adverse Effect	
44YO0181	Indet. Late Archaic	Manage as Unevaluated	0	No Adverse Effect	
44YO0183	18th Century Domestic	Manage as Unevaluated	0	No Adverse Effect	
44YO0184	Indet. 19th to 20th Century	Manage as Unevaluated	0	No Adverse Effect	
44YO0233	Civil War Military base	Potentially Eligible – Criterion D	0	No Adverse Effect	
44YO0237	Archaic & Woodland Camp	Manage as Unevaluated	0	No Adverse Effect	
44YO0240	Historic Bridge & Road	Manage as Unevaluated	0	No Adverse Effect	
44YO0592	Mid 18th to 19th Century Military Camp	Potentially Eligible – Criterion D	0	No Adverse Effect	
44YO1059	Prehistoric Camp, Early to Mid-18th Century Dwelling	Potentially Eligible – Criterion D	0	No Adverse Effect	
44YO1129	Historic Dwelling	Manage as Unevaluated	0	No Adverse Effect	
44YO1131	19th Century Dwelling	Manage as Unevaluated	0	No Adverse Effect	
N/A	76 submerged anomalies, managed in 23 buffer areas	Potentially Eligible – Criteria A and D	0	No Adverse Effect	

ATTACHMENT D: KEEPER'S DOE LETTER AND MAP



United States Department of the Interior

NATIONAL PARK SERVICE
1849 C Street, N.W.
Washington, DC 20240

AUG 14 2015

H32(2280)

Mr. William T. Walker
Chief, Regulatory Branch
Department of the Army
U.S. Army Corps of Engineers
Norfolk District
Fort Norfolk
803 Front Street
Norfolk, VA 23510-1011

Dear Mr. Walker:

We have received your letter dated July 2, 2015 (arrived at the National Register of Historic Places on July 6, 2015), requesting a determination of eligibility for the National Register for properties located within the vicinity of the Dominion Virginia Power-proposed Surrey-Skiffes Creek-Wheaton aerial transmission line project. The proposed project calls for construction of 7.4 miles of overhead transmission lines from Surry, Virginia, to a proposed switching station in James City County, Virginia. The proposal calls for the transmission line to cross the James River, thus requiring a permit from the U.S. Army Corps of Engineers, which would constitute a Federal undertaking subject to Section 106 of the National Historic Preservation Act.

You have requested that the National Register provide a determination of eligibility for properties located within the project's "Indirect Area of Potential Effect" (Indirect APE) which the Corps of Engineers defines as having both inland land-based and water-based components. The water-based section of the APE extends from just west of Jamestown Island to include portions of the James River downstream to the Pagan River near Smithfield, VA, and its boundary is drawn to include adjacent lands extending several thousand feet from the river's shoreline. The Indirect APE is defined in U.S. Army Corps of Engineers report *Dominion Virginia Power Surry-Skiffes Creek-Wheaton Proposed 500/230kV Line, NAO-2012-00080/13-V0408*, May 7, 2015, p. 1, (hereafter referred to as *Corps of Engineers report*) and is shown as a blue line drawn on the map titled "Indirect APE Map, Surry-Skiffes Creek-Wheaton Proposed 500/230kVline" included as Enclosure 1 with the Determination of Eligibility request.

This request for a determination of eligibility does not extend to the inland, land-based portion of the Indirect APE, which is comprised primarily of an existing overhead utility right-of-way that extends generally from Skiffes Creek south to Hampton, VA (*Corps of Engineers Report*, p. 1).

All further references in this letter to the Indirect APE should be understood to exclude the inland land-based portion referenced above. You have specifically requested a determination of eligibility for the portion of the Captain John Smith Chesapeake National Historic Trail (CAJO) and the Washington-Rochambeau Revolutionary Route National Historic Trail that are located within the Indirect APE.

The Captain John Smith Chesapeake National Historic Trail (CAJO) was established by Congress in 2006, following a feasibility study by the National Park Service and a determination by the National Park System Advisory Board that the trail was nationally significant. The initial trail route extended approximately 3,000 miles along the Chesapeake Bay and the tributaries of the Chesapeake Bay in the States of Virginia, Maryland, and Delaware, and the District of Columbia; it traced the 1607-1609 voyages of Captain John Smith to chart the land and waterways of the Chesapeake Bay. The trail was extended by order of the Secretary of the Interior in 2012 through designation of four rivers as historic components of CAJO. This action extended the trail by 841 miles to include: the Susquehanna River Component Connecting Trail (a 552-mile system of water trails along the main-stem and West Branch of the Susquehanna River in Maryland, Pennsylvania and New York); the Chester River Component Connecting Trail (a 46-mile system of the Chester River and its major tributaries); the Upper Nanticoke River Component Connecting Trail (23-miles of the Nanticoke River, Broad Creek and Deep Creek); and the Upper James River Component Trail (a 220-mile water trail of the James River in Virginia). CAJO, the first designated national historic trail that is composed primarily of a water trail route, now extends along waterways from Cooperstown, New York, to Norfolk, Virginia.

The Washington-Rochambeau Revolutionary Route National Historic Trail (designated in June 2007) includes over 680 miles of land and water trails that follow the route taken by General George Washington and the Continental Army and French General Jean-Baptiste de Rochambeau and the Expédition Particulière to and from the siege of Yorktown, a pivotal event in the American Revolution. The Washington-Rochambeau Revolutionary Route National Historic Trail passes through Massachusetts, Rhode Island, Connecticut, New York, New Jersey, Pennsylvania, Delaware, Maryland, Washington, D.C., and Virginia.

After considering all documentation submitted, we have determined that the entire area encompassed by the Indirect APE is eligible for the National Register of Historic Places as a historic district under National Register Criteria A, B, C, and D, in the areas of significance of Exploration/Settlement, Ethnic Heritage, and Archeology. This historic district forms a significant cultural landscape associated with both the American Indian inhabitants of the area and the later English settlers.

The English colonization of North America was an extraordinary undertaking which had a profound impact on the Old World and the New and much of what was to come had its origins here along the James River: the establishment and growth of the first permanent English settlement in the New World; some of the earliest and most sustained interactions (both cooperative and antagonistic) between the original inhabitants of the area - the American Indians - and the Europeans; the initial English voyages of discovery which took them throughout the Chesapeake Bay and into the interiors following the numerous rivers and led to expanding

contact with the American Indians and the spread of English settlement; the foundation and development of the tobacco economy which would dominate the Chesapeake Bay world; the introduction and firm establishment of chattel slavery; the architectural evolution of buildings in the James River area from the first crude huts built by the English to the flowering of the dominant Georgian architectural style; and the growth of the unique political and social institutions which would lead to the development of representative democracy and the growing impulse of the colonists to gain independence and self-rule from the corporate founders of the colony and later their royal master the King.

The Indirect APE includes numerous significant historic properties already listed in the National Register of Historic Places including all or parts of: Colonial National Historical Park; Jamestown National Historic Site; Colonial Parkway; Yorktown Battlefield; Kingsmill Plantation (which includes a series of important archeological sites); Carter's Grove National Historic Landmark, one of colonial America's most impressive examples of Georgian architecture (built 1750-1755) noted for its exquisite brickwork and finely crafted, fully-paneled interior; the archeological site of Martin's Hundred located at Carter's Grove (established in 1619 as one of the earliest English settlements outside of Jamestown Island, it was destroyed in the American Indian uprising of 1622); and a number of other archeological sites. A significant contributing feature of the district is Hog Island, which was fortified in 1609 to help defend Jamestown Island. In a letter dated March 11, 2015, to the Corps of Engineers, the Virginia State Historic Preservation Office notes that three 17th century archeological sites have been identified on Hog Island and that in their opinion the island is individually eligible for the National Register. In addition to the properties enumerated above, the Virginia State Historic Preservation Office, in letters dated June 12, 2014, and June 19, 2015, to the Corps of Engineers, identify an additional twelve properties within the Indirect APE which are either listed in the National Register or they are considered to be potentially eligible (including the James River National Defense Reserve Fleet, also known as the Ghost Fleet).

The Indirect APE encompasses a portion of the Captain John Smith Chesapeake National Historic Trail (CAJO). The boundary of CAJO extends from shore to shore of the James River. Jamestown Island and Hog Island (an isthmus) are located within the James River and are thus within the boundary of CAJO.

The National Park System Advisory Board in March, 2006, found that the trail was nationally significant for its association with the following historic patterns of events:

- Captain John Smith's Chesapeake Bay voyages are nationally significant because they accelerated the process that destroyed the Powhatan polity and disrupted the native people's world throughout the region.

The Water Trail is significant as:

- a) the route that John Smith followed in his voyages to American Indian towns and territories;
- b) a symbol of the independence of the English colonists from Powhatan's control;
- c) a symbol of the impact on and eventual collapse of the Powhatan polity

and the native peoples' world of the Chesapeake Bay and beyond.

- Captain John Smith's Chesapeake Bay voyages are nationally significant because of their impact on the exploration and settlement of North America.

The Water Trail is significant as:

- a) the route that John Smith followed in his program of exploration and discovery in the Chesapeake Bay and its tributaries;
- b) a symbol of the spirit of adventure and wonder that were important components of Smith's voyages and the English exploration;
- c) the route by which Smith gathered information vital to the survival and growth of the English settlements in North America.

- Captain John Smith's Chesapeake Bay voyages are nationally significant because of their impact on the commerce and trade of North America.

The Water Trail is significant as:

- a) the route by which John Smith surveyed the Bay and explored for gold, silver, copper, and the Northwest Passage, for the benefit of the commerce and trade of the colony and England;
- b) the route by which Smith made contact with American Indian tribes, established trade agreements with them, and increased the chances that the English colony would survive;
- c) a symbol of England's trading power, soon to be increased by the production of tobacco for export from the colony;
- d) a symbol of the long-term impact on the cultural contact between the native peoples and European colonists.

This segment of CAJO is among the most historically significant portions of the overall National Historic Trail's 3,000 plus miles of waterways. Jamestown was the starting and ending point for all of Smith's voyages and was Smith's base of operations and center of political power over the new colony. Properties within and along this segment of the trail are directly associated with the historic patterns of events for which the trail was found to be nationally significant and thus this section of the trail itself is eligible for the National Register of Historic Places as a contributing element in the larger historic district defined by the Indirect APE boundary.

We note that the Virginia State Historic Preservation Office, in a letter to the Corps of Engineers dated May 11, 2015, advised that, in their opinion, what they describe as an eligible cultural landscape within the APE may extend further upstream beyond the boundary of the Indirect APE. We do not have sufficient information to evaluate properties upstream from the district at this time.

As to the Washington-Rochambeau Revolutionary Route National Historic Trail, no information has been provided with this determination of eligibility request regarding the trail section located within the APE, thus we cannot provide a determination of the trail's eligibility.

Please let us know if you have any questions concerning this determination of eligibility.

Sincerely,



Stephanie S. Toothman, Ph.D.
Associate Director, Cultural Resources, Partnerships,
and Science
Keeper, The National Register of Historic Places

Enclosure

IDENTICAL LETTER SENT TO:

Cc: Ms. Julie Langan
State Historic Preservation Officer
Department of Historic Resources
2801 Kensington Avenue
Richmond, VA 23221

Mr. Frank Hays
Acting Associate Regional Director, Stewardship
United States Department of the Interior
National Park Service
Northeast Region
United States Custom House
200 Chestnut Street
Philadelphia, PA 19106

Mr. Charles Hunt
Superintendent
United States Department of the Interior
National Park Service
Chesapeake Bay Office
410 Severn Avenue, Suite 314
Annapolis, MD 21403

Ms. Charlene Dwin Vaughn, AICP
Assistant Director
Federal Permitting, Licensing and Assistance Section
Office of Federal Agency Programs
Advisory Council on Historic Preservation
401 F Street NE, Suite 308
Washington, DC 20001-2637

Ms. Stephanie Meeks
National Trust for Historic Preservation
The Watergate Office Building
2600 Virginia Avenue NW, Suite 1100
Washington, DC 20037

Ms. Sharee Williamson
Associate General Council
National Trust for Historic Preservation
The Watergate Office Building
2600 Virginia Avenue NW, Suite 1100
Washington, DC 20037

Mr. Randy Steffey, Environmental Scientist
US Army Corps of Engineers - Southern Virginia Regulatory Section
803 Front Street
Norfolk, VA 23510

Ms. Courtney R. Fisher
Sr. Siting and Permitting Specialist
Dominion Virginia Power
701 East Cary Street
Richmond, VA 23219

Ms. Pamela Goddard
Senior Manager
Chesapeake & Virginia Program
National Parks Conservation Association
777 6th Street, NW, Suite 700
Washington, DC 20001-3723

Leighton Powell
Executive Director
Scenic Virginia
4 East Main Street, Suite 2A
Richmond, VA 23219

Mr. Edward A. Chappell
Shirley and Richard Roberts Director
of Architecture and Archaeological Research
The Colonial Williamsburg Foundation
P.O. Box 1776
Williamsburg, VA 23187-1776

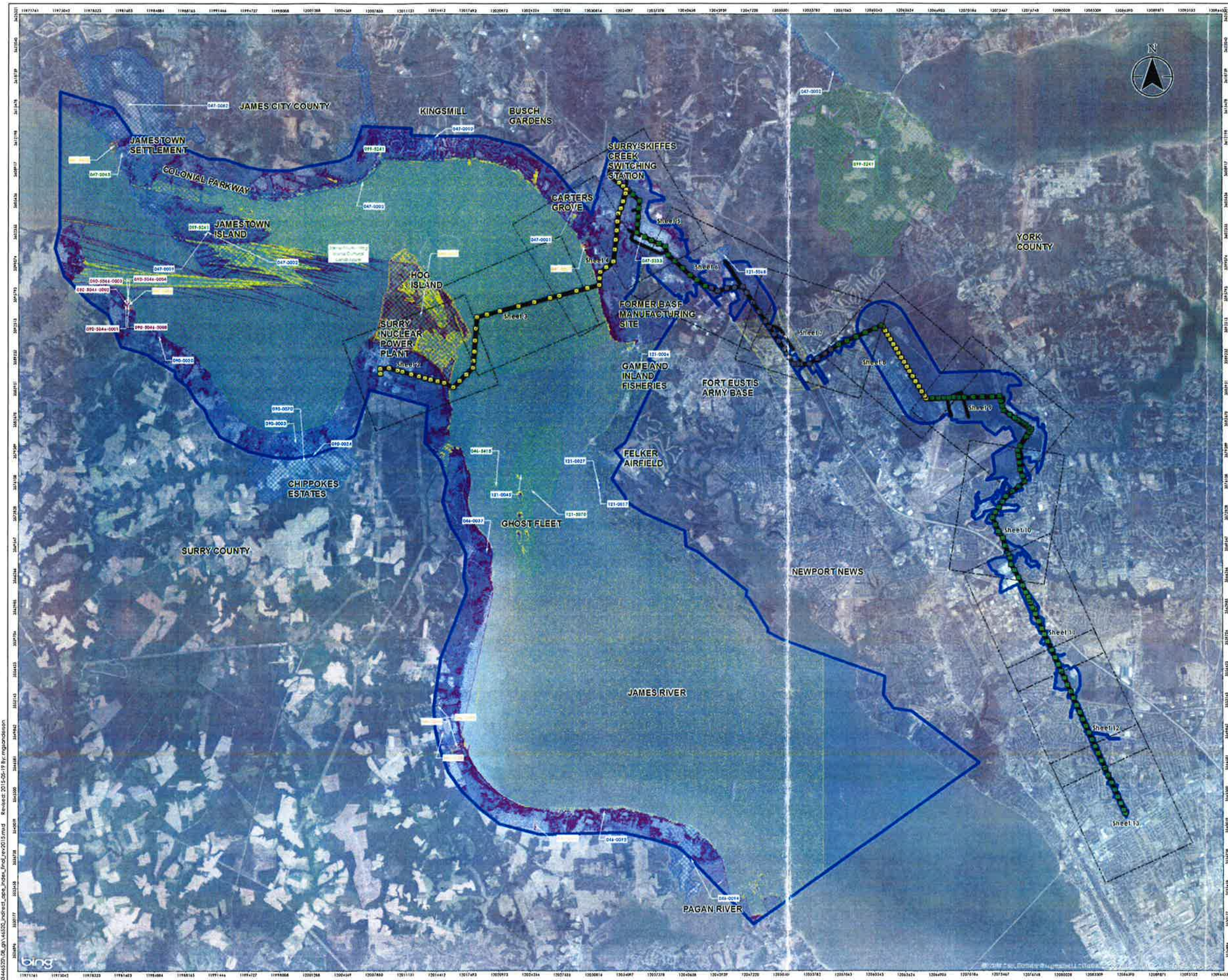
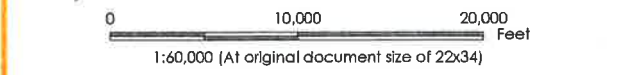


Figure No. **1**
 Title: **Indirect APE Map - Architectural Resources**
 Submitted: 2014-09-08
 Revised: 2015-05-19

Client/Project: Dominion Virginia Power
 Surry-Skiffes Creek-Wheaton
 Proposed 500/230 kV Line
 Project Location: James City County, Surry County, York County, City of Newport News, and City of Hampton, Virginia
 Prepared by MGS on 2015-05-19
 Technical Review by CPG on 2015-05-19
 Independent Review by CFC on 2015-05-19



- Direct APE
- Indirect APE
- JRV1 Viewshed Analysis - Not Visible
- JRV1 Viewshed Analysis - Visible
- Sheet Index
- Architectural Resources**
 - Resource Listed on NRHP
 - Resource Not Individually Eligible, Contributing to Scotland Wharf Historic District
 - Resource Potentially Eligible for Listing on NRHP
 - Resource Eligible for Listing on NRHP
- Structure Activity**
 - Replacement with ≤ 10% or 20 Feet Change in Height
 - Reconstructor Existing Structure
 - New Structure or Replacement with > 10% or 20 Feet Change in Height

US Army Corps of Engineers
 Norfolk District Regulatory Office
 Received by: RLS
 Date: May 20, 2015



- Notes**
1. Coordinate System: NAD 1983 StatePlane Virginia South FIPS 4502 Feet
 2. Tower Locations and Project Limits provided by Dominion Virginia Power
 3. Orthoimagery © Bing Maps
 4. Only historic properties under the authority of Section 106 are shown. National Register of Historic Places eligibility status provided by the Corps with DHR concurrence on May 1, 2015 and May 11, 2015.
 5. Microsoft product screen shot(s) reprinted with permission from Microsoft Corporation



U:\203445620\08_gis\46520_norfolk\case_data\prod\rv015.mxd Revised: 2015-05-19 By: mgpanderson

ATTACHMENT E: CORPS' SECTION 106 CONSULTATION AND PUBLIC INVOLVEMENT PLAN

Section 106 Consultation and Public Involvement Plan
Dominion Virginia Power's Surry - Skiffes Creek - Whealton Project
NAO-2012-00080 / 13-V0408

Introduction

Dominion proposes to construct a new high voltage aerial electrical transmission line, known as the Surry-Skiffes Creek -Whealton project. The proposed project consists of three components; (1) Surry – Skiffes Creek 500 kilovolt (kV) aerial transmission line, (2) Skiffes Creek 500 kV – 230 kV – 115 kV Switching Station, and (3) Skiffes Creek – Whealton 230 kV aerial transmission line. In total, the proposed project will permanently impact 2,712 square feet (0.06 acres) of subaqueous river bottom and 281 square feet (0.01 acres) of non-tidal wetlands, and convert 0.56 acres of palustrine forested wetlands to scrub shrub non-tidal wetlands. (See *Exhibit 1*)

Dominion indicates the proposed project is necessary to ensure continued reliable electric services, consistent with North American Electric Reliability Corporation (NERC) Reliability Standards, are provided to its customers in the North Hampton Road Load Area. The NHRLA consist of over 285,000 customers, including Newport News Shipbuilding, Joint Base Langley-Eustis, Yorktown Naval Weapons Station, NASA, Cannon, and Thomas Jefferson National Accelerator Facility.

A permit is required from the Norfolk District Corps of Engineers under Section 404 of the Clean Water Act and Section 10 of the Rivers and Harbors Act of 1899, and constitutes a Federal undertaking, subject to Section 106 of the National Historic Preservation Act (NHPA). Section 106 of the NHPA requires Federal agencies to take into account the effects of their actions, including permitted actions, on historic properties.

In accordance with Section 106 of the National Historic Preservation Act (36 Code of Federal Regulations [CFR] 800.2), USACE will provide opportunities for consulting parties and the general public to provide comments concerning project effects on properties and districts listed or eligible for listing in the National Register of Historic Places (NRHP).

Key elements of the Section 106 process include USACE's plan to integrate Section 106 with other environmental reviews, in accordance with 36 CFR 800.3(b), and the plan for conducting consultation and public involvement per the requirements of 36 CFR 800.3 (e) and (f). This document provides further detail about how USACE will integrate reviews and conduct consultation and public involvement.

Approach

In accordance with the requirements of National Environmental Policy Act (NEPA) and Section 106, USACE solicited public comments on the undertaking via public notice on August 28, 2013. These comments helped facilitate the initial steps of Section 106

review process and will be considered when preparing an Environmental Assessment (EA) for NEPA compliance. The public notice also provided interested members of the public with an opportunity to comment on the identification of historic properties and potential effects. The Corps intends to use the studies and information generated during the Virginia State Corporation Commission's review of Dominion's proposed project to inform, not to replace, the Section 106 consultation process. USACE will continue to coordinate with agencies and organizations that have demonstrated an interest in cultural resource impacts resulting from the undertaking.

USACE will continue to provide the public with information about the undertaking and its effects on historic properties, and seek their comment and input at various steps of the process. Members of the public may provide views on their own initiative for USACE officials to consider during the decision-making process.

Public Involvement

Opportunities for public comment regarding historic resource identification and potential effects have previously been provided through USACE's August 28, 2013, November 13, 2014, and May 21, 2015 public notices. Requests for a public hearing due to concerns regarding historic resources, in addition to other issues, were acknowledged by USACE. After careful consideration, USACE conducted a hearing on October 30, 2015. During the 106 process, general information has been, and continues to be, available for review at <http://www.nao.usace.army.mil/Missions/Regulatory/SkiffesCreekPowerLine.aspx>. Our website also contains links to the applicant's and consulting party websites, which contain additional project information and perspectives on the project.

Consulting Parties

As a result of the August 2013 Public Notice and the State Corporation Commission review process, USACE, in coordination with the SHPO, identified organizations that have a demonstrated interest in the treatment of historic properties associated with this undertaking. In addition to those requests received in response to the public notice, Kings Mill Community Services Association and Southern Environmental Law Center were also invited to participate as consulting parties in a letter dated March 5, 2014. On June 20, 2014, USACE notified local governments within the limits of the project (Surry County, City of Williamsburg, York County, City of Newport News, and City of Hampton) by mail, inviting their participation as consulting parties. To date, these parties have not responded positively to their participation invitation. A separate invite included First California Company Jamestowne Society who has accepted the invite to participate. On November 25, 2014, written correspondence was received from the new steward of Carter Grove Plantation indicating an inability to participate at this time. Any organization invited to be a consulting party may elect to participate in current and future steps of the process (but not previous steps) at any time.

At the initial stages of the project, when consulting parties were invited (summer, 2014), the Commonwealth of Virginia had no federally recognized tribes within its state

boundaries. However, based on coordination through other projects, the Delaware Tribe of Indians, the Delaware Nation, and the Catawba Indian Nation had expressed an interest in Virginia. In an effort to consider tribal interest, USACE consulted on August 25, 2014 with the aforementioned federally recognized Tribes on a government to government basis. In addition, USACE coordinated with the following state recognized tribes to determine their interest in participating as consulting parties: Cheroenhaka, Chickahominy, Eastern Chickahominy, Mattaponi, Upper Mattaponi, Nansemond, Nottoway, and Rappahannock Tribes. The Pamunkey Tribe, which became federally recognized on January 28, 2016, was consulted on August 25, 2014 when the tribe was state-recognized. Dominion's consultants developed a summary of the historic properties, with an emphasis on those with prehistoric Native American components, which was provided with the August 25, 2014 coordination letters USACE provided to the tribes. On October 5, 2016, Chief Gray with the Pamunkey Indian Tribe reached out to USACE requesting to participate. USACE immediately acknowledged and accepted the Tribes request.

Throughout the process, USACE has maintained a complete list of active "Consulting Parties" (See *Attachment A*). Consulting parties have been afforded an opportunity to comment on identification of historic properties, effect recommendations, proposed measures to avoid or minimize effects and suggested mitigation options for historic properties that would be adversely affected.

Meetings

On September 25, 2014, December 9, 2014, June 24, 2015, October 15, 2015, and February 2, 2016 USACE, SHPO, ACHP, and consulting parties have held Section 106/110 National Historic Preservation Act Meeting at Legacy Hall, 4301 New Town Avenue, Williamsburg, VA 23188. General meeting objectives:

September 25th:

- Status of permit evaluation
- Corps jurisdiction
- Project Overview, Purpose & Need, Alternatives, Construction Methods
- Historic Property Identification Efforts
- Potential Effects on historic properties

December 9th:

- General Item Updates
- Historic Property Identification
- Historic Property Eligibility
- Potential Effects
- Potential Mitigation

June 24th:

- General Updates
- Resolution of Adverse Effects
 - Avoidance, Minimization, Mitigation Considerations/Measures

- Feedback/Ideas
- October 15th:
- General Updates
 - NPS Visual Effects Analysis
 - Stantec Consolidated Effects Report
 - Resolution of Adverse Effects
- February 2nd:
- General Updates
 - Resolution of Adverse Effects

Numerous additional meetings have been held between various consulting parties at various stages in the process.

Resolution of Adverse Effects

MOA development process has included requests for written comments from all consulting parties on draft MOA's that were circulated December 30, 2015 and June 13, 2016, and discussions of resolution of adverse effects at several consulting party meetings.

After consideration of comments, a revised draft MOA was shared with consulting parties on December 7, 2016. This coordination may be the final opportunity to inform a decision on whether Dominion's proposed mitigation plan adequately avoids, minimizes, and/or mitigates adverse effects to historic properties. At the conclusion, the Corps will use the input received to inform a decision on whether to fulfill responsibilities under Section 106 of the NHPA through either an executable MOA or termination of consultation. A teleconference may be scheduled at a later date to discuss mitigation if it is determined to be beneficial.

At this time, it is anticipated that the MOA signatories (including invited signatories) would include USACE, SHPO, ACHP and Dominion. It is also expected that all other consulting parties would be invited to concur in an MOA.

Milestones and Tracking

A list of major milestones in the Section 106 review of the undertaking is provided as an attachment to this document (*See Attachment B*). The milestones table will be updated throughout the review process and distributed to the SHPO, ACHP, Consulting Parties, and Dominion as deemed necessary by USACE.

USACE's Section 106 consultants will receive, track, and organize the responses received in conjunction to various steps throughout the process.

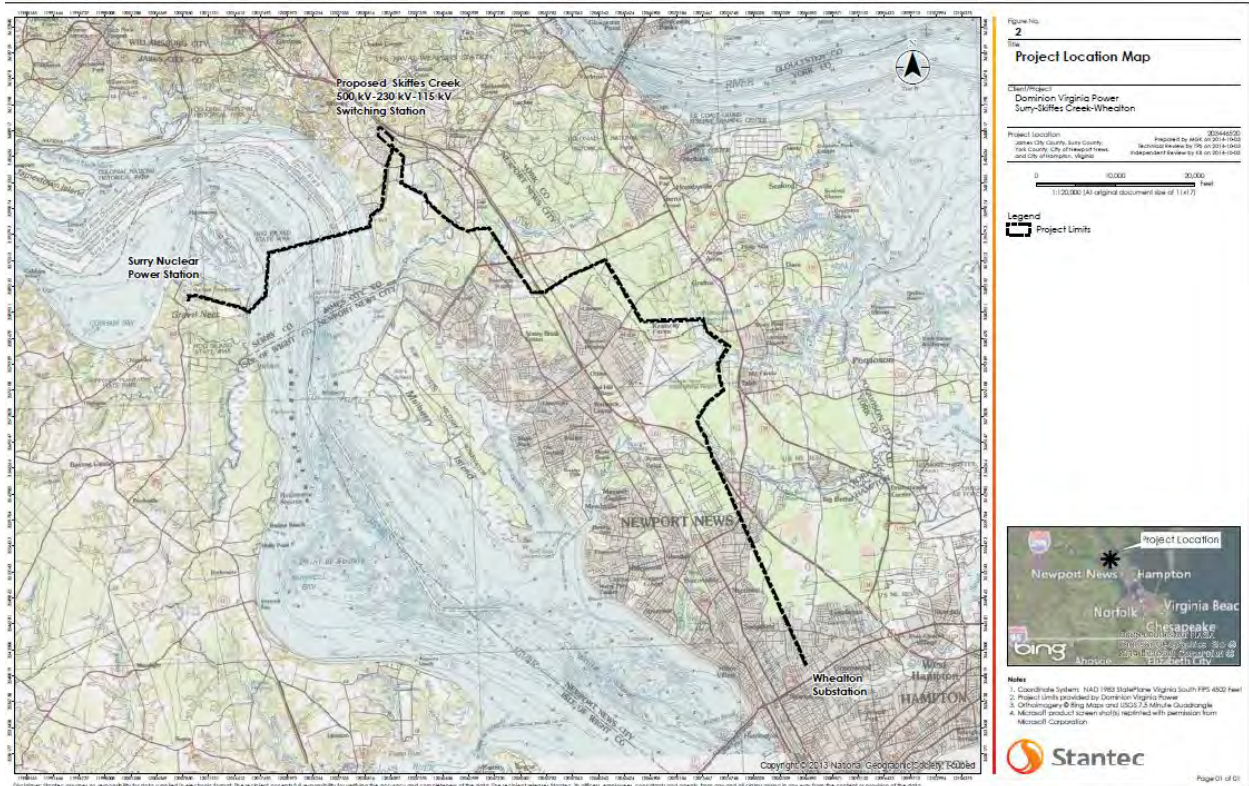


Exhibit 1: Project Location

Attachment A: Section 106 List of POC's (updated as of 12-08-16)

- USACE; Randy Steffey (Project Manager) – randy.l.steffey@usace.army.mil
- Applicant/Agents;
 1. Dominion (applicant); Courtney Fisher – courtney.r.fisher@dom.com
 2. Stantec (agent); Corey Gray – corey.gray@stantec.com , Dave Ramsey – dave.ramsey@stantec.com , and Ellen Brady – ellen.brady@stantec.com
- VDHR (SHPO); Roger Kirchen – roger.kirchen@dhr.virginia.gov and Andrea Kampinen – andrea.kampinen@dhr.virginia.gov
- ACHP; John Eddins – jeddins@achp.gov
- Other Consulting Parties
 1. National Parks Conservation Association; Pamela E. Goddard & Joy Oakes - pgoddard@npca.org and joakes@npca.org
 2. Save The James Alliance; Wayne Williamson & James Zinn - taskforce@savethejames.com
 3. Chesapeake Conservancy; Joel Dunn - jdunn@chesapeakeconservancy.org
 4. United States Department of the Interior (National Park Service, Colonial National Historic Park); Elaine Leslie – Elaine_leslie@nps.gov
Rebecca Eggleston – becky_eggleston@nps.gov
Jonathan Connolly – jonathan_connolly@nps.gov
Dorothy Geyer – Dorothy_geyer@nps.gov
Kym A. Hall – kym_hall@nps.gov
 5. United States Department of the Interior (National Park Service, North East Region); Mike Caldwell – mike_caldwell@nps.gov - c/o: mary_morrison@nps.gov
Others – Captain Johns Smith National Historic Trail: Charles_hunt@nps.gov
Washington-Rochambeau Revolutionary Route: joe_dibello@nps.gov
Carters Grove National Historic Land Mark: bonnie_halda@nps.gov and NPS_NHL_NERreview@nps.gov
 6. James City County; Bryan J. Hill, County Administrator – c/o: Max Hlavin & Liz Young – Maxwell.Hlavin@jamescitycountyva.gov and Liz.Young@jamescitycountyva.gov
 7. The Colonial Williamsburg Foundation; Mitchell Reiss - mreiss@cwf.org (Pending)
 8. Preservation Virginia; Elizabeth S. Kostelny - ekostelny@preservationvirginia.org
 9. Scenic Virginia; Leighton Powell - leighton.powell@scenicvirginia.org
 10. National Trust for Historic Preservation; Robert Nieweg - rnieweg@savingplaces.org
 11. Christian & Barton, LLP on behalf of BASF Corp; Michael J. Quinan - mquinan@cblaw.com
 12. James River Association; Jamie Brunkow jbrunkow@jrava.org
 13. American Battlefield Protection Program (National Park Service); Elizabeth (Ries) Vehmeyer – Elizabeth_vehmeyer@nps.gov
 14. First California Company Jamestowne Society; James McCall – jhmccall1@gmail.com
 15. Delaware Tribe Historic Preservation Representatives – Susan Bachor; temple@delawaretribe.org
 16. Chickahominy Tribe – Chief Stephen Adkins; stephenradkins@aol.com
 17. Council of Virginia Archaeologist (COVA) – Jack Gary; jack@poplarforest.org
 18. Margaret Nelson Fowler (Former POC under STJA) – onthepond1@gmail.com
 19. Pamunkey Indian Tribe – Chief Robert Gray; Rgray58@hughes.net

=====

Attachment B: Section 106 Milestones

Milestone	Initiation Date	Description	Completion Date
Initial Public Notice (800.3)	August 28, 2013	<ul style="list-style-type: none"> - Established Undertaking - Identified SHPO (VDHR) - Requested Public Comment - Identified Cultural Resources of Concern 	<ul style="list-style-type: none"> • Comment period closed September 28, 2013
Identify Consulting Parties (800.3)	August 28, 2013	<ul style="list-style-type: none"> - August 28, 2013 Public Notice Issued - Dec 3, 2013 Compiled list based on PN & coordinated w/ SHPO for any add'l parties - Mar 3, 2014 notified all requesting parties of their acceptance - Mar 5, 2015 Add'l Party Invites were sent based on SHPO recommendations - June 20, 2014 sent invites to Local Governments to participate - August 25, 2014 invited Tribes to Participate - November 21, 2014 invited Mr. Menco, new owner of Carters Grove Plantation, to participate. - October 6, 2016 Pamunkey Indian Tribe joined as a Consulting Party. 	<ul style="list-style-type: none"> • Process will remain open until the conclusion of the Section 106 process; however any new parties will only be afforded the opportunity to join the process at its present stage moving forward.
Identify Historic Properties (800.4)	August 28, 2013	<ul style="list-style-type: none"> - August 28, 2013 Public Notice - Established APE w/ SHPO <ul style="list-style-type: none"> ➢ Initial APE concurrence Jan 28, 2014 ➢ Refined APE into Direct & Indirect boundaries; rec'd concurrence (verbal) Sept 2014, written Jan 15, 2015 ➢ Minor modification to Direct APE; concurrence Oct 5, 2015 (5 tower locations) ➢ Direct APE Exhibits were refined to accurately depict boundary around proposed fender protection systems; June 28, 2016 - Consulted surveys/data used in part for the VA State Corporation Commission process - May 8, 2014 coordinated w/ SHPO, ACHP, & Consulting Parties on Historic Property Identification, Surveys, and potential effects. - Re-coordinated June 20, 2014 with SHPO, ACHP, & Consulting Parties to finalize Historic Property Identification - Sept 25th & Dec 9th Consulting Party Meetings - November 13, 2014 Public Notice - Comments rec'd were considered in part from the multiple coordination opportunities. - May 1st & May 11, 2015 SHPO provided completion of 800.4. - Sept 4, 2015 SHPO concurrence with Addendum to Phase I Cultural Resources Report for five (5) tower locations not included in previous studies. - June 24, 2016 SHPO concurrence with Revised Phase I Remote Sensing Underwater Archaeological Survey & Phase II assessment for buffer and 	<ul style="list-style-type: none"> • Initially completed May 11, 2015 • Updated Oct 5, 2015 to reflect minor APE expansions due to project modifications • Updated June 28, 2016 to capture Direct APE expansion and additional underwater survey work within the James River.

		cluster anomalies located within 200 feet of any construction activities.	
1 st Agency & Consulting Party Meeting (800.4)	September 25, 2014	<ul style="list-style-type: none"> - Status of permit evaluation - Corps jurisdiction - Project Overview, Purpose & Need, Alternatives, Construction Methods - Historic Property Identification Efforts - Potential Effects on historic properties 	<ul style="list-style-type: none"> • September 25, 2014
2 nd Public Notice (800.4)	November 13, 2014	<ul style="list-style-type: none"> - Requested Public Comment on Historic Property Identification and Alternatives 	<ul style="list-style-type: none"> • Comment Period Closed December 6, 2014
2 nd Agency & Consulting Party Meeting (800.4)	December 9, 2014	<ul style="list-style-type: none"> - General Item Updates - Historic Property Identification - Historic Property Eligibility - Potential Effects - Potential Mitigation ➤ Requested written comments on identification, alternatives, effects, and potential mitigation from meeting participants. 	<ul style="list-style-type: none"> • Comment Period closed January 15, 2015
Evaluate Historic Significance (800.4)	May 8, 2014	<ul style="list-style-type: none"> - Several Historic Properties previously Listed on the National Register or determined Eligible. - June 12, 2014 SHPO provided recommendations of eligibility for certain properties and requested additional information on others. - September 2014- February 2015: Stantec conducted additional cultural resource surveys, submitted reports and other documentation. - May 11, 2015 SHPO provided final concurrence pertaining to individual eligibility for all identified historic resources. - July 2, 2015 Consulted with Keeper of the National Register on eligibility status of Captain John Smith Trail <ul style="list-style-type: none"> ➤ Aug 14, 2015 decision rendered by Keeper. - June 24, 2016 SHPO provided concurrence with additional Underwater Archaeological Survey work; including a Not Eligible determination based on the results of Phase II assessment for buffer and cluster anomalies located within 200 feet of any construction activities. <p>Note: Oct 22, 2015 Letter from NPS indicated satisfaction with USACE that CFR 800.4 was completed.</p>	<ul style="list-style-type: none"> • Initially Completed May 11, 2015 • Updated Aug 14, 2015 upon receipt of Keeper of the NPS Eligibility Determination • Updated June 24, 2016 upon receipt of SHPO Eligibility Concurrence with Phase II Underwater Archaeological Assessments.
Assessment of Adverse Effects (800.5)	May 11, 2015	<ul style="list-style-type: none"> - Applied Criteria of Adverse Effects in consultation with SHPO, considering views of consulting parties and public <ul style="list-style-type: none"> ➤ Dominion's Effects Reports; which included visual assessments (Mar 2014, Oct 29, 2014, & Nov 10, 2014) ➤ Consulting Party Effects Analyses - May 21, 2015 Public Notice determined undertaking will have an Overall Adverse Effect <p>Note: Nov 13, 2015 SHPO concurred with USACE that undertaking will have an Adverse Effect confirming the process is at 800.6 "resolution of adverse effect"</p>	<ul style="list-style-type: none"> • Completed May 21, 2015
3 rd Public Notice (800.6)	May 21, 2015	<ul style="list-style-type: none"> - Request Public Comments on effects to final list of historic properties and in 	<ul style="list-style-type: none"> • Comment Period Closed June 20, 2015

		preparation to moving to resolution of adverse effects.	
3 rd Agency & Consulting Party Meeting (800.6)	June 24, 2015	<ul style="list-style-type: none"> - General Updates - Effects to individual historic properties - Resolution of Adverse Effects 	<ul style="list-style-type: none"> • June 24, 2015
4 th Public Notice (800.6)	October 1, 2015	<ul style="list-style-type: none"> - October 1, 2015 Announced Public Hearing seeking input on views, opinions, and information on the proposed project. - November 5, 2015 Extension of PN comment period 	<ul style="list-style-type: none"> • Comment Period Closed November 13, 2015
Resolve Adverse Effects (800.6)	May 21, 2015; Restated Oct 13, 2015	<ul style="list-style-type: none"> - May 21, 2015 Public Notice requested comments on Resolution of Adverse Effects. - May 29, 2015 consulted with the Director NPS in accordance with 36 CFR 800.6 and 800.10 re: Carters Grove NHL and adverse effects. (No Response To date) - June 24, 2015 Consulting Party Meeting - October 1, 2015 provided Consulting Parties with Dominion Consolidated Effects Report (CER) dated September 15, 2015 and stamped rec'd by USACE Sept 29, 2015. <ul style="list-style-type: none"> ➤ CER was developed to address comments from VDHR and Consulting Parties. - October 15, 2015 Consulting Party Meeting - December 30, 2015 consulted with SHPO, ACHP, & Consulting Parties to seek input on Dominion's Draft MOA with Mitigation Stipulations and Context Document - January 6, 2016 Dominion's response to comments regarding the December 30th MOA coordination were provided to SHPO, ACHP, and Consulting Parties by email. - Feb 2, 2016 Consulting Party Meeting - Feb 17, 2016 SHPO gave their concurrence with the Jan 29th tables forwarded ahead of Feb 2nd Consulting Party Meeting that show effect determinations for individual historic properties. - June 13, 2016 consulted with SHPO, ACHP, and Consulting Parties to seek input on Dominion's Draft MOA and Context Document. - December 7, 2016 consulted with SHPO, ACHP, and Consulting Parties to seek input on Dominion's Draft MOA. - December 12, 2016 Dominion's response to MOA comments regarding the June 13th coordination were provided by email, along with revised Context document and MOA attachments, to SHPO, ACHP, and Consulting Parties. 	<ul style="list-style-type: none"> • Ongoing
4 th Agency & Consulting Party Meeting (800.6)	October 15, 2015	<ul style="list-style-type: none"> - General Updates - NPS Visual Effects Analysis - Stantec Consolidated Effects Report - Resolution of Adverse Effects <ul style="list-style-type: none"> ➤ Requested written comments on adverse effects from meeting participants. 	<ul style="list-style-type: none"> • Comment Period Closed November 12, 2015

Public Hearing (800.6)	October 30, 2015	- Hearing held for the purpose of seeking input on views, opinions, and information on the proposed project.	<ul style="list-style-type: none"> • Comment Period Closed November 13, 2015
5 th Consulting Party Meeting (800.6)	February 2, 2016	<ul style="list-style-type: none"> - General Updates - Resolution of Adverse Effects <p>TOPICS:</p> <ul style="list-style-type: none"> ➤ Cumulative Effects ➤ Architectural Viewshed &. Cultural Landscape ➤ Socioeconomic Impacts ➤ Visitor Experience ➤ Tourism Economy Impacts ➤ CAJO Evaluated on its Own Merit ➤ Submerged Cultural Resources ➤ Washington Rochambeau Revolutionary Trail 	<ul style="list-style-type: none"> • February 2, 2016