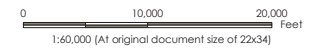


Figure No. **1**  
**Direct APE Map-  
 Archaeological Resources**  
 Submitted: 2014-09-08  
 Revised: 2015-05-21

Client/Project  
 Dominion Virginia Power  
 Surry-Skiffes Creek-Wheaton  
 Proposed 500/230 kV Line  
 Project Location 203445620  
 James City County, Surry County, Prepared by MGS on 2015-05-19  
 York County, City of Newport News, Technical Review by CFC on 2015-05-19  
 and City of Hampton, Virginia Independent Review by CFC on 2015-05-19



- Direct APE
- Sheet Index
- Archaeological Resources**
  - Resource to be Managed as Unevaluated for Listing on NRHP
  - Resource Potentially Eligible for Listing on NRHP
  - Resource Eligible for Listing on NRHP
  - Underwater Buffer of Anomalies to be Managed as Unevaluated for Listing on NRHP
- Structure Activity**
  - Replacement with ≤ 10% or 20 Feet Change in Height
  - Reconductor Existing Structure
  - New Structure or Replacement with > 10% or 20 Feet Change in Height

US Army Corps of Engineers  
 Norfolk District Regulatory Office  
 Received by: H.S.  
 Date: May 21, 2015



- Notes**
1. Coordinate System: NAD 1983 StatePlane Virginia South FIPS 4502 Feet
  2. Tower Locations and Project Limits provided by Dominion Virginia Power
  3. Orthoimagery © Bing Maps
  4. Only historic properties under the authority of Section 106 are shown. National Register of Historic Places eligibility status provided by the Corps with DHR concurrence on May 1, 2015.
  5. Microsoft product screen shot(s) reprinted with permission from Microsoft Corporation



1:\2014\45620\05\_01\_15\45620-Direct APE Map- Archaeological Resources.dwg, Plot Date: 05/21/15, 11:58:52 AM, User: jg...

Disclaimer: Stantec assumes no responsibility for data supplied in electronic format. The recipient accepts full responsibility for verifying the accuracy and completeness of the data. The recipient releases Stantec, its officers, employees, consultants and agents, from any and all claims arising in any way from the content or provision of the data.

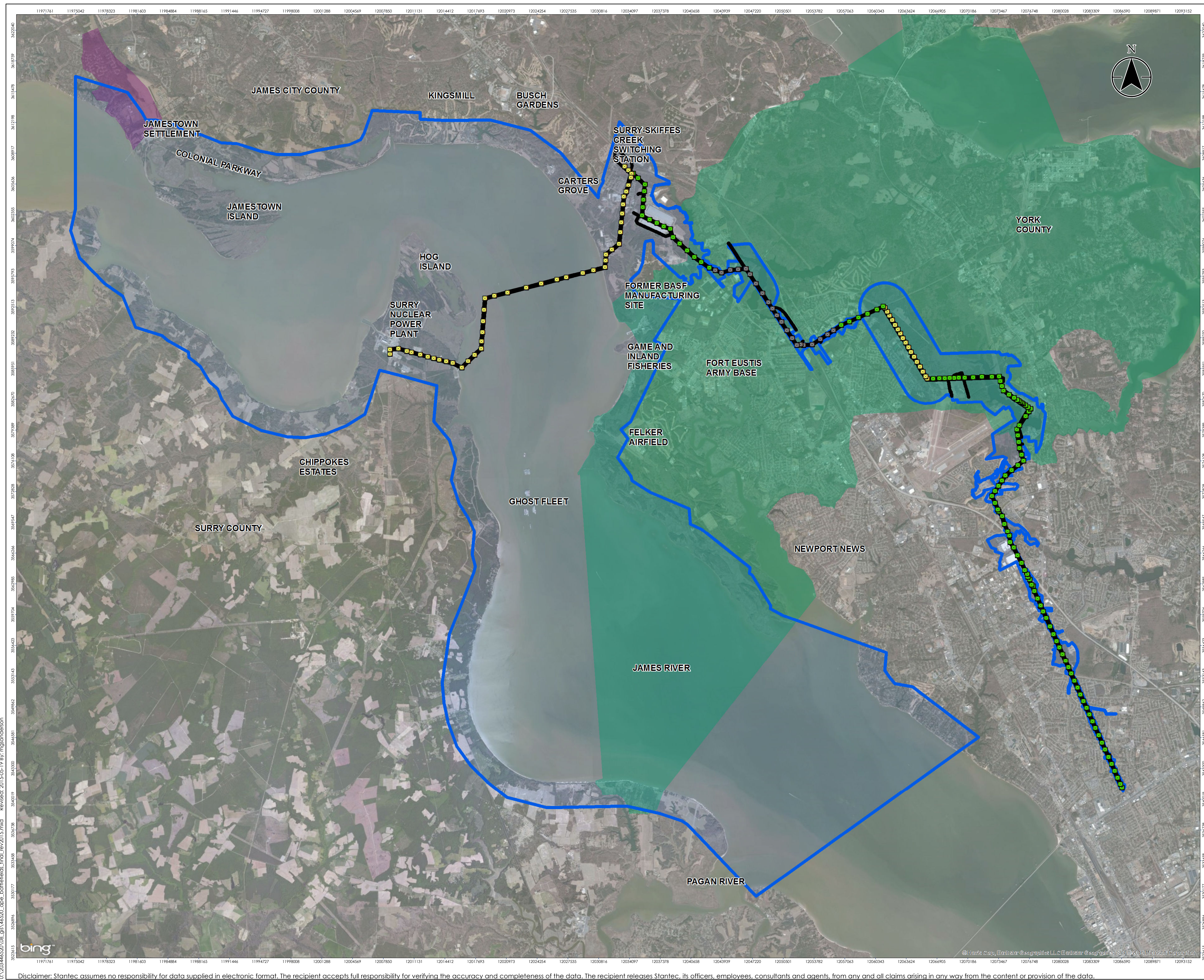


Figure No.  
**1**

Title  
**APE Map - Battlefields**

Submitted: 2014-09-08  
Revised: 2015-05-19

Client/Project  
Dominion Virginia Power  
Surry-Skiffes Creek-Wheaton  
Proposed 500/230 kV Line

Project Location  
James City County, Surry County, York County, City of Newport News, and City of Hampton, Virginia

203445620  
Prepared by MGS on 2015-05-19  
Technical Review by CPG on 2015-05-19  
Independent Review by CFC on 2015-05-19

0 10,000 20,000 Feet  
1:60,000 (At original document size of 22x34)

- Direct APE
  - Indirect APE
  - Battle of Green Spring
  - Battle of Yorktown
- Structure Activity**
- Replacement with ≤ 10% or 20 Feet Change in Height
  - Reconductor Existing Structure
  - New Structure or Replacement with > 10% or 20 Feet Change in Height

US Army Corps of Engineers  
Norfolk District Regulatory Office  
Received by: RLS  
Date: May 20, 2015



- Notes**
1. Coordinate System: NAD 1983 StatePlane Virginia South FIPS 4502 Feet
  2. Tower Locations and Project Limits provided by Dominion Virginia Power
  3. Orthoimagery © Bing Maps
  4. Only historic properties under the authority of Section 106 are shown. National Register of Historic Places eligibility status provided by the Corps with DHR concurrence on May 1, 2015.
  5. Microsoft product screen shot(s) reprinted with permission from Microsoft Corporation



U:\2014\4620\08\_gis\4620\_ape\_battlefields\_final\_rev2015.mxd  
Reviewed: 2015-05-19 By: mpanard@usace.army.mil  
© 2014 Microsoft Corporation  
Disclaimer: Stantec assumes no responsibility for data supplied in electronic format. The recipient accepts full responsibility for verifying the accuracy and completeness of the data. The recipient releases Stantec, its officers, employees, consultants and agents, from any and all claims arising in any way from the content or provision of the data.