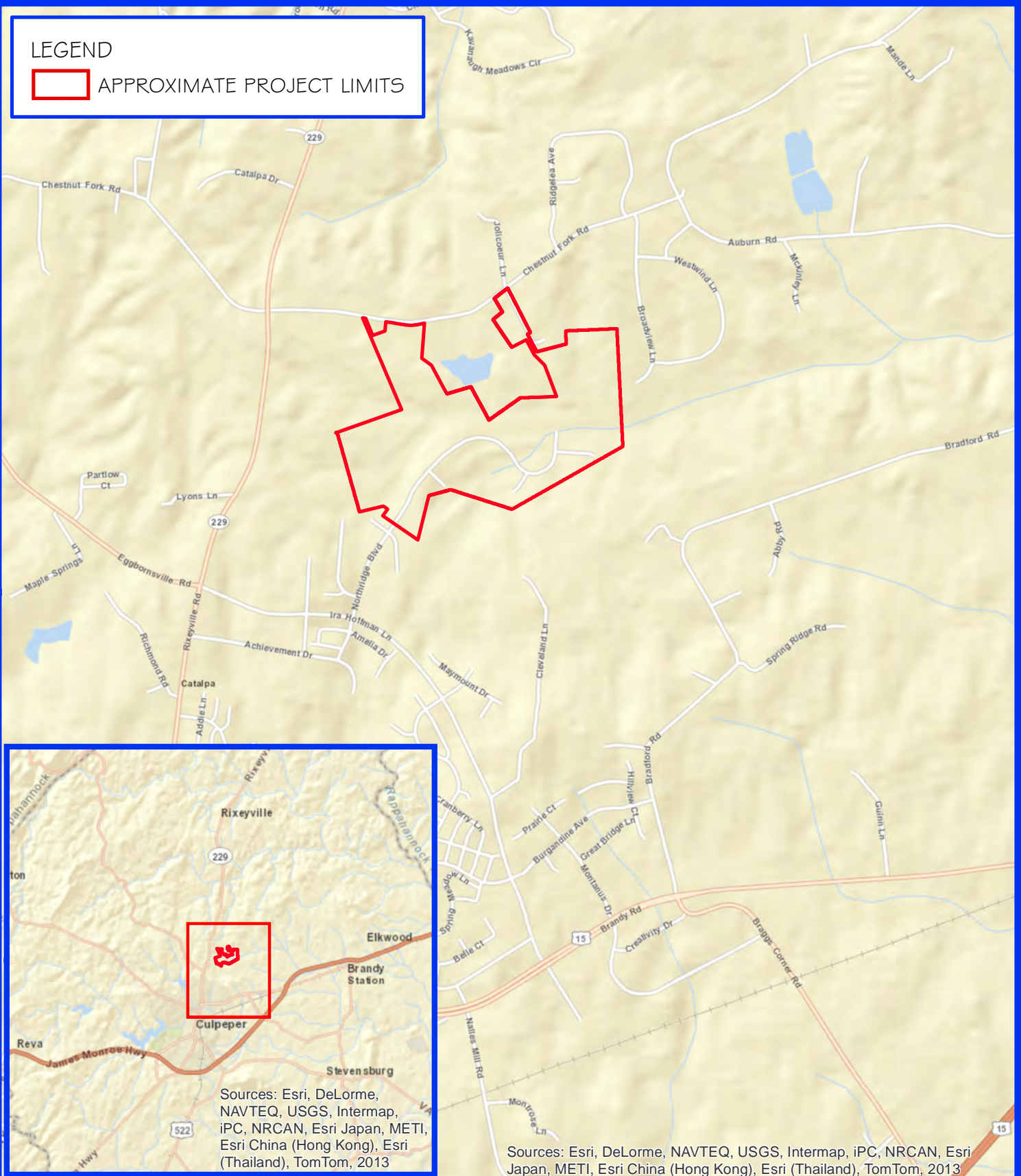


LEGEND

 APPROXIMATE PROJECT LIMITS



Sources: Esri, DeLorme, NAVTEQ, USGS, Intermap, iPC, NRCAN, Esri Japan, METI, Esri China (Hong Kong), Esri (Thailand), TomTom, 2013

Sources: Esri, DeLorme, NAVTEQ, USGS, Intermap, iPC, NRCAN, Esri Japan, METI, Esri China (Hong Kong), Esri (Thailand), TomTom, 2013



CORPORATE | 5367 TELEPHONE ROAD, WARRENTON, VIRGINIA 20187
P: 703.393.4844 | F: 703.393.2934

RICHMOND | 3751 WESTERRE PARKWAY SUITE A, RICHMOND, VIRGINIA 23233
P: 804.353.6017 | F: 804.353.6018

MARYLAND | 1434 ODENTON RD, ODENTON, MD 21113
P: 410.672.4326 | F: 410.672.4328

VICINITY MAP

NORTH RIDGE - PHASE II

CULPEPER COUNTY, VA

Street Map Source:

<http://resources.arcgis.com>



1 inch = 2,000 feet